

# SITE ANALYSIS

Enjoy a **network of connectivity** at your doorstep

The development is mainly oriented in a North-South direction to facilitate good ventilation and cross-wind.



All visuals shown are work-in-progress and cannot be construed as final.

# Site Plan

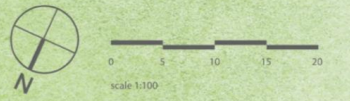
JALAN TEMBUSU

JALAN TEMBUSU

JALAN TEMBUSU

NEIGHBOURHOOD PARK

- ARRIVAL**
  - 1 Arrival Court (B1)
  - 2 Welcome Lounge (B1)
  - 3 Side Gate (B1)
  - 4 Terraced Garden
  - 5 Water Cascade
  - 6 Serenity Function Room
  - 7 Welcome Pavilion
  - 8 Garden Trellis
  - 9 Garden Alcove
  - 10 Social Lawn
  - 11 Garden Function Room
  - 12 Garden Lawn
- ACTIVE ZONE**
  - 13 Active Lawn
  - 14 Sun Deck
  - 15 Poolside Cabana
  - 16 Floating Deck
  - 17 Lap Pool (1.2m depth)
  - 18 Reflective Pond
- THE EMERALD CLUB**
  - 19 The Gymnasium
  - 20 The Emerald Room
  - 21 The Playroom
  - 22 Changing Room
  - 23 The Meeting Room (B1)
  - 24 The Collab Room (B1)
  - 25 The Games Room (B1)
  - 26 The Reading Room (B1)
- WELLNESS ZONE**
  - 27 Lounge Pavilion
  - 28 Relaxation Pool (0.8m depth)
  - 29 Dip Pool (0.5m depth)
  - 30 Healing Cove (0.8m depth)
  - 31 Spa Cove (0.1-0.5m depth)
  - 32 Vitality Pool (0.8m depth)
  - 33 Aqua Gym Pool (0.8m depth)
  - 34 Wellness Pavilion
  - 35 Wellness Alcove
  - 36 Relaxation Deck
  - 37 Spa Deck
- ADVENTURE ZONE**
  - 38 Palm Deck
  - 39 Tropical Wading Pool (0.3m depth)
  - 40 Beach Splash Pool (0.3m depth)
  - 41 Splash Cove (0.1m depth)
  - 42 Seaside Lawn
  - 43 Beach Lookout Play Zone
  - 44 Tropical Cabana
  - 45 The Beach Club
  - 46 Tropical Gourmet Pavilion
  - 47 Sunrise Gourmet Pavilion
  - 48 Washrooms
  - 49 Recreation Tennis Court (B1)
- LIFESTYLE ZONE**
  - 50 Spice Garden Courtyard
  - 51 Stargazing Lawn
  - 52 Garden Swing
  - 53 Fern Garden Courtyard
  - 54 Tranquil Lawn
  - 55 Foliage Alcove
  - 56 Reading Alcove
  - 57 Front Garden
- ANCILLARY**
  - A Ventilation Shaft
  - B Genset
  - C Guard House (B1)
  - D Bin Centre (B1)
  - E Substation (B1)
  - F Water Tank (Roof)
  - G Fire Engine Access
  - Water Tank



BUILDING PLAN APPROVAL NO : A1409-O2318-2023-BP01  
 BUILDING PLAN APPROVAL DATE : 27 September 2024  
 \*Neighbourhood Park is indicative and subject to relevant authorities' approval.

Artist's Impression

All visuals shown are work-in-progress and cannot be construed as final.



# 1 Bedroom + Study

## TYPE A1S

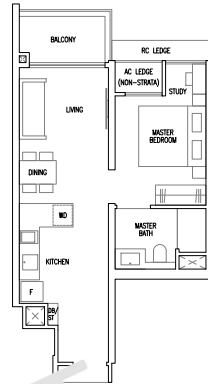
45 sqm / 484 sqft

Inclusive of 5 sqm Balcony

Blk 55 #02-22 to #21-22  
Blk 57 #02-30 to #21-30

### MIRROR UNIT

Blk 51 #02-01 to #21-01  
Blk 63 #03-35 to #21-35

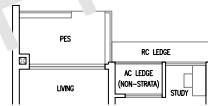


## TYPE A1S(p)

45 sqm / 484 sqft

Inclusive of 5 sqm PES

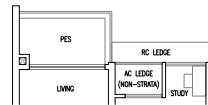
Blk 57 #01-30



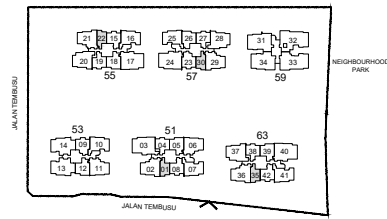
Blk 55 #01-22

### MIRROR UNIT

Blk 51 #01-01



- F : Fridge
- WD : Washer Cum Dryer
- DB/ST : Distribution Board / Storage
- RC Ledge : Reinforced Concrete Ledge (Non-Strata)
- AC Ledge : Air-Conditioner Ledge (Non-Strata)



KEY PLAN (NOT TO SCALE)

Area includes balcony and Private Enclosed Space (PES) where applicable. All RC Ledges and AC Ledges are excluded from strata area and are non-load bearing. Some units are mirror images of the floor plans shown in the brochure. Orientations and facings will differ depending on the unit you are purchasing, please refer to the key plan. The above plans and illustrations are subject to changes as may be required or approved by the relevant authorities and do not form part of any offer or contract. Areas are estimates only and are subject to final survey. The balcony & PES shall not be enclosed unless with the approved balcony screen. For an illustration of the approved balcony screen, please refer to Annex A of this brochure.

# 2 Bedroom Premium

## TYPE B1P

58 sqm / 624 sqft

Inclusive of 5 sqm Balcony

Blk 51 #02-04 to #21-04  
Blk 63 #03-38 to #21-38

### MIRROR UNIT

Blk 55 #02-19 to #21-19  
Blk 57 #02-27 to #21-27



## TYPE B1P(p)

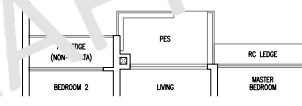
58 sqm / 624 sqft

Inclusive of 5 sqm PES

Blk 51 #01-04

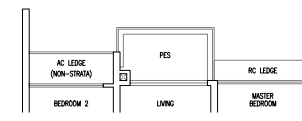
### MIRROR UNIT

Blk 55 #01-19

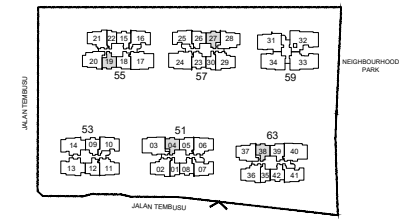


### MIRROR UNIT

Blk 57 #01-27



- F : Fridge
- WD : Washer Cum Dryer
- DB/ST : Distribution Board / Storage
- RC Ledge : Reinforced Concrete Ledge (Non-Strata)
- AC Ledge : Air-Conditioner Ledge (Non-Strata)



KEY PLAN (NOT TO SCALE)

Area includes balcony and Private Enclosed Space (PES) where applicable. All RC Ledges and AC Ledges are excluded from strata area and are non-load bearing. Some units are mirror images of the floor plans shown in the brochure. Orientations and facings will differ depending on the unit you are purchasing, please refer to the key plan. The above plans and illustrations are subject to changes as may be required or approved by the relevant authorities and do not form part of any offer or contract. Areas are estimates only and are subject to final survey. The balcony & PES shall not be enclosed unless with the approved balcony screen. For an illustration of the approved balcony screen, please refer to Annex A of this brochure.

## 2 Bedroom Premium

### TYPE B2P

60 sqm / 646 sqft

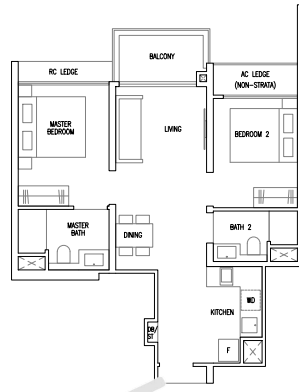
Inclusive of 5 sqm Balcony

Blk 55#02-15 to #21-15

#### MIRROR UNIT

Blk 51#02-08 to #21-08

Blk 63#02-42 to #21-42



### TYPE B2P(p)

60 sqm / 646 sqft

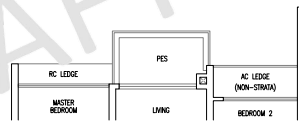
Inclusive of 5 sqm PES

Blk 55#01-15

#### MIRROR UNIT

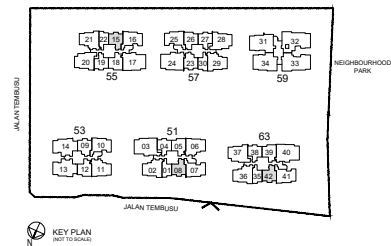
Blk 51#01-08

Blk 63#01-42



F : Fridge  
 WD : Washer Cum Dryer  
 DB/ST : Distribution Board / Storage  
 RC Ledge : Reinforced Concrete Ledge (Non-Strata)  
 AC Ledge : Air-Conditioner Ledge (Non-Strata)

0m 2.0m 5.0m



KEY PLAN  
 (NOT TO SCALE)

Area includes balcony and Private Enclosed Space (PES) where applicable. All RC Ledges and AC Ledges are excluded from strata area and are non-load bearing. Some units are mirror images of the floor plans shown in the brochure. Orientations and facings will differ depending on the unit you are purchasing, please refer to the key plan. The above plans and illustrations are subject to changes as may be required or approved by the relevant authorities and do not form part of any offer or contract. Areas are estimates only and are subject to final survey. The balcony & PES shall not be enclosed unless with the approved balcony screen. For an illustration of the approved balcony screen, please refer to Annex A of this brochure.

## 2 Bedroom + Study

### TYPE B3S

63 sqm / 678 sqft

Inclusive of 5 sqm Balcony

Blk 53#02-09 to #19-09

Blk 57#02-23 to #21-23



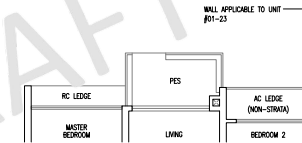
### TYPE B3S(p)

63 sqm / 678 sqft

Inclusive of 5 sqm PES

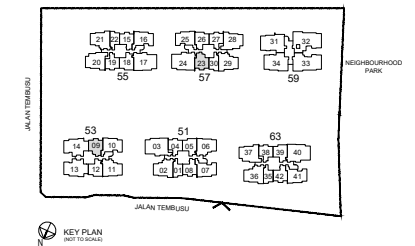
Blk 53#01-09

Blk 57#01-23



F : Fridge  
 WD : Washer Cum Dryer  
 DB/ST : Distribution Board / Storage  
 RC Ledge : Reinforced Concrete Ledge (Non-Strata)  
 AC Ledge : Air-Conditioner Ledge (Non-Strata)

0m 2.0m 5.0m



KEY PLAN  
 (NOT TO SCALE)

Area includes balcony and Private Enclosed Space (PES) where applicable. All RC Ledges and AC Ledges are excluded from strata area and are non-load bearing. Some units are mirror images of the floor plans shown in the brochure. Orientations and facings will differ depending on the unit you are purchasing, please refer to the key plan. The above plans and illustrations are subject to changes as may be required or approved by the relevant authorities and do not form part of any offer or contract. Areas are estimates only and are subject to final survey. The balcony & PES shall not be enclosed unless with the approved balcony screen. For an illustration of the approved balcony screen, please refer to Annex A of this brochure.

## 2 Bedroom + Study

### TYPE B4S

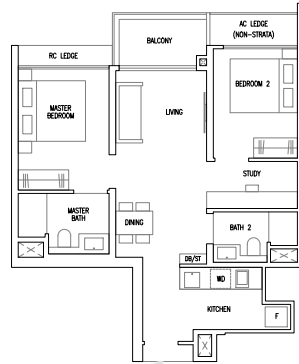
64 sqm / 689 sqft

Inclusive of 5 sqm Balcony

Blk 51 #02-05 to #21-05  
Blk 63 #02-39 to #21-39

#### MIRROR UNIT

Blk 53 #02-12 to #19-12  
Blk 55 #02-18 to #21-18



### TYPE B4S(p)

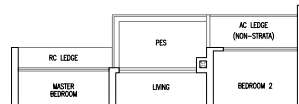
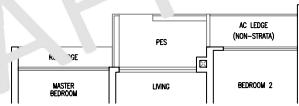
64 sqm / 689 sqft

Inclusive of 5 sqm PES

Blk 51 #01-05  
Blk 63 #01-39

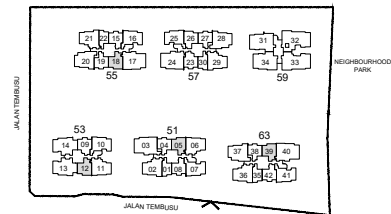
#### MIRROR UNIT

Blk 55 #01-18



F : Fridge  
WD : Washer Cum Dryer  
DB/ST : Distribution Board / Storage  
RC Ledge : Reinforced Concrete Ledge (Non-Strata)  
AC Ledge : Air-Conditioner Ledge (Non-Strata)

0m 2.0m 5.0m



KEY PLAN  
(NOT TO SCALE)

Area includes balcony and Private Enclosed Space (PES) where applicable. All RC Ledges and AC Ledges are excluded from strata area and are non-load bearing. Some units are mirror images of the floor plans shown in the brochure. Orientations and facings will differ depending on the unit you are purchasing, please refer to the key plan. The above plans and illustrations are subject to changes as may be required or approved by the relevant authorities and do not form part of any offer or contract. Areas are estimates only and are subject to final survey. The balcony & PES shall not be enclosed unless with the approved balcony screen. For an illustration of the approved balcony screen, please refer to Annex A of this brochure.

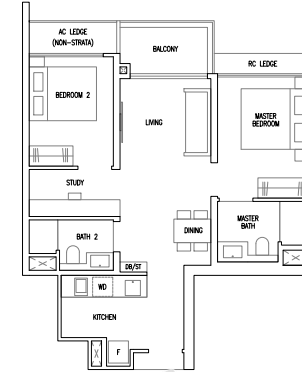
## 2 Bedroom + Study

### TYPE B5S

65 sqm / 700 sqft

Inclusive of 5 sqm Balcony

Blk #02-26 to #21-26

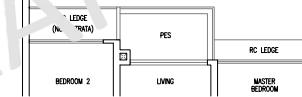


### TYPE B5S(p)

65 sqm / 700 sqft

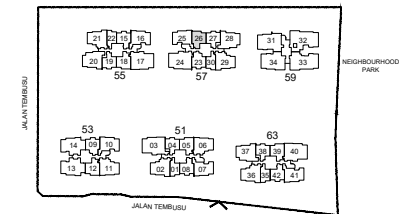
Inclusive of 5 sqm PES

Blk #01-26



F : Fridge  
WD : Washer Cum Dryer  
DB/ST : Distribution Board / Storage  
RC Ledge : Reinforced Concrete Ledge (Non-Strata)  
AC Ledge : Air-Conditioner Ledge (Non-Strata)

0m 2.0m 5.0m



KEY PLAN  
(NOT TO SCALE)

Area includes balcony and Private Enclosed Space (PES) where applicable. All RC Ledges and AC Ledges are excluded from strata area and are non-load bearing. Some units are mirror images of the floor plans shown in the brochure. Orientations and facings will differ depending on the unit you are purchasing, please refer to the key plan. The above plans and illustrations are subject to changes as may be required or approved by the relevant authorities and do not form part of any offer or contract. Areas are estimates only and are subject to final survey. The balcony & PES shall not be enclosed unless with the approved balcony screen. For an illustration of the approved balcony screen, please refer to Annex A of this brochure.

### 3 Bedroom

#### TYPE C1

82 sqm / 883 sqft  
Inclusive of 6 sqm Balcony

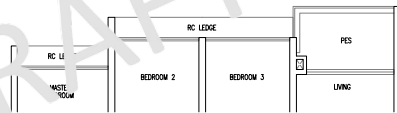
Blk 57 #02-25 to #21-25



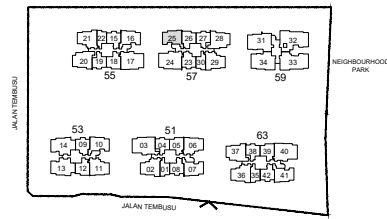
#### TYPE C1(p)

82 sqm / 883 sqft  
Inclusive of 6 sqm PES

Blk 57 #01-25



- F : Fridge
- WD : Washer Cum Dryer
- DB/ST : Distribution Board / Storage
- RC Ledge : Reinforced Concrete Ledge (Non-Strata)
- AC Ledge : Air-Conditioner Ledge (Non-Strata)



KEY PLAN  
(NOT TO SCALE)

Area includes balcony and Private Enclosed Space (PES) where applicable. All RC Ledges and AC Ledges are excluded from strata area and are non-load bearing. Some units are mirror images of the floor plans shown in the brochure. Orientations and facings will differ depending on the unit you are purchasing, please refer to the key plan. The above plans and illustrations are subject to changes as may be required or approved by the relevant authorities and do not form part of any offer or contract. Areas are estimates only and are subject to final survey. The balcony & PES shall not be enclosed unless with the approved balcony screen. For an illustration of the approved balcony screen, please refer to Annex A of this brochure.

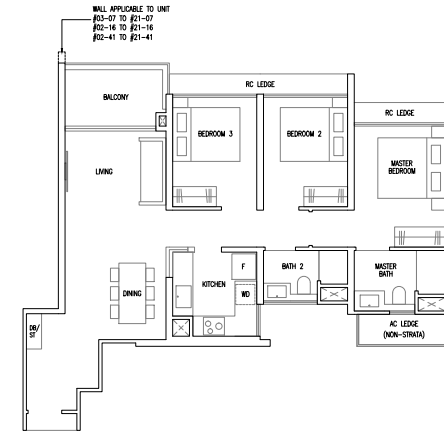
### 3 Bedroom

#### TYPE C2

84 sqm / 904 sqft  
Inclusive of 6 sqm Balcony

Blk 53 #02-10 to #19-10  
Blk 55 #02-16 to #21-16

MIRROR UNIT  
Blk 51 #03-07 to #21-07  
Blk 63 #02-41 to #21-41



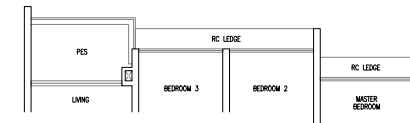
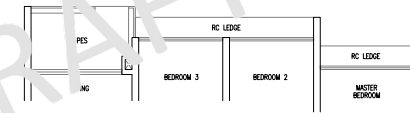
#### TYPE C2(p)

84 sqm / 904 sqft  
Inclusive of 6 sqm PES

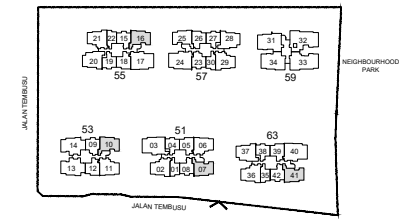
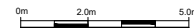
Blk 53 #01-10

Blk 55 #01-16

MIRROR UNIT  
Blk 63 #01-41



- F : Fridge
- WD : Washer Cum Dryer
- DB/ST : Distribution Board / Storage
- RC Ledge : Reinforced Concrete Ledge (Non-Strata)
- AC Ledge : Air-Conditioner Ledge (Non-Strata)



KEY PLAN  
(NOT TO SCALE)

Area includes balcony and Private Enclosed Space (PES) where applicable. All RC Ledges and AC Ledges are excluded from strata area and are non-load bearing. Some units are mirror images of the floor plans shown in the brochure. Orientations and facings will differ depending on the unit you are purchasing, please refer to the key plan. The above plans and illustrations are subject to changes as may be required or approved by the relevant authorities and do not form part of any offer or contract. Areas are estimates only and are subject to final survey. The balcony & PES shall not be enclosed unless with the approved balcony screen. For an illustration of the approved balcony screen, please refer to Annex A of this brochure.

## 3 Bedroom + Study

### TYPE C3S

90 sqm / 969 sqft

Inclusive of 6 sqm Balcony

Blk 51 #03-06 to #21-06

MIRROR UNIT

Blk 53 #02-11 to #19-11



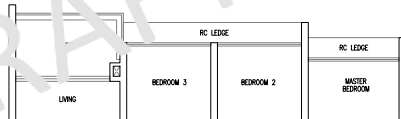
### TYPE C3S(p)

90 sqm / 969 sqft

Inclusive of 6 sqm PES

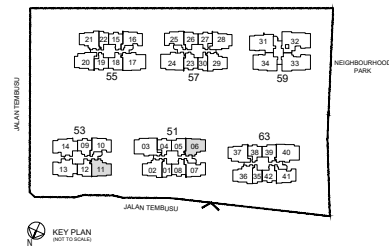
MIRROR UNIT

Blk 53 #01-11



F : Fridge  
 WD : Washer Cum Dryer  
 DB : Distribution Board  
 RC Ledge : Reinforced Concrete Ledge (Non-Strata)  
 AC Ledge : Air-Conditioner Ledge (Non-Strata)

0m 2.0m 5.0m



KEY PLAN  
 (NOT TO SCALE)

Area includes balcony and Private Enclosed Space (PES) where applicable. All RC Ledges and AC Ledges are excluded from strata area and are non-load bearing. Some units are mirror images of the floor plans shown in the brochure. Orientations and facings will differ depending on the unit you are purchasing, please refer to the key plan. The above plans and illustrations are subject to changes as may be required or approved by the relevant authorities and do not form part of any offer or contract. Areas are estimates only and are subject to final survey. The balcony & PES shall not be enclosed unless with the approved balcony screen. For an illustration of the approved balcony screen, please refer to Annex A of this brochure.

## 3 Bedroom + Study

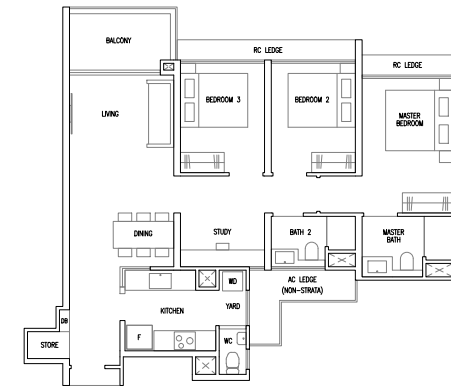
### TYPE C4S

92 sqm / 990 sqft

Inclusive of 6 sqm Balcony

Blk 51 #02-02 to #21-02

Blk 63 #03-36 to #21-36

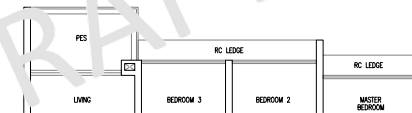


### TYPE C4S(p)

92 sqm / 990 sqft

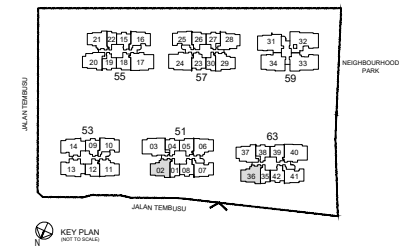
Inclusive of 6 sqm PES

Blk 51 #01-02



F : Fridge  
 WD : Washer Cum Dryer  
 DB : Distribution Board  
 RC Ledge : Reinforced Concrete Ledge (Non-Strata)  
 AC Ledge : Air-Conditioner Ledge (Non-Strata)

0m 2.0m 5.0m



KEY PLAN  
 (NOT TO SCALE)

Area includes balcony and Private Enclosed Space (PES) where applicable. All RC Ledges and AC Ledges are excluded from strata area and are non-load bearing. Some units are mirror images of the floor plans shown in the brochure. Orientations and facings will differ depending on the unit you are purchasing, please refer to the key plan. The above plans and illustrations are subject to changes as may be required or approved by the relevant authorities and do not form part of any offer or contract. Areas are estimates only and are subject to final survey. The balcony & PES shall not be enclosed unless with the approved balcony screen. For an illustration of the approved balcony screen, please refer to Annex A of this brochure.



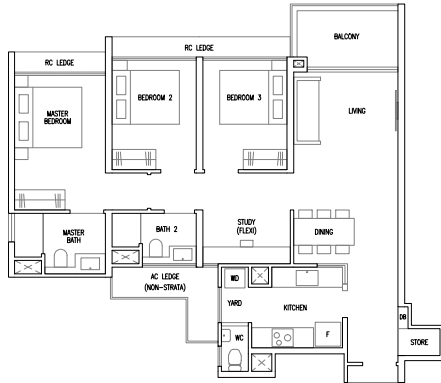
# 3 Bedroom Flexi

## TYPE C5F

92 sqm / 990 sqft

Inclusive of 6 sqm Balcony

Blk 55 #02-21 to #21-21  
Blk 57 #02-29 to #21-29

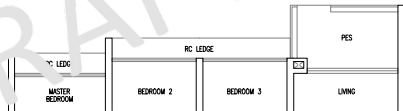


## TYPE C5F(p)

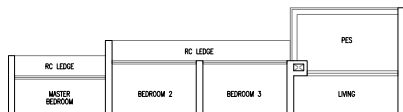
92 sqm / 990 sqft

Inclusive of 6 sqm PES

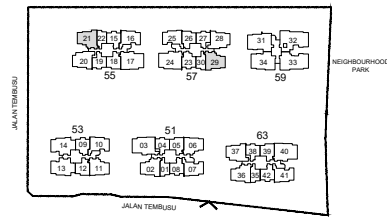
Blk 57 #01-29



Blk 55 #01-21



- F : Fridge
- WD : Washer Cum Dryer
- DB : Distribution Board
- RC Ledge : Reinforced Concrete Ledge (Non-Strata)
- AC Ledge : Air-Conditioner Ledge (Non-Strata)



KEY PLAN (NOT TO SCALE)

Area includes balcony and Private Enclosed Space (PES) where applicable. All RC Ledges and AC Ledges are excluded from strata area and are non-load bearing. Some units are mirror images of the floor plans shown in the brochure. Orientations and facings will differ depending on the unit you are purchasing, please refer to the key plan. The above plans and illustrations are subject to changes as may be required or approved by the relevant authorities and do not form part of any offer or contract. Areas are estimates only and are subject to final survey. The balcony & PES shall not be enclosed unless with the approved balcony screen. For an illustration of the approved balcony screen, please refer to Annex A of this brochure.

# 3 Bedroom + Study

## TYPE C6S

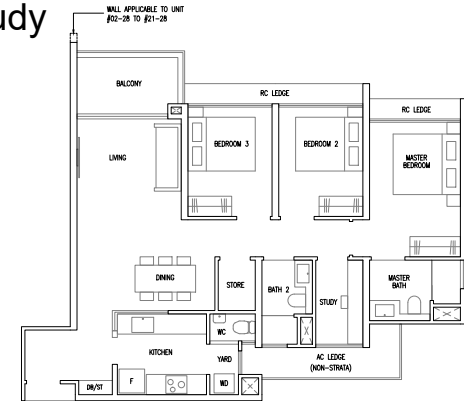
95 sqm / 1023 sqft

Inclusive of 6 sqm Balcony

Blk 55 #02-20 to #21-20  
Blk 57 #02-28 to #21-28

### MIRROR UNIT

Blk 63 #03-37 to #21-37

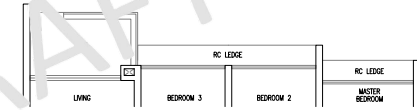


## TYPE C6S(p)

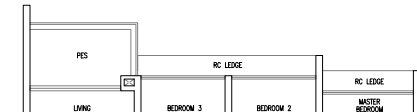
95 sqm / 1023 sqft

Inclusive of 6 sqm PES

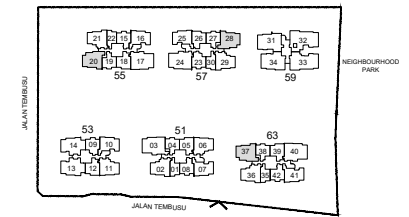
Blk 55 #01-20



Blk 57 #01-28



- F : Fridge
- WD : Washer Cum Dryer
- DB/ST : Distribution Board / Storage
- RC Ledge : Reinforced Concrete Ledge (Non-Strata)
- AC Ledge : Air-Conditioner Ledge (Non-Strata)



KEY PLAN (NOT TO SCALE)

Area includes balcony and Private Enclosed Space (PES) where applicable. All RC Ledges and AC Ledges are excluded from strata area and are non-load bearing. Some units are mirror images of the floor plans shown in the brochure. Orientations and facings will differ depending on the unit you are purchasing, please refer to the key plan. The above plans and illustrations are subject to changes as may be required or approved by the relevant authorities and do not form part of any offer or contract. Areas are estimates only and are subject to final survey. The balcony & PES shall not be enclosed unless with the approved balcony screen. For an illustration of the approved balcony screen, please refer to Annex A of this brochure.

## 4 Bedroom + Study

### TYPE D1S

107 sqm / 1152 sqft

Inclusive of 6 sqm Balcony

Blk 53#02-13 to #19-13



### TYPE D1S(p)

107 sqm / 1152 sqft

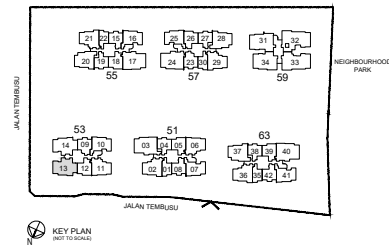
Inclusive of 6 sqm PES

Blk 53 #01-13



F : Fridge  
 WD : Washer Cum Dryer  
 DB : Distribution Board  
 RC Ledge : Reinforced Concrete Ledge (Non-Strata)  
 AC Ledge : Air-Conditioner Ledge (Non-Strata)

0m 2.0m 5.0m



Area includes balcony and Private Enclosed Space (PES) where applicable. All RC Ledges and AC Ledges are excluded from strata area and are non-load bearing. Some units are mirror images of the floor plans shown in the brochure. Orientations and facings will differ depending on the unit you are purchasing, please refer to the key plan. The above plans and illustrations are subject to changes as may be required or approved by the relevant authorities and do not form part of any offer or contract. Areas are estimates only and are subject to final survey. The balcony & PES shall not be enclosed unless with the approved balcony screen. For an illustration of the approved balcony screen, please refer to Annex A of this brochure.

## 4 Bedroom + Study

### TYPE D2S

107 sqm / 1152 sqft

Inclusive of 6 sqm Balcony

Blk 53#02-14 to #19-14



### TYPE D2S(p)

107 sqm / 1152 sqft

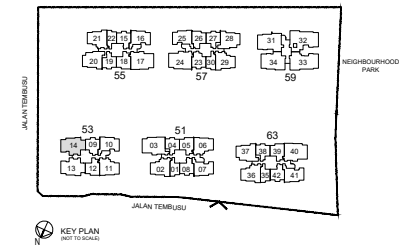
Inclusive of 6 sqm PES

Blk 53 #01-14



F : Fridge  
 WD : Washer Cum Dryer  
 DB : Distribution Board  
 RC Ledge : Reinforced Concrete Ledge (Non-Strata)  
 AC Ledge : Air-Conditioner Ledge (Non-Strata)

0m 2.0m 5.0m



Area includes balcony and Private Enclosed Space (PES) where applicable. All RC Ledges and AC Ledges are excluded from strata area and are non-load bearing. Some units are mirror images of the floor plans shown in the brochure. Orientations and facings will differ depending on the unit you are purchasing, please refer to the key plan. The above plans and illustrations are subject to changes as may be required or approved by the relevant authorities and do not form part of any offer or contract. Areas are estimates only and are subject to final survey. The balcony & PES shall not be enclosed unless with the approved balcony screen. For an illustration of the approved balcony screen, please refer to Annex A of this brochure.

# 4 Bedroom Premium

## TYPE D3P

117 sqm / 1259 sqft

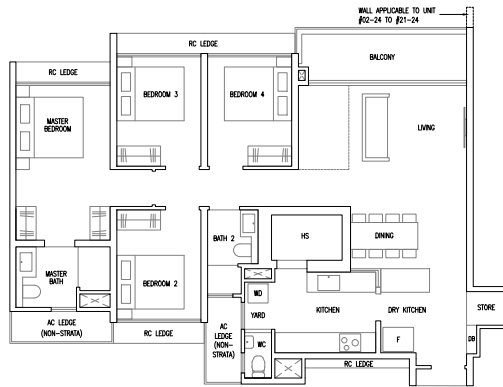
Inclusive of 8 sqm Balcony

Blk 55 #02-17 to #21-17

### MIRROR UNIT

Blk 57 #02-24 to #21-24

Blk 63 #02-40 to #21-40



## TYPE D3P(p)

117 sqm / 1259 sqft

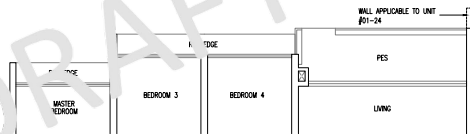
Inclusive of 8 sqm PES

Blk 55 #01-17

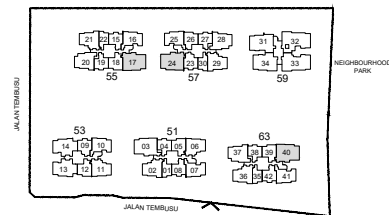
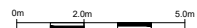
### MIRROR UNIT

Blk 57 #01-24

Blk 63 #01-40



- F : Fridge
- WD : Washer Cum Dryer
- HS : Household Shelter
- DB : Distribution Board
- RC Ledge : Reinforced Concrete Ledge (Non-Strata)
- AC Ledge : Air-Conditioner Ledge (Non-Strata)



KEY PLAN (NOT TO SCALE)

Area includes balcony and Private Enclosed Space (PES) where applicable. All RC Ledges and AC Ledges are excluded from strata area and are non-load bearing. Some units are mirror images of the floor plans shown in the brochure. Orientations and facings will differ depending on the unit you are purchasing, please refer to the key plan. The above plans and illustrations are subject to changes as may be required or approved by the relevant authorities and do not form part of any offer or contract. Areas are estimates only and are subject to final survey. The balcony & PES shall not be enclosed unless with the approved balcony screen. For an illustration of the approved balcony screen, please refer to Annex A of this brochure.

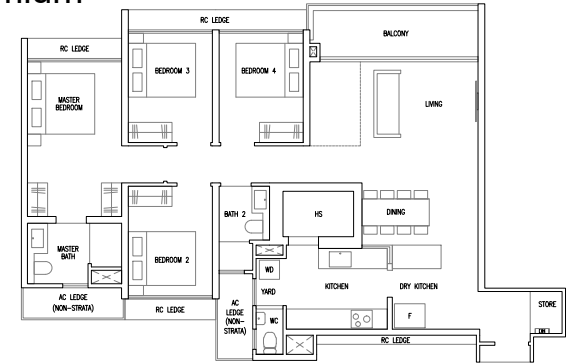
# 4 Bedroom Premium

## TYPE D4P

118 sqm / 1270 sqft

Inclusive of 8 sqm Balcony

Blk 51 #02-03 to #21-03

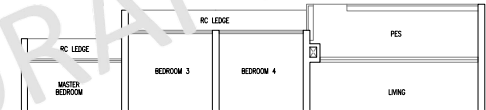


## TYPE D4P(p)

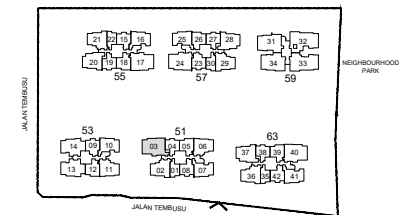
118 sqm / 1270 sqft

Inclusive of 8 sqm PES

Blk 51 #01-03



- F : Fridge
- WD : Washer Cum Dryer
- HS : Household Shelter
- DB : Distribution Board
- RC Ledge : Reinforced Concrete Ledge (Non-Strata)
- AC Ledge : Air-Conditioner Ledge (Non-Strata)



KEY PLAN (NOT TO SCALE)

Area includes balcony and Private Enclosed Space (PES) where applicable. All RC Ledges and AC Ledges are excluded from strata area and are non-load bearing. Some units are mirror images of the floor plans shown in the brochure. Orientations and facings will differ depending on the unit you are purchasing, please refer to the key plan. The above plans and illustrations are subject to changes as may be required or approved by the relevant authorities and do not form part of any offer or contract. Areas are estimates only and are subject to final survey. The balcony & PES shall not be enclosed unless with the approved balcony screen. For an illustration of the approved balcony screen, please refer to Annex A of this brochure.

## 4 Bedroom Luxe + Study

### TYPE D5LS

121 sqm / 1302 sqft  
Inclusive of 10 sqm Balcony

Blk 59 #02-34 to #17-34

### TYPE D5LS(H)

121 sqm / 1302 sqft  
Inclusive of 10 sqm Balcony

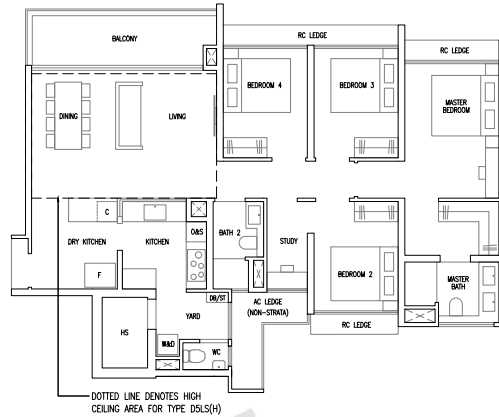
(High ceiling of 5 metres over living / dining)

Blk 59 #18-34

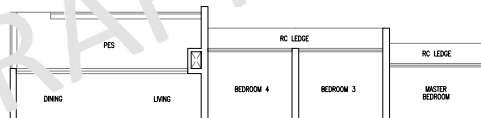
### TYPE D5LS(p)

121 sqm / 1302 sqft  
Inclusive of 10 sqm PES

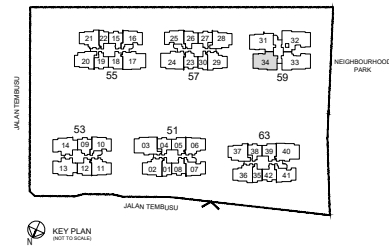
Blk 59 #01-34



..... DOTTED LINE DENOTES HIGH CEILING AREA FOR TYPE D5LS(H)



- F : Fridge
- W&D : Washer & Dryer
- O&S : Oven & Steamer
- C : Wine Chiller
- HS : Household Shelter
- DB/ST : Distribution Board / Storage
- RC Ledge : Reinforced Concrete Ledge (Non-Strata)
- AC Ledge : Air-Conditioner Ledge (Non-Strata)



KEY PLAN  
(NOT TO SCALE)

Area includes balcony and Private Enclosed Space (PES) where applicable. All RC Ledges and AC Ledges are excluded from strata area and are non-load bearing. Some units are mirror images of the floor plans shown in the brochure. Orientations and facings will differ depending on the unit you are purchasing, please refer to the key plan. The above plans and illustrations are subject to changes as may be required or approved by the relevant authorities and do not form part of any offer or contract. Areas are estimates only and are subject to final survey. The balcony & PES shall not be enclosed unless with the approved balcony screen. For an illustration of the approved balcony screen, please refer to Annex A of this brochure.

## 4 Bedroom Luxe + Study

### TYPE D6LS

122 sqm / 1313 sqft  
Inclusive of 10 sqm Balcony

Blk 59 #03-31 to #17-31

### TYPE D6LS(H)

122 sqm / 1313 sqft  
Inclusive of 10 sqm Balcony

(High ceiling of 5 metres over living / dining)

Blk 59 #18-31

### TYPE D6LS

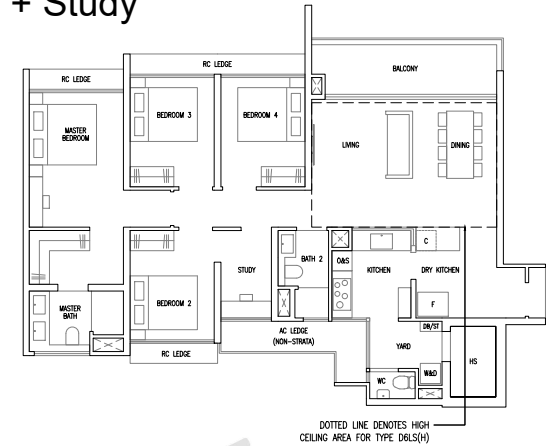
122 sqm / 1313 sqft  
Inclusive of 10 sqm Balcony

Blk 59 #02-31

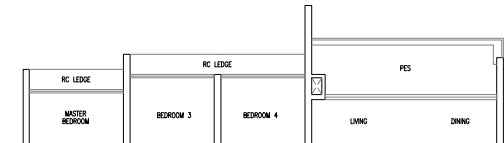
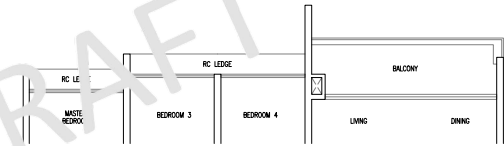
### TYPE D6LS(p)

122 sqm / 1313 sqft  
Inclusive of 10 sqm PES

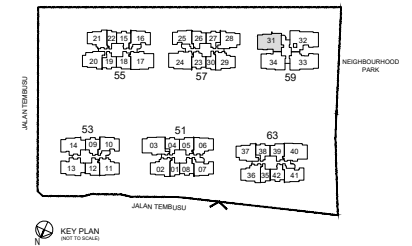
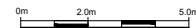
Blk 59 #01-31



..... DOTTED LINE DENOTES HIGH CEILING AREA FOR TYPE D6LS(H)



- F : Fridge
- W&D : Washer & Dryer
- O&S : Oven & Steamer
- C : Wine Chiller
- HS : Household Shelter
- DB/ST : Distribution Board / Storage
- RC Ledge : Reinforced Concrete Ledge (Non-Strata)
- AC Ledge : Air-Conditioner Ledge (Non-Strata)



KEY PLAN  
(NOT TO SCALE)

Area includes balcony and Private Enclosed Space (PES) where applicable. All RC Ledges and AC Ledges are excluded from strata area and are non-load bearing. Some units are mirror images of the floor plans shown in the brochure. Orientations and facings will differ depending on the unit you are purchasing, please refer to the key plan. The above plans and illustrations are subject to changes as may be required or approved by the relevant authorities and do not form part of any offer or contract. Areas are estimates only and are subject to final survey. The balcony & PES shall not be enclosed unless with the approved balcony screen. For an illustration of the approved balcony screen, please refer to Annex A of this brochure.

## 5 Bedroom Luxe

### TYPE E1L

137 sqm / 1475 sqft

Inclusive of 11 sqm Balcony

Blk 59 #02-33 to #17-33

### TYPE E1L(H)

137 sqm / 1475 sqft

Inclusive of 11 sqm Balcony

(High ceiling of 5 metres over living / dining)

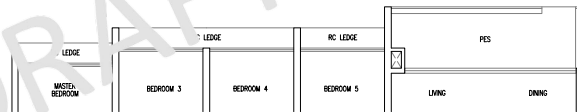
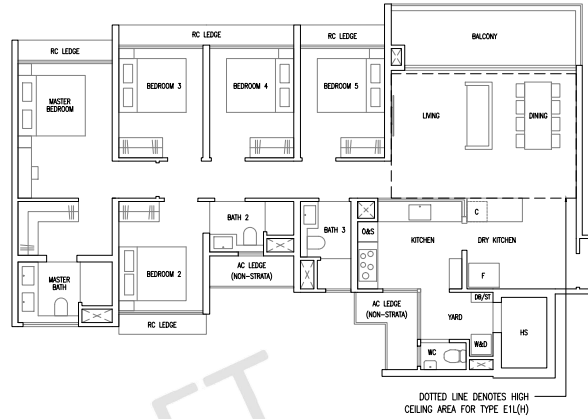
Blk 59 #18-33

### TYPE E1L(p)

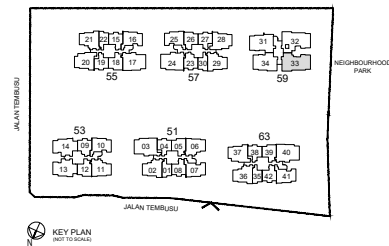
137 sqm / 1475 sqft

Inclusive of 11 sqm PES

Blk 59 #01-33



- F : Fridge
- W&D : Washer & Dryer
- O&S : Oven & Steamer
- C : Wine Chiller
- HS : Household Shelter
- DB/ST : Distribution Board / Storage
- RC Ledge : Reinforced Concrete Ledge (Non-Strata)
- AC Ledge : Air-Conditioner Ledge (Non-Strata)



Area includes balcony and Private Enclosed Space (PES) where applicable. All RC Ledges and AC Ledges are excluded from strata area and are non-load bearing. Some units are mirror images of the floor plans shown in the brochure. Orientations and facings will differ depending on the unit you are purchasing, please refer to the key plan. The above plans and illustrations are subject to changes as may be required or approved by the relevant authorities and do not form part of any offer or contract. Areas are estimates only and are subject to final survey. The balcony & PES shall not be enclosed unless with the approved balcony screen. For an illustration of the approved balcony screen, please refer to Annex A of this brochure.

## 5 Bedroom Luxe

### TYPE E2L(p)

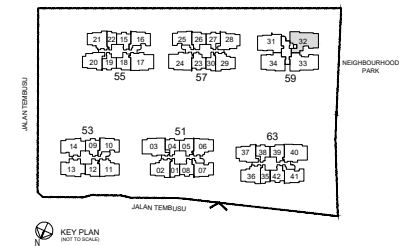
138 sqm / 1485 sqft

Inclusive of 11 sqm PES

Blk 59 #01-32



- F : Fridge
- W&D : Washer & Dryer
- O&S : Oven & Steamer
- C : Wine Chiller
- HS : Household Shelter
- DB/ST : Distribution Board / Storage
- RC Ledge : Reinforced Concrete Ledge (Non-Strata)
- AC Ledge : Air-Conditioner Ledge (Non-Strata)



Area includes balcony and Private Enclosed Space (PES) where applicable. All RC Ledges and AC Ledges are excluded from strata area and are non-load bearing. Some units are mirror images of the floor plans shown in the brochure. Orientations and facings will differ depending on the unit you are purchasing, please refer to the key plan. The above plans and illustrations are subject to changes as may be required or approved by the relevant authorities and do not form part of any offer or contract. Areas are estimates only and are subject to final survey. The balcony & PES shall not be enclosed unless with the approved balcony screen. For an illustration of the approved balcony screen, please refer to Annex A of this brochure.

# 5 Bedroom Luxe

## TYPE E3L

145 sqm / 1561 sqft

Inclusive of 11 sqm Balcony

Blk 59 #02-32 to #17-32

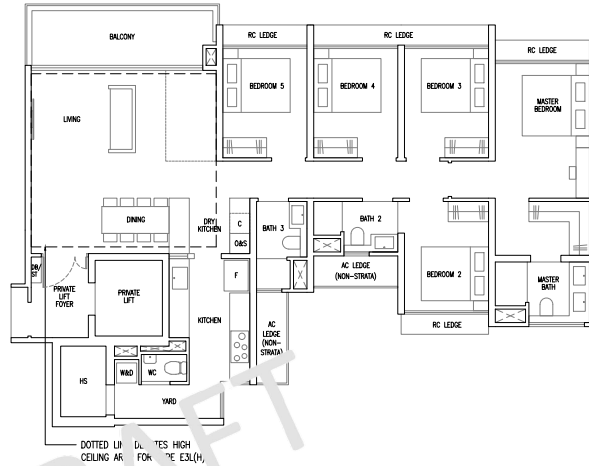
## TYPE E3L(H)

145 sqm / 1561 sqft

Inclusive of 11 sqm Balcony

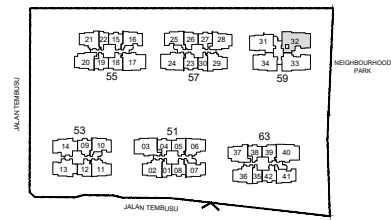
(High ceiling of 5 metres over living / dining)

Blk 59 #18-32



DRAFT

- F : Fridge
- W&D : Washer & Dryer
- O&S : Oven & Steamer
- C : Wine Chiller
- HS : Household Shelter
- DB/ST : Distribution Board / Storage
- RC Ledge : Reinforced Concrete Ledge (Non-Strata)
- AC Ledge : Air-Conditioner Ledge (Non-Strata)



KEY PLAN  
(NOT TO SCALE)

Area includes balcony and Private Enclosed Space (PES) where applicable. All RC Ledges and AC Ledges are excluded from strata area and are non-load bearing. Some units are mirror images of the floor plans shown in the brochure. Orientations and facings will differ depending on the unit you are purchasing, please refer to the key plan. The above plans and illustrations are subject to changes as may be required or approved by the relevant authorities and do not form part of any offer or contract. Areas are estimates only and are subject to final survey. The balcony & PES shall not be enclosed unless with the approved balcony screen. For an illustration of the approved balcony screen, please refer to Annex A of this brochure.