

TRANSPORT & CONNECTIVITY

MRT & BUS
 Beauty World MRT 2-min walk
 Integrated Transport Hub (U/C) 3-min walk

EXPRESSWAYS
 PIE 3-min drive
 BKE 5-min drive

EDUCATION
 Pei Hwa Presbyterian Pri Sch (within 1km) 7-min walk
 Bukit Timah Pri Sch 5-min drive
 Methodist Girls' Sch 1 MRT stop
 Ngee Ann Polytechnic 5-min drive
 SIM Global Education / Singapore University of Social Sciences 6-min drive
 National University of Singapore 9 MRT stops

SHOPPING & DINING
 Beauty World Plaza 2-min walk
 Cheong Chin Nam Food Alley 3-min walk
 Bukit Timah Shopping Centre 4-min walk
 Bukit Timah Plaza 10-min walk
 IMM / JEM / Westgate 13-min drive
 Holland Village 6 MRT stops
 Orchard Road 7 MRT stops
 Marina Bay Sands 11 MRT stops

BUSINESS
 Jurong Lake District 5 MRT stops
 one-north 8 MRT stops
 Science Park 9 MRT stops
 Marina Bay Financial Centre 12 MRT stops
 Central Business District 13 MRT stops

PARKS & RECREATION
 Future Bukit Timah Community Building 4-min walk
 Bukit Timah Nature Reserve 13-min walk
 Rifle Range Nature Park 15-min walk
 Singapore Botanic Gardens 4 MRT stops

LEGEND:

- North-South Line
- Cross Island Line (U/C)
- East-West Line
- Jurong Region Line (U/C)
- Circle Line
- Rail Corridor
- Downtown Line
- Future Bukit Timah-Rochor Green Corridor
- Thomson-East Coast Line
- Park Connector

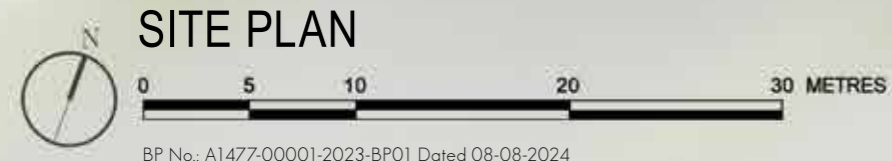


All travelling times are approximate only, subject to traffic conditions.

BUKIT TIMAH LINK

MAIN ENTRANCE

JALAN JURONG KECIL



SITE PLAN

BP No.: A1477-00001-2023-BP01 Dated 08-08-2024

LEGEND

BASEMENT 1

THE ARRIVAL

- 1 The Lobby
- 2 The Water Cascade

THE QUARRY

- 3 The Slide Pool
- 4 The Quarry Pool (25m)
- 5 The Deck
- 6 The Showers
- 7 The Furo Bath

THE CLUBHOUSE

- 8 The Living Room
- 9 The Meeting Room
- 10 The Fitness Room (1ST Storey)

1ST STOREY

THE RAINFOREST

- 11 The Fitness Pool
- 12 The Sunbathing Lawn
- 13 The Sensory Trail

THE CAMPSITE

- 14 The Playground
- 15 The BBQ Pavilion
- 16 The Camping Ground

OTHERS

- A Guardhouse (Basement 1)
- B Side Gate (Basement 1)
- C Electrical Substation (Basement 1)
- D Genset (Basement 2)
- E Bin Centre (Basement 1)
- F Water Tank (Roof)
- G Fire Engine Access Gate (1ST Storey)
- H Ventilation Shaft (Basement 1 & 1ST Storey)
- J Bulk Meter (Basement 1)
- K Short-Term Bicycle Park (Basement 1)
- L Bicycle Park (Basement 1)
- M Outdoor Shower (Basement 1 & 1ST Storey)
- N Loading / Unloading Bay (Basement 1)

SCHEMATIC DIAGRAM

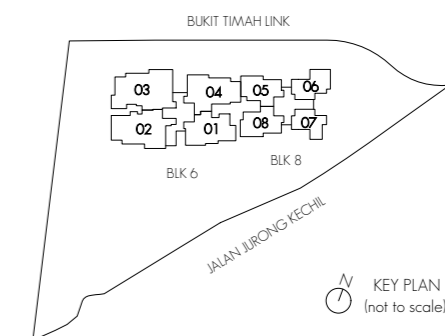
6 Bukit Timah Link Singapore 589943

| UNIT / FLOOR | 01 | 02 | 03 | 04 |
|--------------|-------|-------|-----|----|
| 20 | C1 | PH1 | PH2 | C3 |
| 19 | C1 | D1 | D2 | C3 |
| 18 | C1 | D1 | D2 | C3 |
| 17 | C1 | D1 | D2 | C3 |
| 16 | C1 | D1 | D2 | C3 |
| 15 | C1 | D1 | D2 | C3 |
| 14 | C1 | D1 | D2 | C3 |
| 13 | C1 | D1 | D2 | C3 |
| 12 | C1 | D1 | D2 | C3 |
| 11 | C1 | D1 | D2 | C3 |
| 10 | C1 | D1 | D2 | C3 |
| 9 | C1 | D1 | D2 | C3 |
| 8 | C1 | C4 | D2 | C2 |
| 7 | C1 | C4 | D2 | C2 |
| 6 | C1 | C4 | D2 | C2 |
| 5 | C1 | C4 | D2 | C2 |
| 4 | C1 | C4 | D2 | C2 |
| 3 | C1 | C4 | D2 | C2 |
| 2 | C1 | C4 | D2 | C2 |
| 1 | C1(p) | C4(p) | | |

8 Bukit Timah Link Singapore 589944

| UNIT / FLOOR | 05 | 06 | 07 | 08 |
|--------------|-------|-------|-------|-------|
| 20 | B2 | B1 | A1 | B3 |
| 19 | B2 | B1 | A1 | B3 |
| 18 | B2 | B1 | A1 | B3 |
| 17 | B2 | B1 | A1 | B3 |
| 16 | B2 | B1 | A1 | B3 |
| 15 | B2 | B1 | A1 | B3 |
| 14 | B2 | B1 | A1 | B3 |
| 13 | B2 | B1 | A1 | B3 |
| 12 | B2 | A2 | A1 | B3 |
| 11 | B2 | A2 | A1 | B3 |
| 10 | B2 | A2 | A1 | B3 |
| 9 | B2 | A2 | A1 | B3 |
| 8 | B2 | A2 | A1 | B3 |
| 7 | B2 | A2 | A1 | B3 |
| 6 | B2 | A2 | A1 | B3 |
| 5 | B2 | A2 | A1 | B3 |
| 4 | B2 | A2 | A1 | B3 |
| 3 | B2 | A2 | A1 | B3 |
| 2 | B2 | A2 | A1 | B3 |
| 1 | B2(p) | A2(p) | A1(p) | B3(p) |

LEGEND: 1-BEDROOM 2-BEDROOM 3-BEDROOM 4-BEDROOM PENTHOUSE

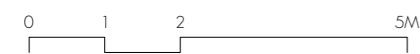
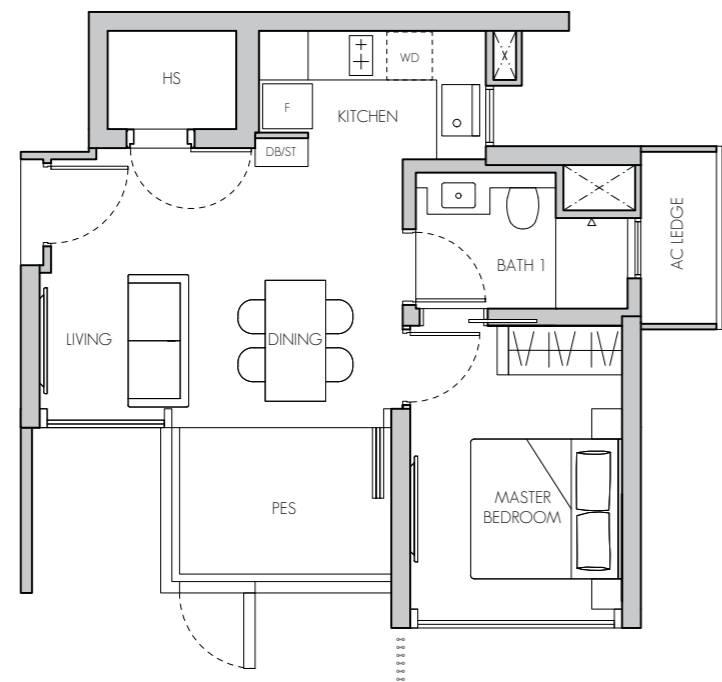


1-BEDROOM

TYPE A1(p)

55 sq m / 592 sq ft

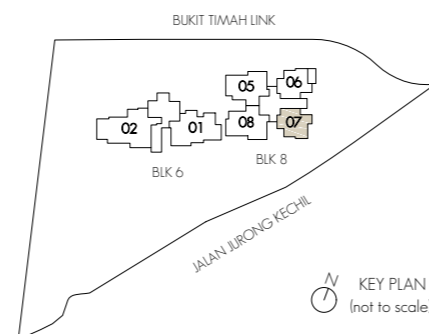
#01-07



LEGEND:

| | | | |
|-----|------------------------|----------|---|
| AC | AIR-CONDITIONER | ST | STORE |
| F | FRIDGE | DB | DISTRIBUTION BOARD |
| WD | WASHER CUM DRYER | HS | HOUSEHOLD SHELTER |
| O | OVEN (BELOW HOB) | RC LEDGE | REINFORCED CONCRETE (EXCLUDED FROM STRATA AREA) |
| PES | PRIVATE ENCLOSED SPACE | | VOID SPACE (EXCLUDED FROM STRATA AREA) |

Note:
Area includes air-con (AC) ledge, balcony and private enclosed space (PES) where applicable. The plans are subject to change as may be required or approved by the relevant authorities. All areas and measurements stated or depicted herein are approximate only and are subject to final survey. Please refer to key plan for orientation.

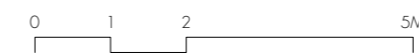
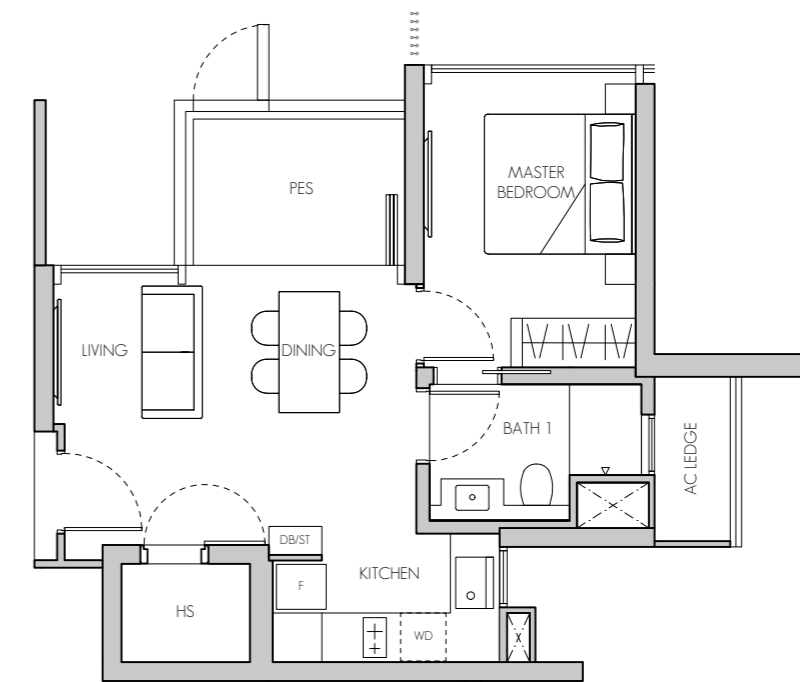


1-BEDROOM

TYPE A2(p)

55 sq m / 592 sq ft

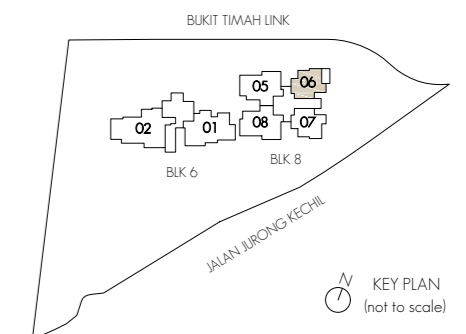
#01-06



LEGEND:

| | | | |
|-----|------------------------|----------|---|
| AC | AIR-CONDITIONER | ST | STORE |
| F | FRIDGE | DB | DISTRIBUTION BOARD |
| WD | WASHER CUM DRYER | HS | HOUSEHOLD SHELTER |
| O | OVEN (BELOW HOB) | RC LEDGE | REINFORCED CONCRETE (EXCLUDED FROM STRATA AREA) |
| PES | PRIVATE ENCLOSED SPACE | | VOID SPACE (EXCLUDED FROM STRATA AREA) |

Note:
Area includes air-con (AC) ledge, balcony and private enclosed space (PES) where applicable. The plans are subject to change as may be required or approved by the relevant authorities. All areas and measurements stated or depicted herein are approximate only and are subject to final survey. Please refer to key plan for orientation.

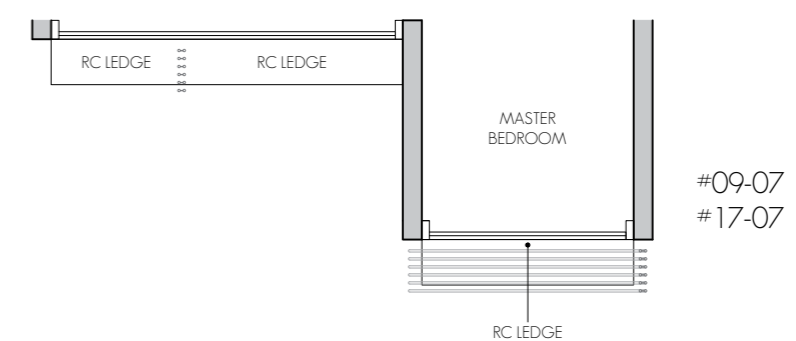
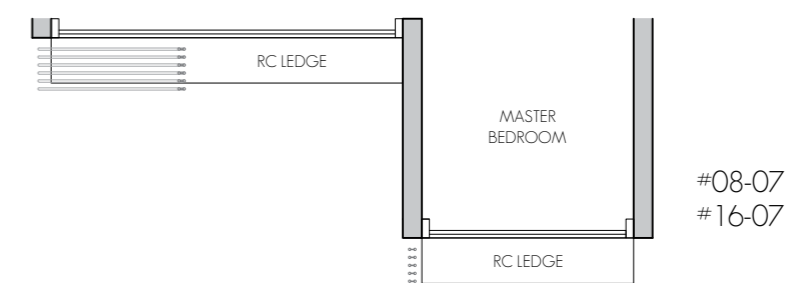
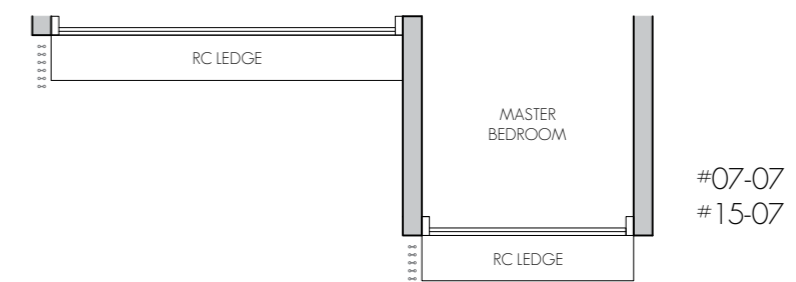
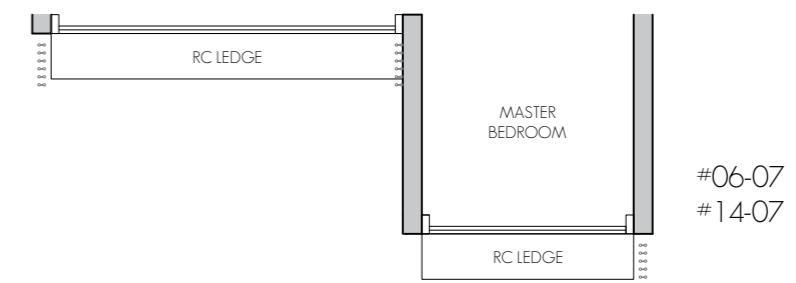
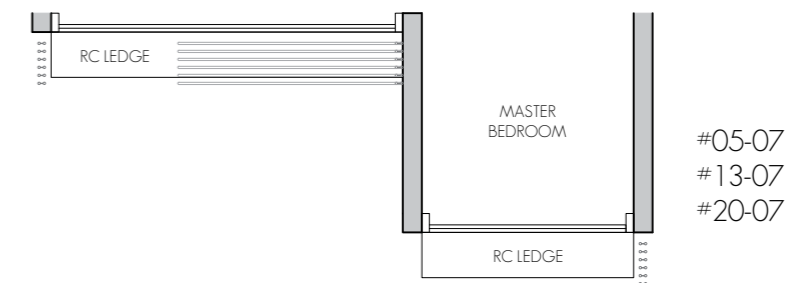
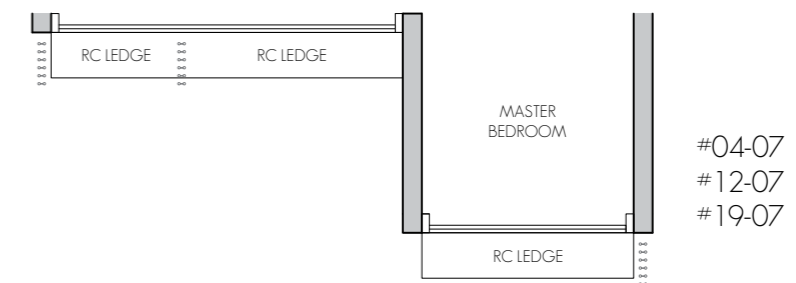
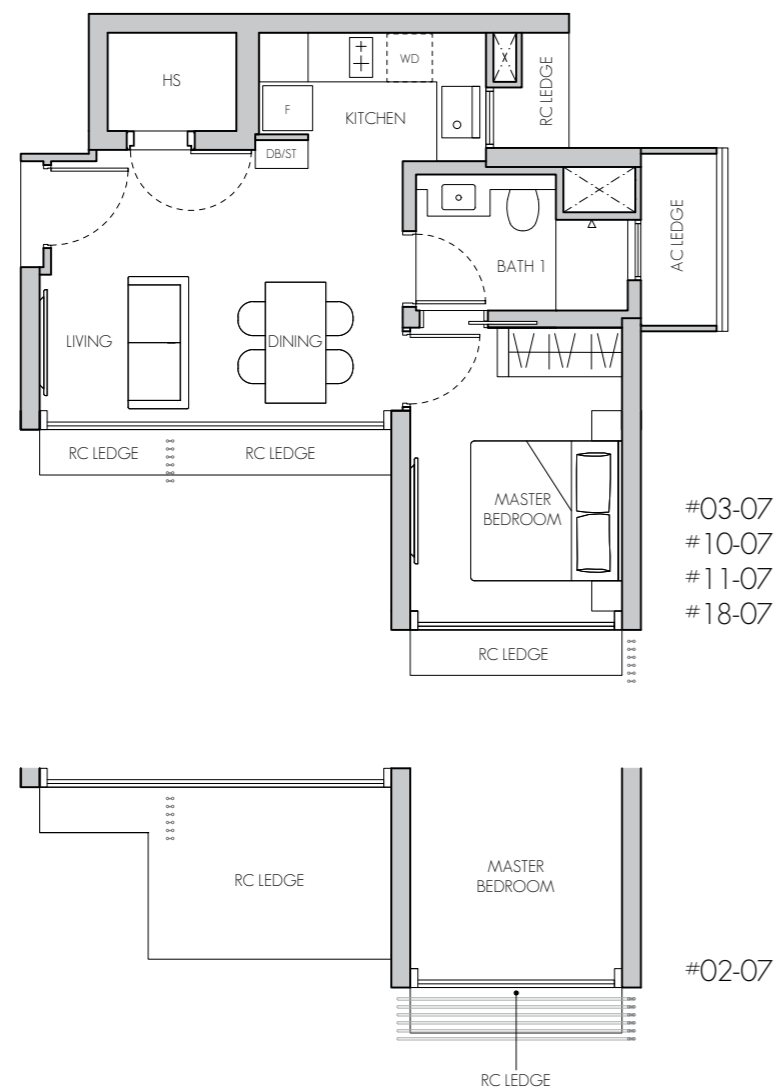


1-BEDROOM

TYPE A1

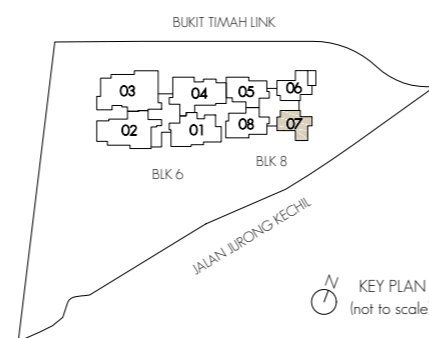
48 sq m / 517 sq ft

#02-07 - #20-07



LEGEND:

| | | | |
|----|------------------|----------|---|
| AC | AIR-CONDITIONER | ST | STORE |
| F | FRIDGE | DB | DISTRIBUTION BOARD |
| WD | WASHER CUM DRYER | HS | HOUSEHOLD SHELTER |
| O | OVEN (BELOW HOB) | RC LEDGE | REINFORCED CONCRETE (EXCLUDED FROM STRATA AREA) |
| | | | VOID SPACE (EXCLUDED FROM STRATA AREA) |



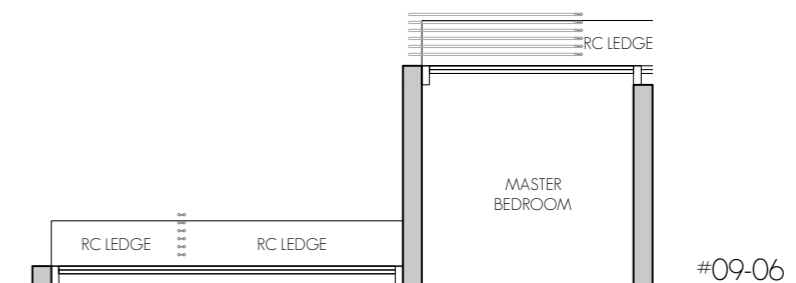
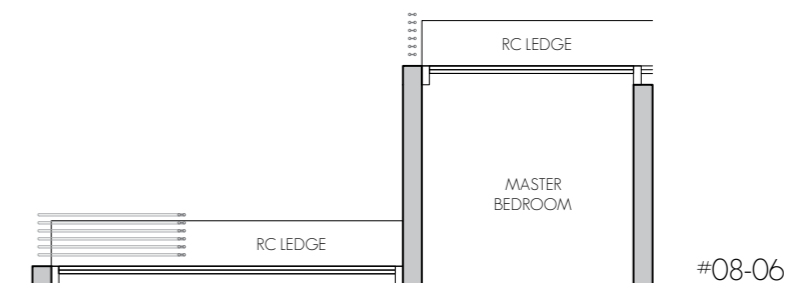
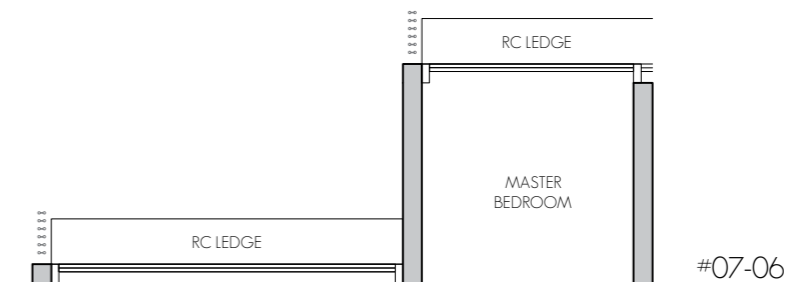
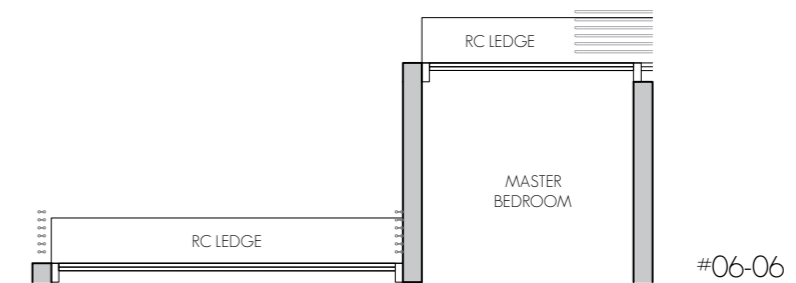
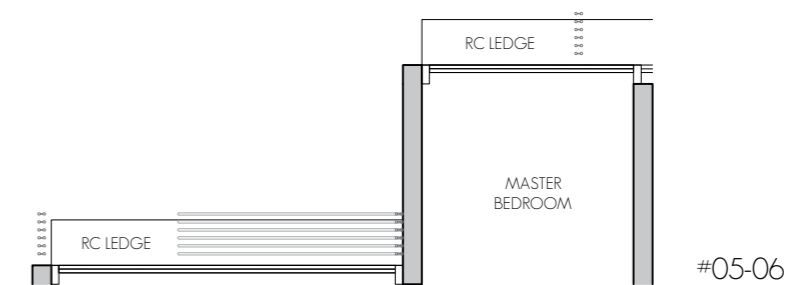
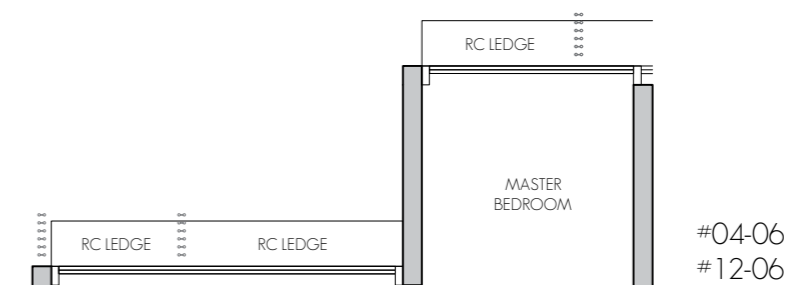
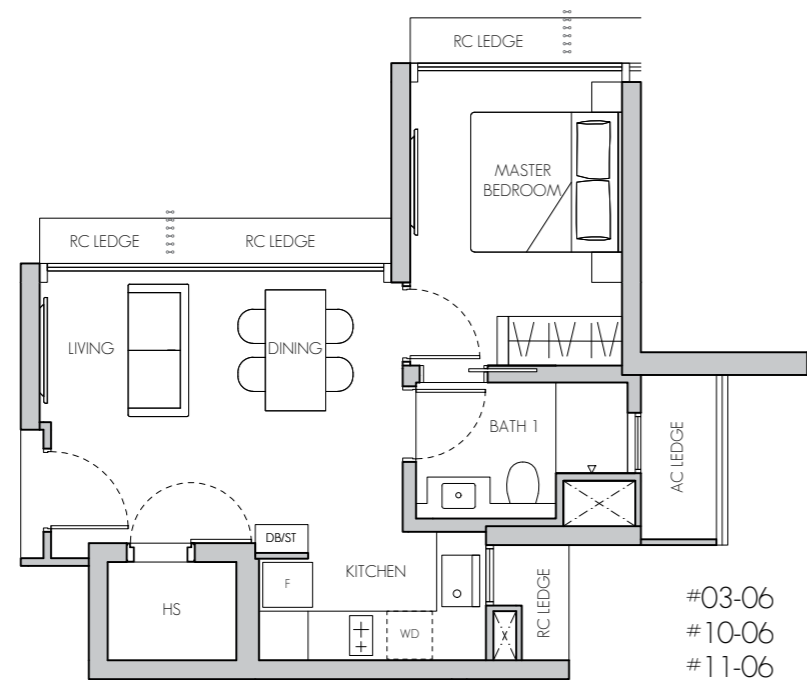
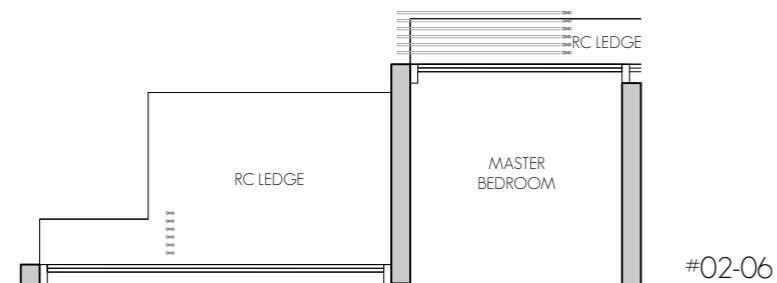
Note:
Area includes air-con (AC) ledge, balcony and private enclosed space (PES) where applicable. The plans are subject to change as may be required or approved by the relevant authorities. All areas and measurements stated or depicted herein are approximate only and are subject to final survey. Please refer to key plan for orientation.

1-BEDROOM

TYPE A2

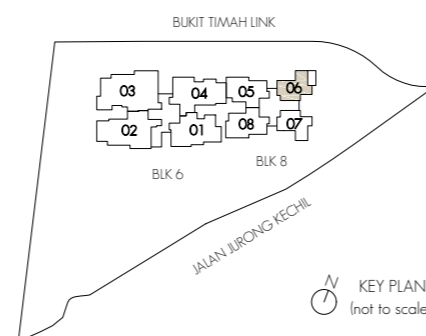
48 sq m / 517 sq ft

#02-06 - #12-06



LEGEND:

| | | | |
|----|------------------|----------|---|
| AC | AIR-CONDITIONER | ST | STORE |
| F | FRIDGE | DB | DISTRIBUTION BOARD |
| WD | WASHER CUM DRYER | HS | HOUSEHOLD SHELTER |
| O | OVEN (BELOW HOB) | RC LEDGE | REINFORCED CONCRETE (EXCLUDED FROM STRATA AREA) |
| | | | VOID SPACE (EXCLUDED FROM STRATA AREA) |



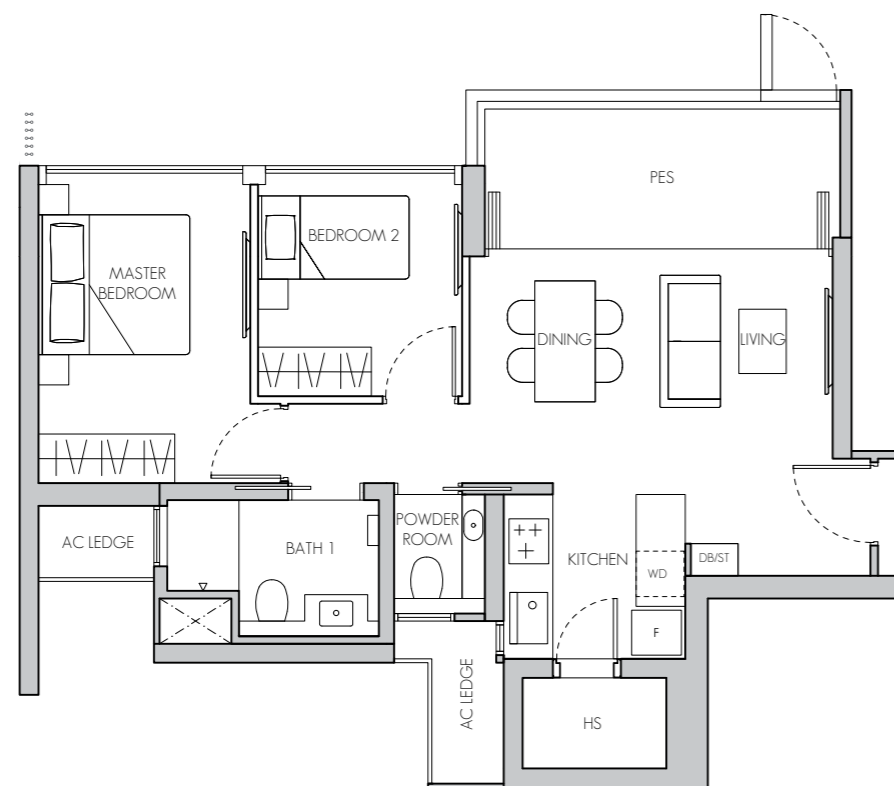
Note:
Area includes air-con (AC) ledge, balcony and private enclosed space (PES) where applicable. The plans are subject to change as may be required or approved by the relevant authorities. All areas and measurements stated or depicted herein are approximate only and are subject to final survey. Please refer to key plan for orientation.

2-BEDROOM

TYPE B2(p)

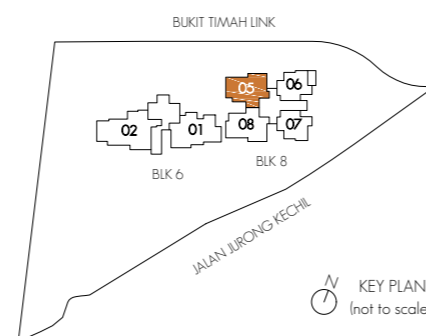
77 sq m / 829 sq ft

#01-05



| | | | |
|---------|------------------------|----------|---|
| LEGEND: | | ST | STORE |
| AC | AIR-CONDITIONER | DB | DISTRIBUTION BOARD |
| F | FRIDGE | HS | HOUSEHOLD SHELTER |
| WD | WASHER CUM DRYER | RC LEDGE | REINFORCED CONCRETE (EXCLUDED FROM STRATA AREA) |
| O | OVEN (BELOW HOB) | | VOID SPACE (EXCLUDED FROM STRATA AREA) |
| PES | PRIVATE ENCLOSED SPACE | | |

Note:
Area includes air-con (AC) ledge, balcony and private enclosed space (PES) where applicable. The plans are subject to change as may be required or approved by the relevant authorities. All areas and measurements stated or depicted herein are approximate only and are subject to final survey. Please refer to key plan for orientation.

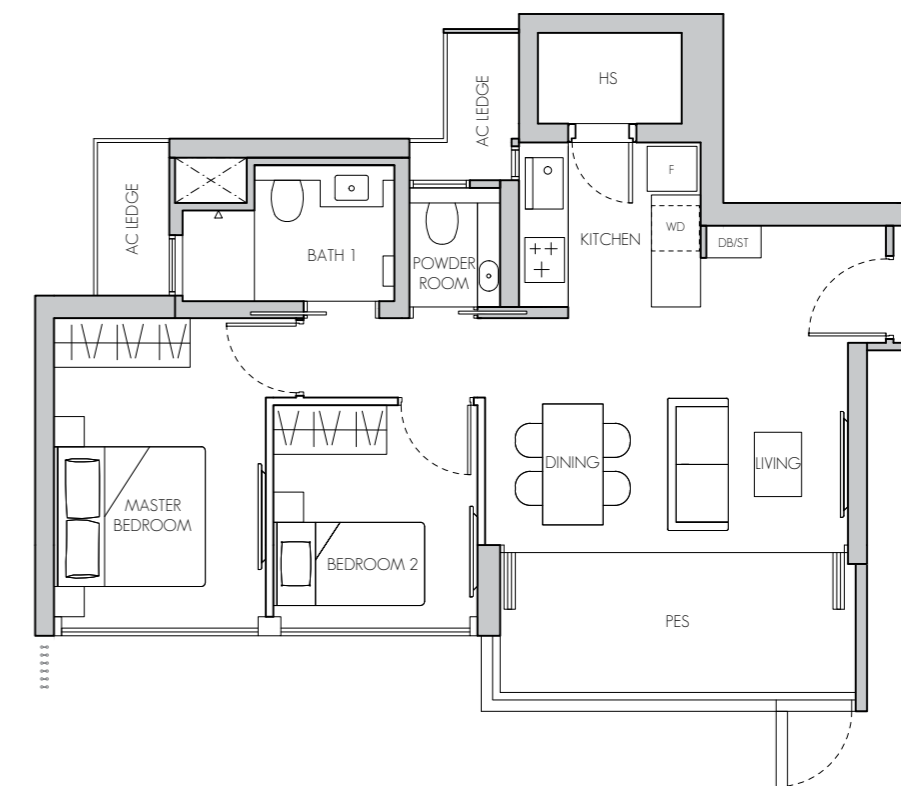


2-BEDROOM

TYPE B3(p)

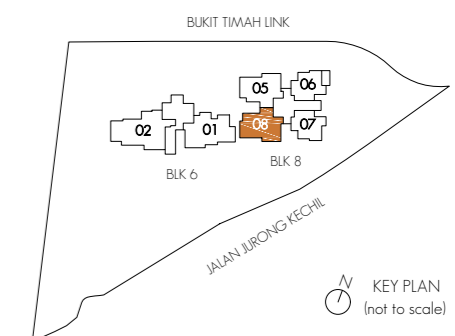
77 sq m / 829 sq ft

#01-08



| | | | |
|---------|------------------------|----------|---|
| LEGEND: | | ST | STORE |
| AC | AIR-CONDITIONER | DB | DISTRIBUTION BOARD |
| F | FRIDGE | HS | HOUSEHOLD SHELTER |
| WD | WASHER CUM DRYER | RC LEDGE | REINFORCED CONCRETE (EXCLUDED FROM STRATA AREA) |
| O | OVEN (BELOW HOB) | | VOID SPACE (EXCLUDED FROM STRATA AREA) |
| PES | PRIVATE ENCLOSED SPACE | | |

Note:
Area includes air-con (AC) ledge, balcony and private enclosed space (PES) where applicable. The plans are subject to change as may be required or approved by the relevant authorities. All areas and measurements stated or depicted herein are approximate only and are subject to final survey. Please refer to key plan for orientation.

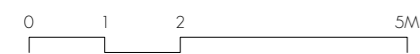
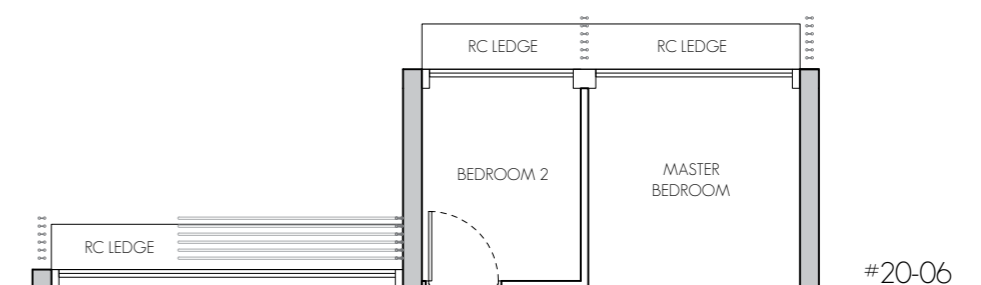
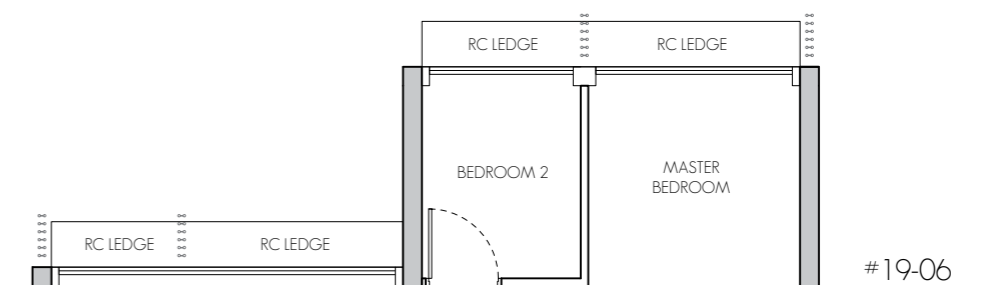
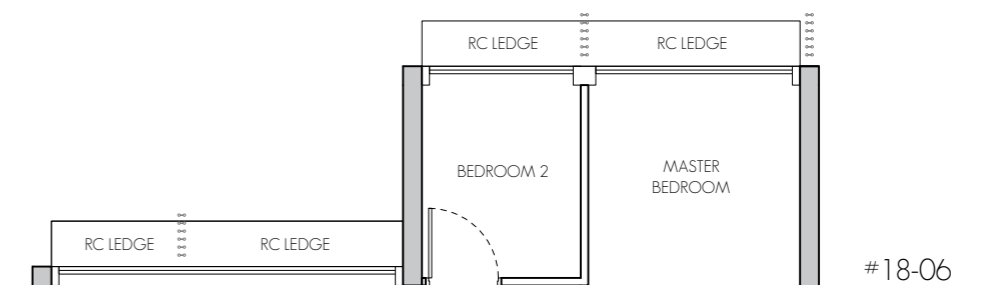
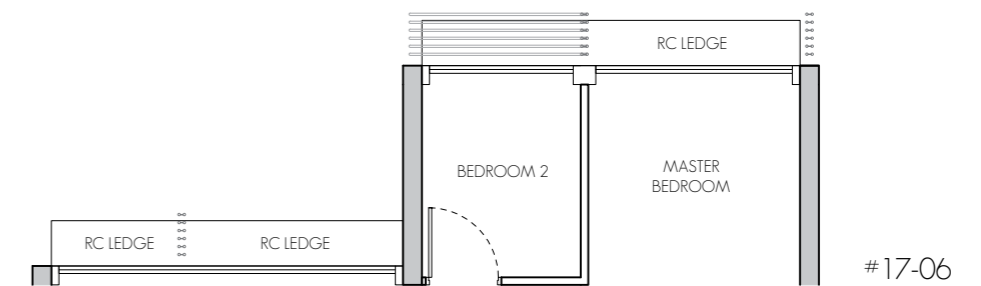
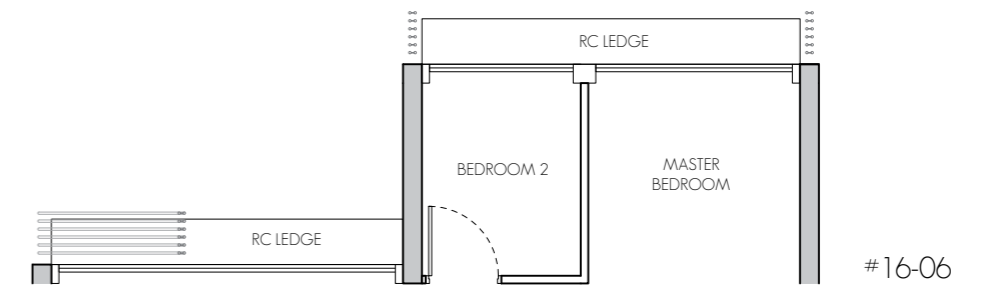
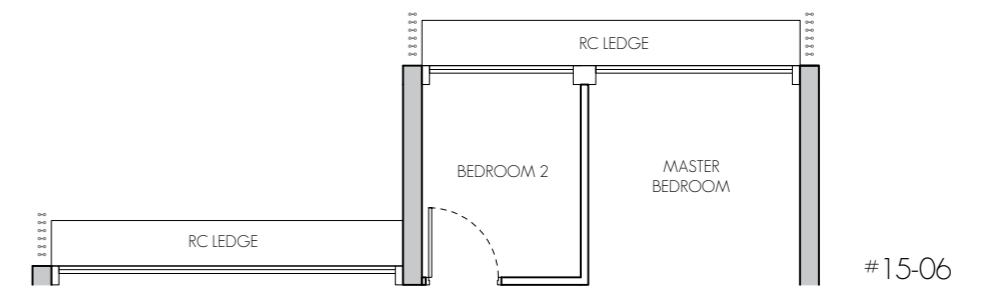
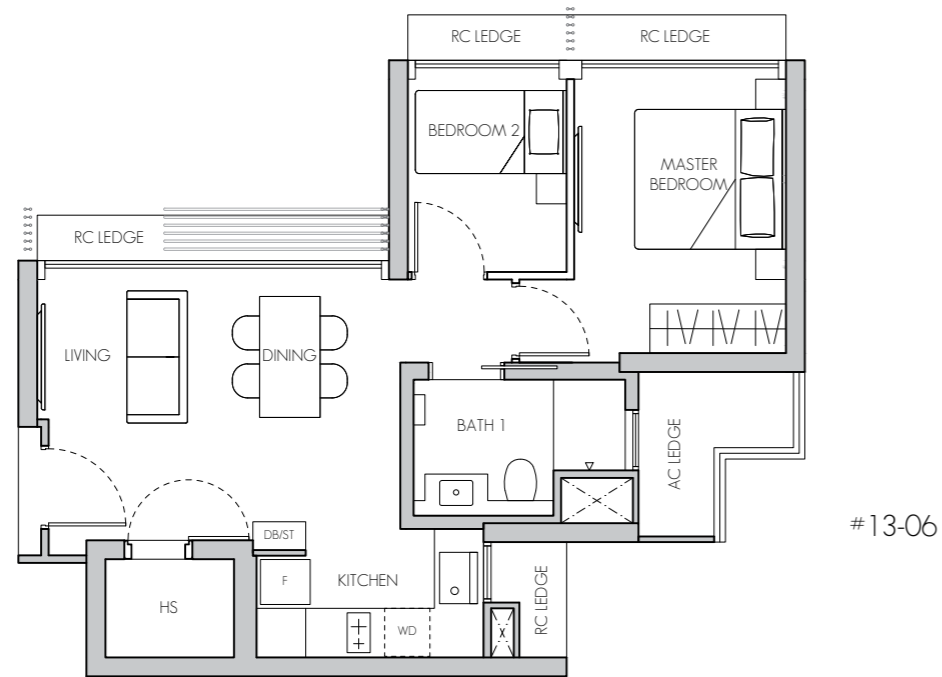
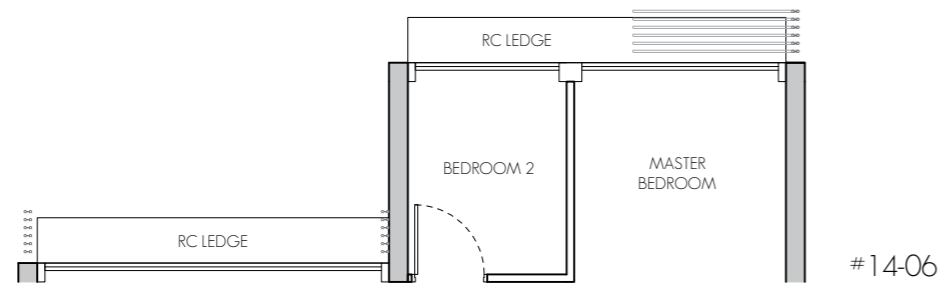


2-BEDROOM

TYPE B1

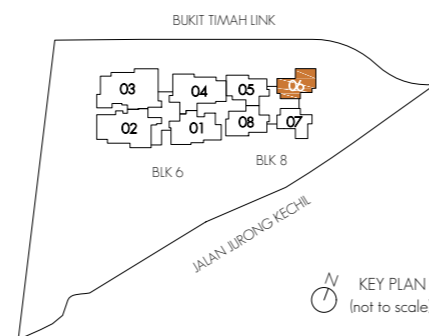
58 sq m / 624 sq ft

#13-06 - #20-06



LEGEND:

| | | | |
|----|------------------|----------|---|
| AC | AIR-CONDITIONER | ST | STORE |
| F | FRIDGE | DB | DISTRIBUTION BOARD |
| WD | WASHER CUM DRYER | HS | HOUSEHOLD SHELTER |
| O | OVEN (BELOW HOB) | RC LEDGE | REINFORCED CONCRETE (EXCLUDED FROM STRATA AREA) |
| | | | VOID SPACE (EXCLUDED FROM STRATA AREA) |



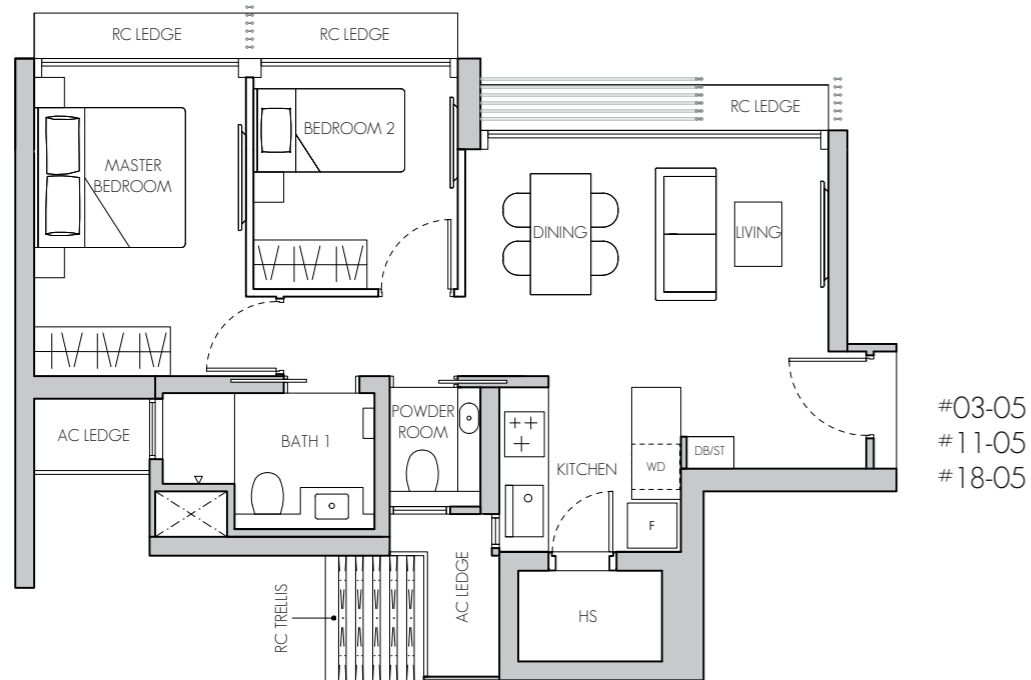
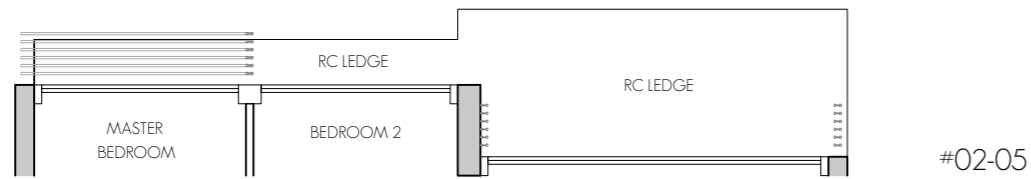
Note:
Area includes air-con (AC) ledge, balcony and private enclosed space (PES) where applicable. The plans are subject to change as may be required or approved by the relevant authorities. All areas and measurements stated or depicted herein are approximate only and are subject to final survey. Please refer to key plan for orientation.

2-BEDROOM

TYPE B2

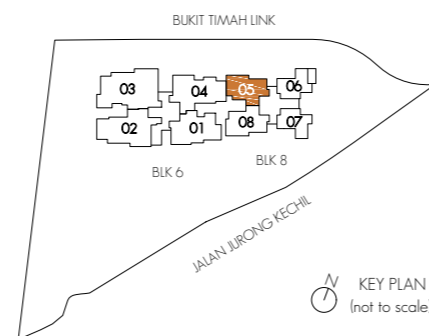
68 sq m / 732 sq ft

#02-05 - #20-05

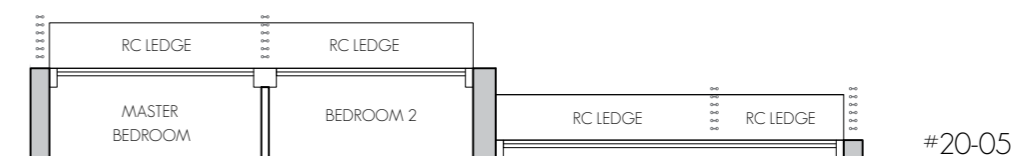
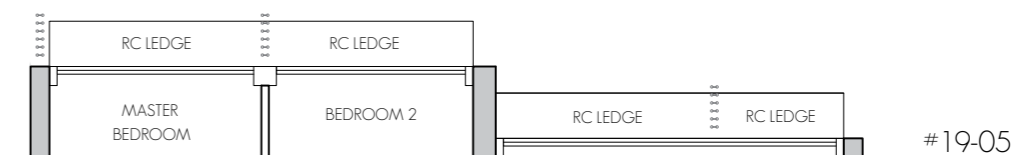
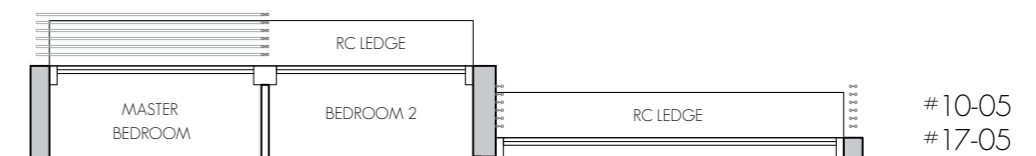
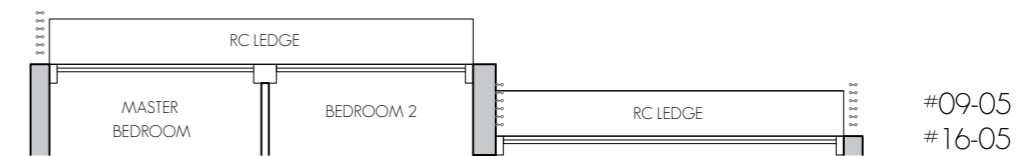
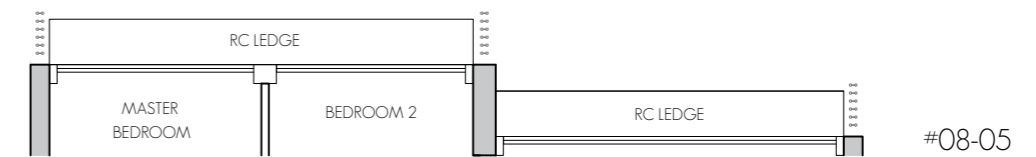
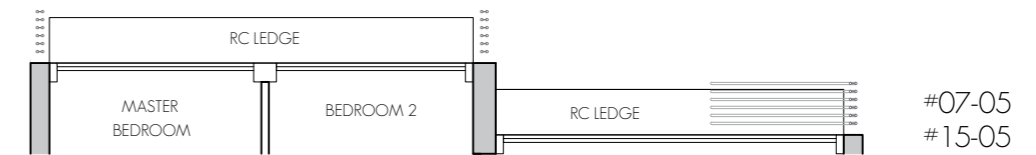
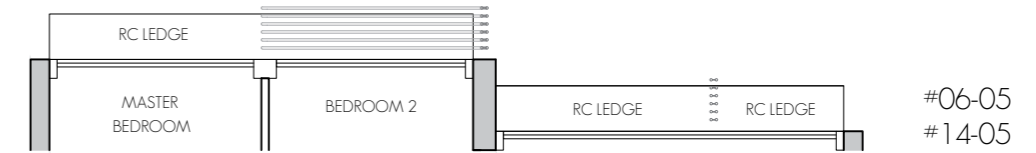
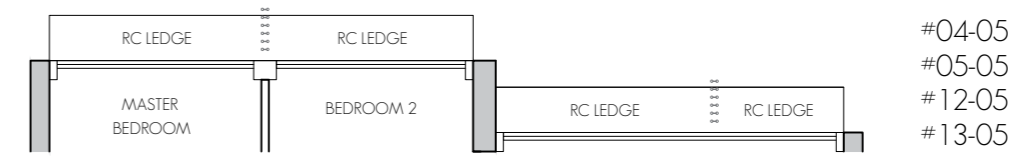


LEGEND:

| | | | |
|----|------------------|----------|---|
| AC | AIR-CONDITIONER | ST | STORE |
| F | FRIDGE | DB | DISTRIBUTION BOARD |
| WD | WASHER CUM DRYER | HS | HOUSEHOLD SHELTER |
| O | OVEN (BELOW HOB) | RC LEDGE | REINFORCED CONCRETE (EXCLUDED FROM STRATA AREA) |
| | | | VOID SPACE (EXCLUDED FROM STRATA AREA) |



Note:
Area includes air-con (AC) ledge, balcony and private enclosed space (PES) where applicable. The plans are subject to change as may be required or approved by the relevant authorities. All areas and measurements stated or depicted herein are approximate only and are subject to final survey. Please refer to key plan for orientation.

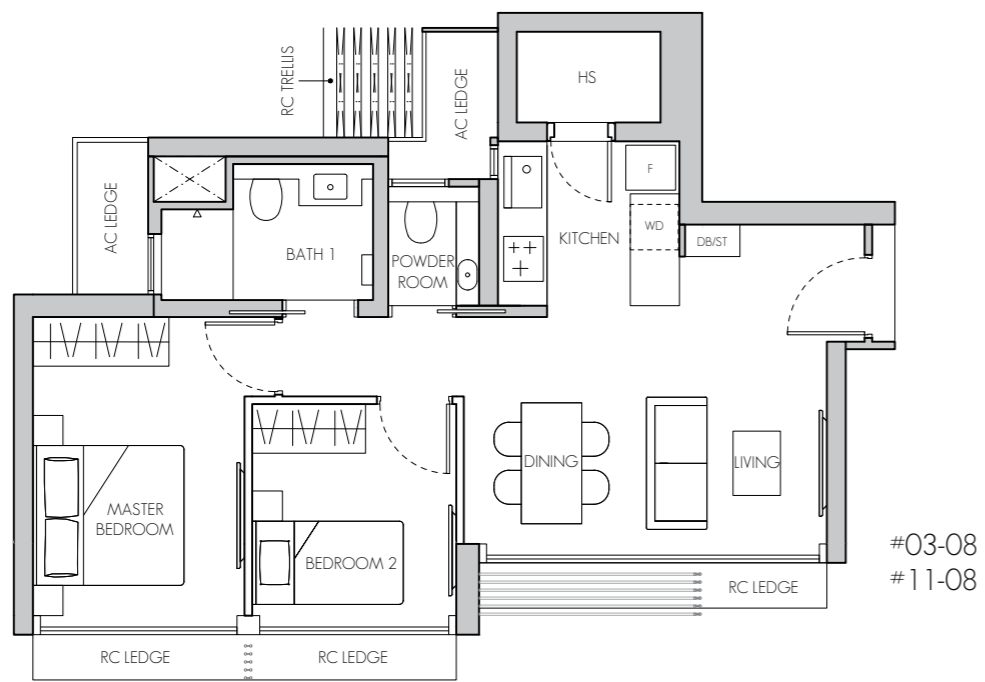


2-BEDROOM

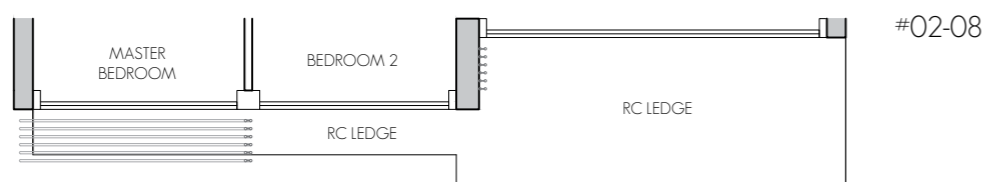
TYPE B3

68 sq m / 732 sq ft

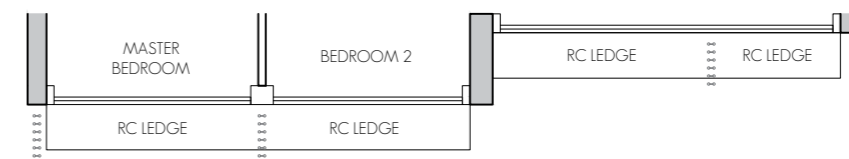
#02-08 - #20-08



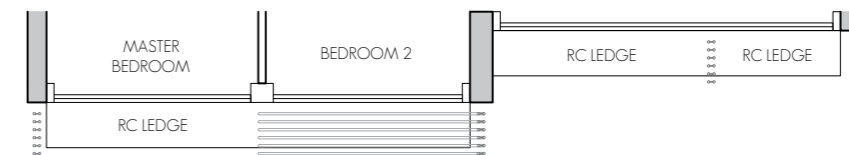
#03-08
#11-08



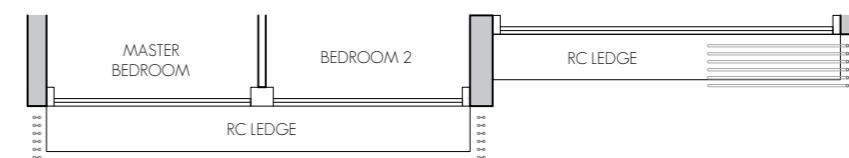
#02-08



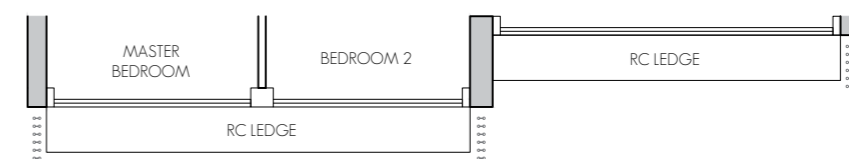
#04-08
#05-08
#12-08
#13-08
#19-08
#20-08



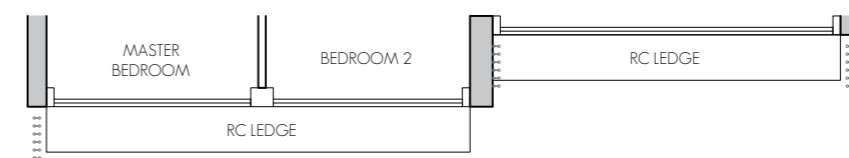
#06-08
#14-08



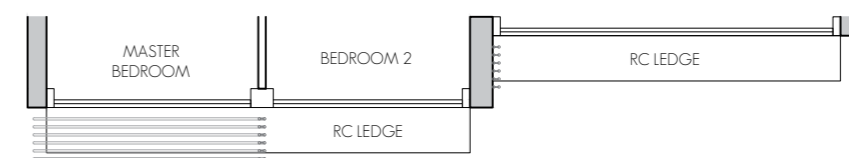
#07-08
#15-08



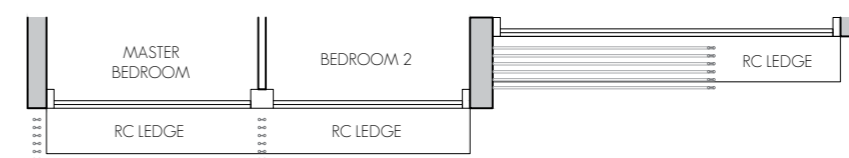
#08-08



#09-08
#16-08



#10-08
#17-08

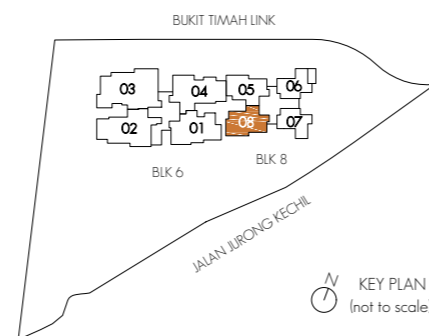


#18-08



LEGEND:

| | | | |
|----|------------------|----------|---|
| AC | AIR-CONDITIONER | ST | STORE |
| F | FRIDGE | DB | DISTRIBUTION BOARD |
| WD | WASHER CUM DRYER | HS | HOUSEHOLD SHELTER |
| O | OVEN (BELOW HOB) | RC LEDGE | REINFORCED CONCRETE (EXCLUDED FROM STRATA AREA) |
| | | | VOID SPACE (EXCLUDED FROM STRATA AREA) |



KEY PLAN
(not to scale)

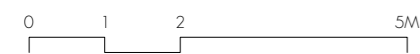
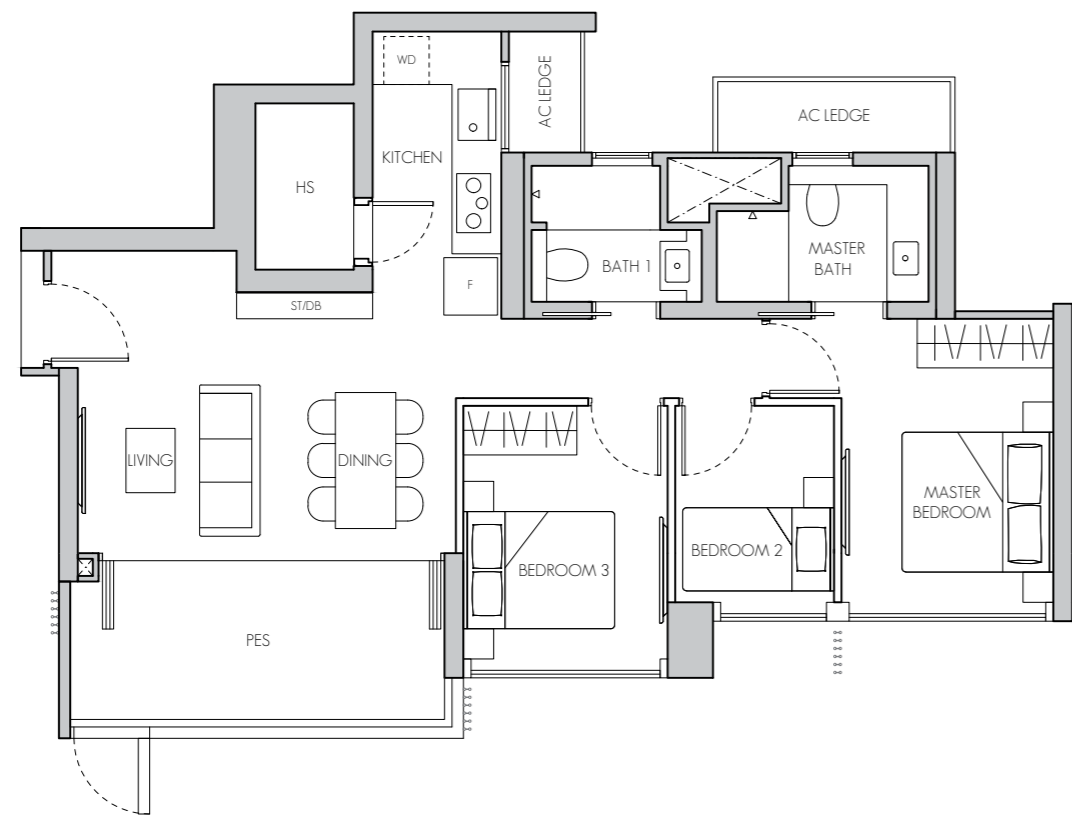
Note:
Area includes air-con (AC) ledge, balcony and private enclosed space (PES) where applicable. The plans are subject to change as may be required or approved by the relevant authorities. All areas and measurements stated or depicted herein are approximate only and are subject to final survey. Please refer to key plan for orientation.

3-BEDROOM

TYPE C1(p)

95 sq m / 1023 sq ft

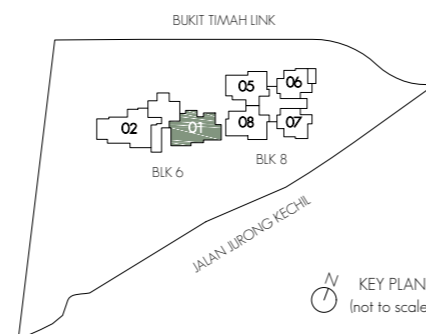
#01-01



LEGEND:

| | | | |
|-----|------------------------|----------|---|
| AC | AIR-CONDITIONER | ST | STORE |
| F | FRIDGE | DB | DISTRIBUTION BOARD |
| WD | WASHER CUM DRYER | HS | HOUSEHOLD SHELTER |
| O | OVEN (BELOW HOB) | RC LEDGE | REINFORCED CONCRETE (EXCLUDED FROM STRATA AREA) |
| PES | PRIVATE ENCLOSED SPACE | | VOID SPACE (EXCLUDED FROM STRATA AREA) |

Note:
Area includes air-con (AC) ledge, balcony and private enclosed space (PES) where applicable. The plans are subject to change as may be required or approved by the relevant authorities. All areas and measurements stated or depicted herein are approximate only and are subject to final survey. Please refer to key plan for orientation.

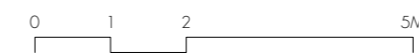
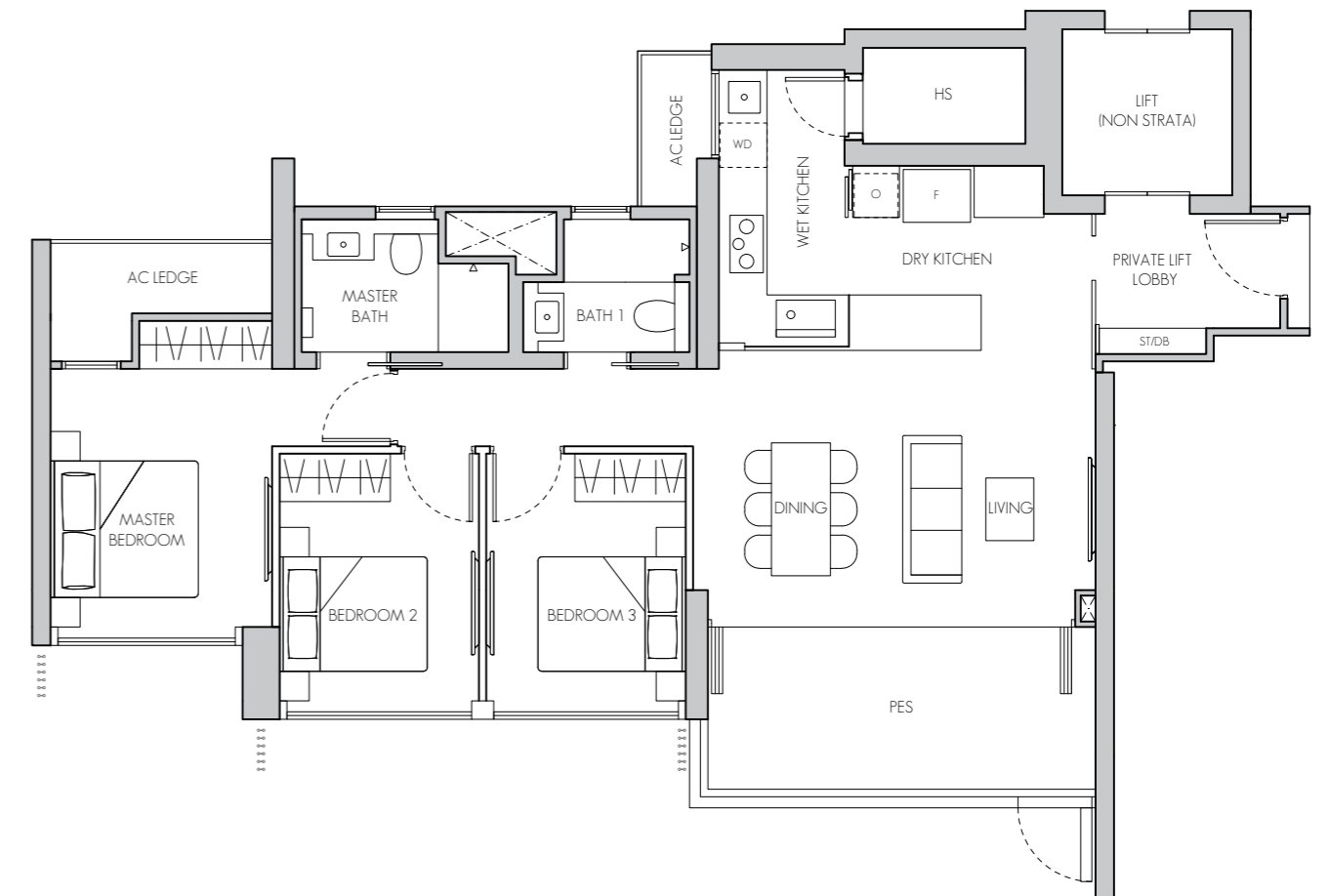


3-BEDROOM

TYPE C4(p)

118 sq m / 1270 sq ft

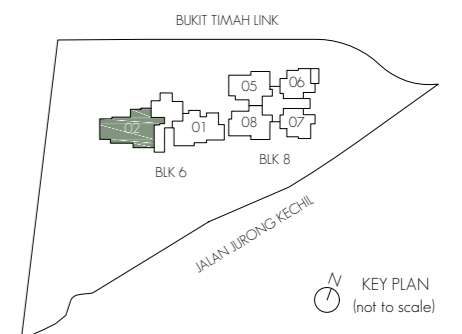
#01-02



LEGEND:

| | | | |
|-----|------------------------|----------|---|
| AC | AIR-CONDITIONER | ST | STORE |
| F | FRIDGE | DB | DISTRIBUTION BOARD |
| WD | WASHER CUM DRYER | HS | HOUSEHOLD SHELTER |
| O | OVEN | RC LEDGE | REINFORCED CONCRETE (EXCLUDED FROM STRATA AREA) |
| PES | PRIVATE ENCLOSED SPACE | | VOID SPACE (EXCLUDED FROM STRATA AREA) |

Note:
Area includes air-con (AC) ledge, balcony and private enclosed space (PES) where applicable. The plans are subject to change as may be required or approved by the relevant authorities. All areas and measurements stated or depicted herein are approximate only and are subject to final survey. Please refer to key plan for orientation.

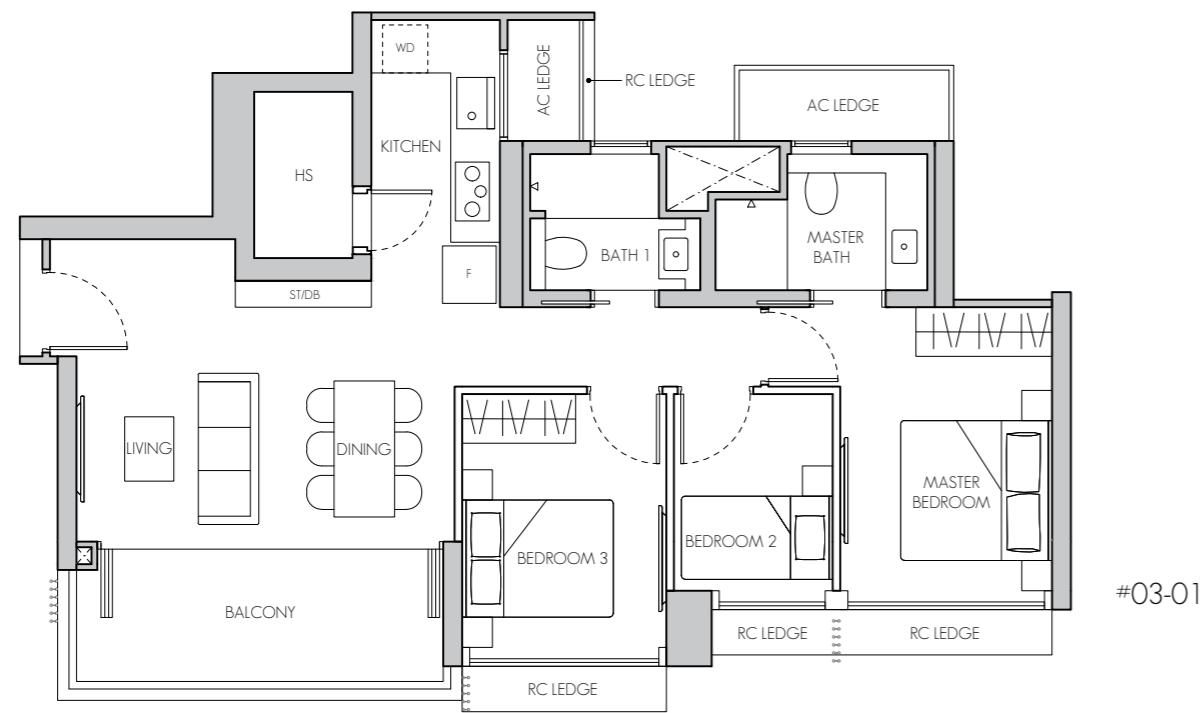


3-BEDROOM

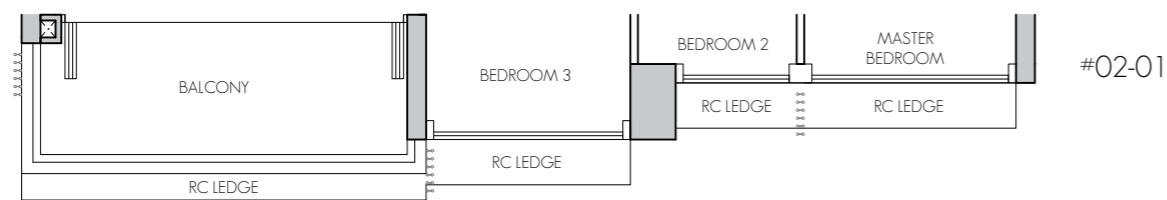
TYPE C1

93 sq m / 1001 sq ft

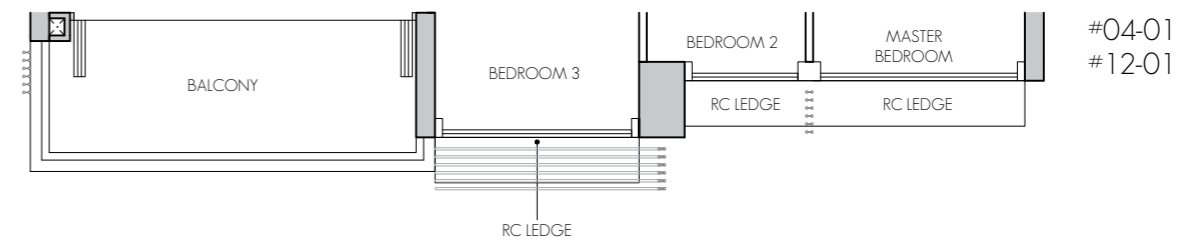
#02-01 - #20-01



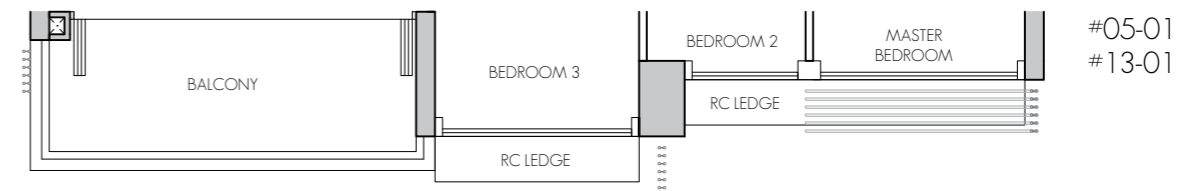
#03-01



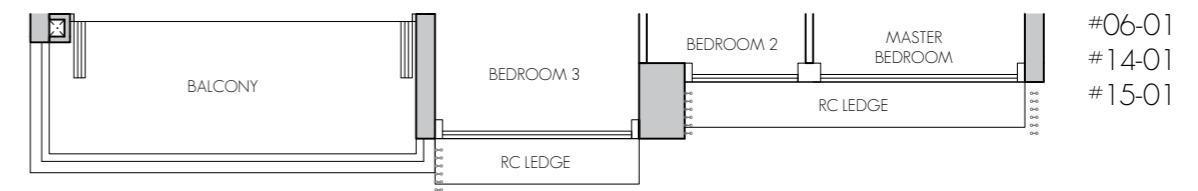
#02-01



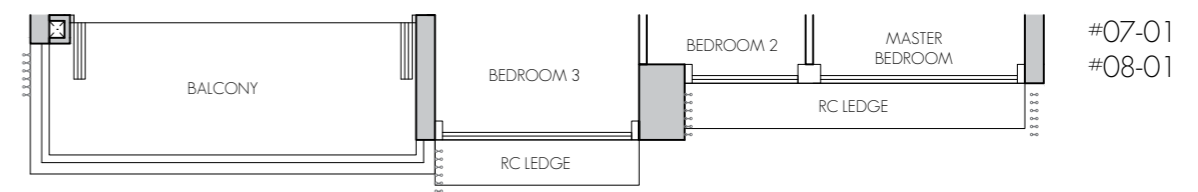
#04-01
#12-01



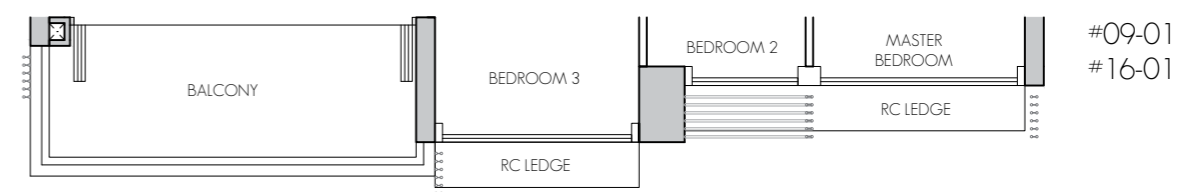
#05-01
#13-01



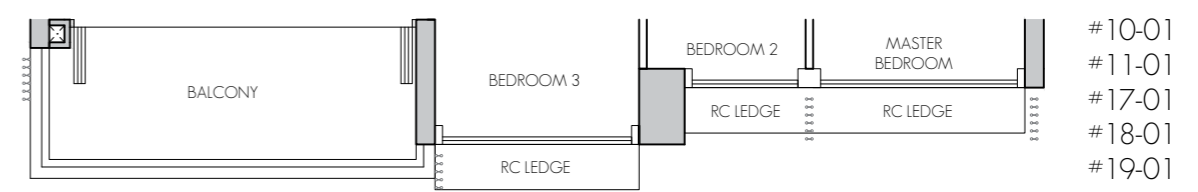
#06-01
#14-01
#15-01



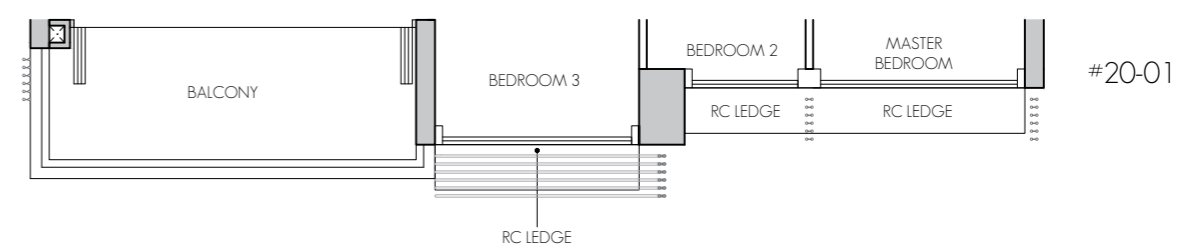
#07-01
#08-01



#09-01
#16-01



#10-01
#11-01
#17-01
#18-01
#19-01

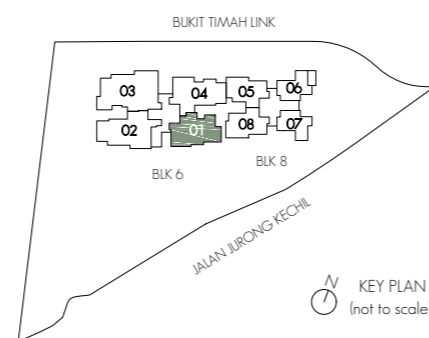


#20-01



LEGEND:

| | | | |
|----|------------------|----------|---|
| AC | AIR-CONDITIONER | ST | STORE |
| F | FRIDGE | DB | DISTRIBUTION BOARD |
| WD | WASHER CUM DRYER | HS | HOUSEHOLD SHELTER |
| O | OVEN (BELOW HOB) | RC LEDGE | REINFORCED CONCRETE (EXCLUDED FROM STRATA AREA) |
| | | | VOID SPACE (EXCLUDED FROM STRATA AREA) |



KEY PLAN
(not to scale)

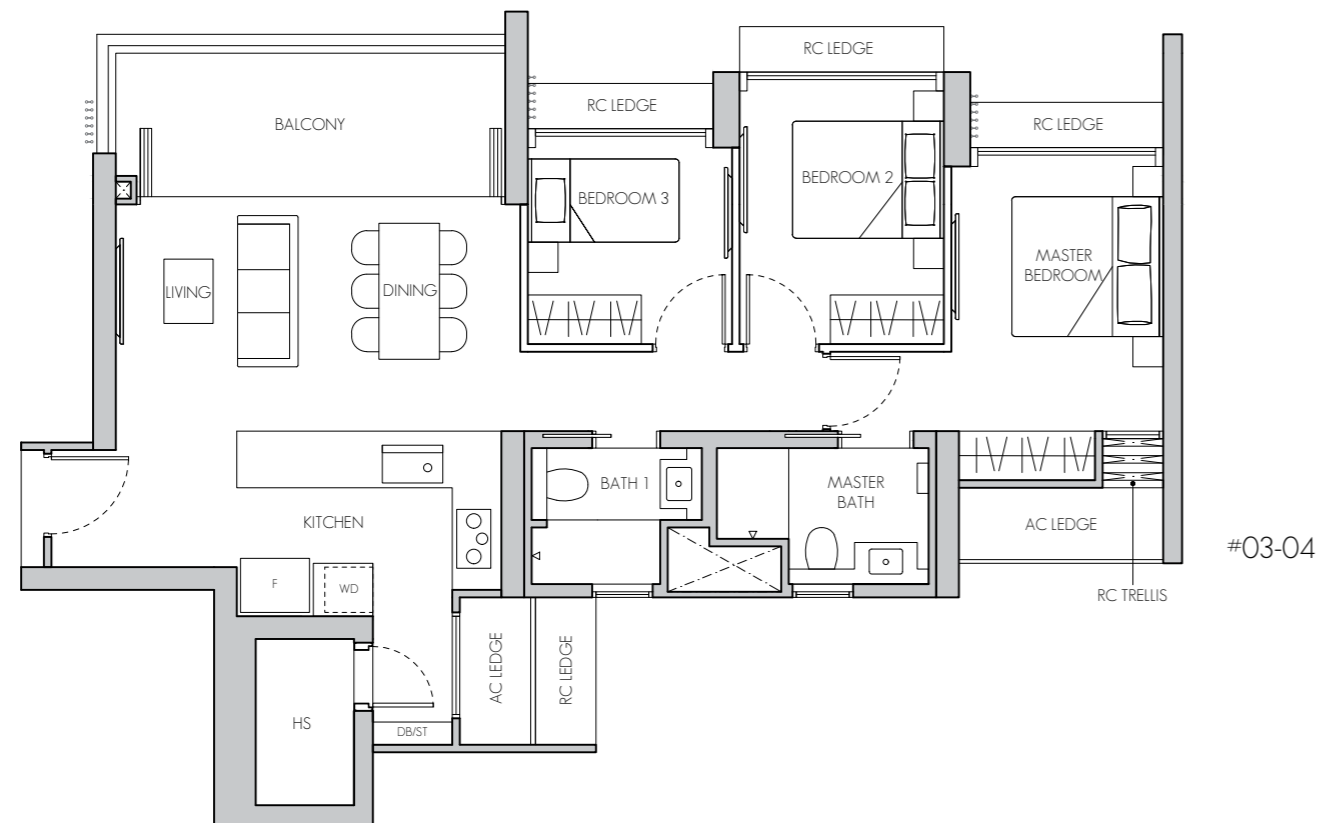
Note:
Area includes air-con (AC) ledge, balcony and private enclosed space (PES) where applicable. The plans are subject to change as may be required or approved by the relevant authorities. All areas and measurements stated or depicted herein are approximate only and are subject to final survey. Please refer to key plan for orientation.

3-BEDROOM

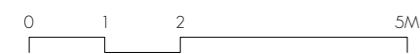
TYPE C2

103 sq m / 1109 sq ft

#02-04 - #08-04

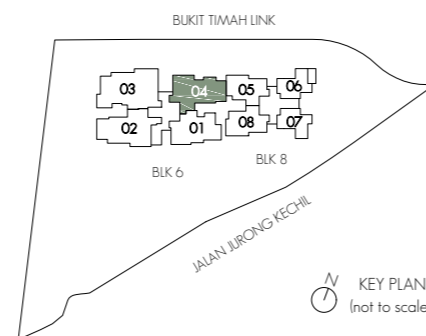


#03-04



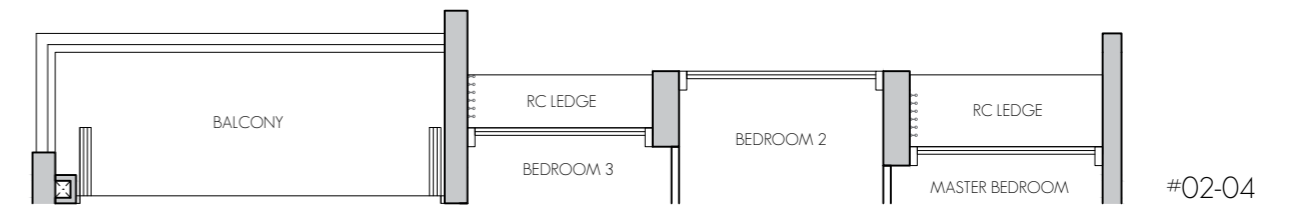
LEGEND:

| | | | |
|----|------------------|----------|---|
| AC | AIR-CONDITIONER | ST | STORE |
| F | FRIDGE | DB | DISTRIBUTION BOARD |
| WD | WASHER CUM DRYER | HS | HOUSEHOLD SHELTER |
| O | OVEN (BELOW HOB) | RC LEDGE | REINFORCED CONCRETE (EXCLUDED FROM STRATA AREA) |
| | | | VOID SPACE (EXCLUDED FROM STRATA AREA) |

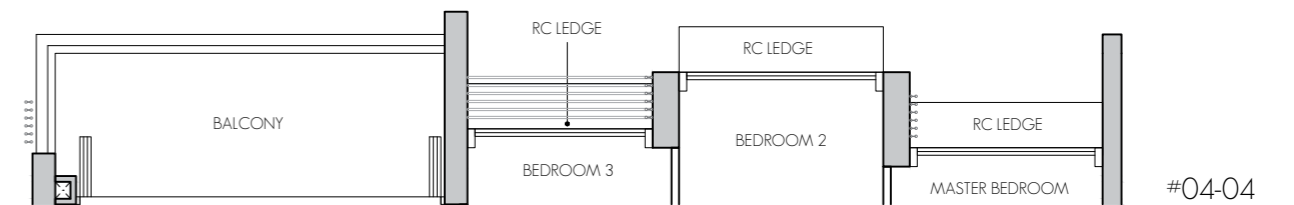


KEY PLAN
(not to scale)

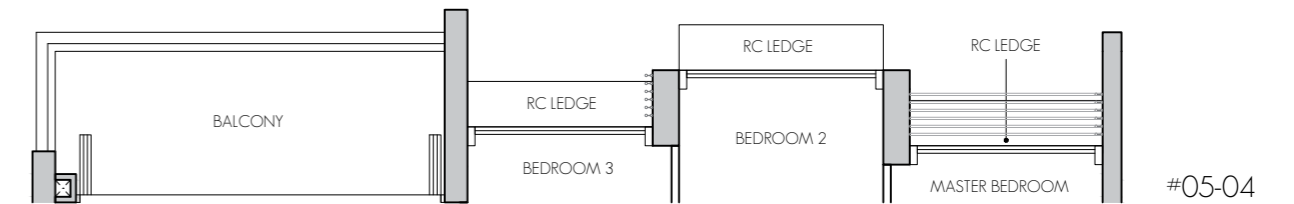
Note:
Area includes air-con (AC) ledge, balcony and private enclosed space (PES) where applicable. The plans are subject to change as may be required or approved by the relevant authorities. All areas and measurements stated or depicted herein are approximate only and are subject to final survey. Please refer to key plan for orientation.



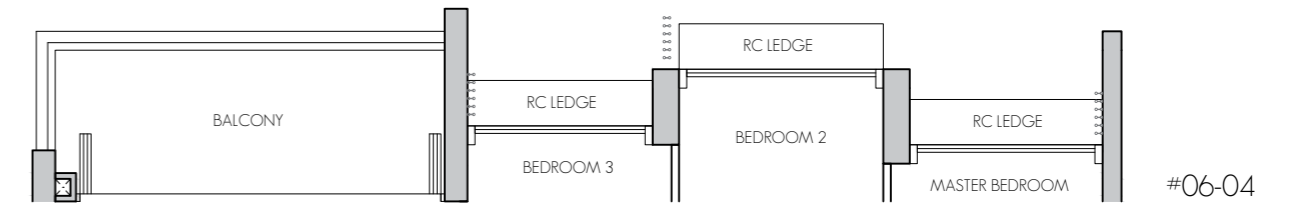
#02-04



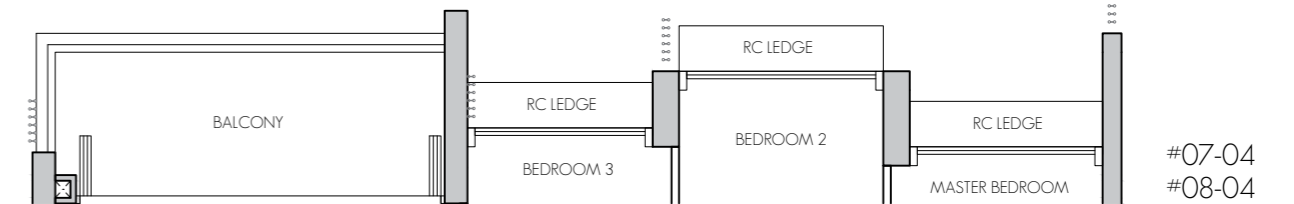
#04-04



#05-04



#06-04



#07-04

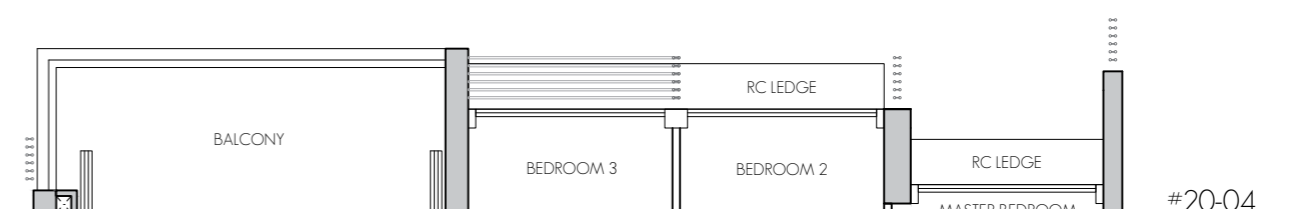
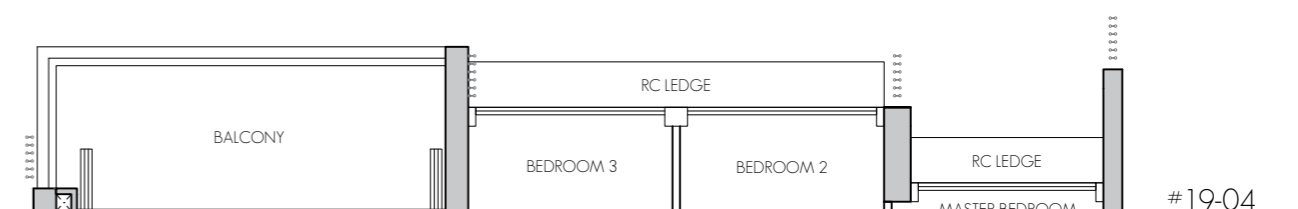
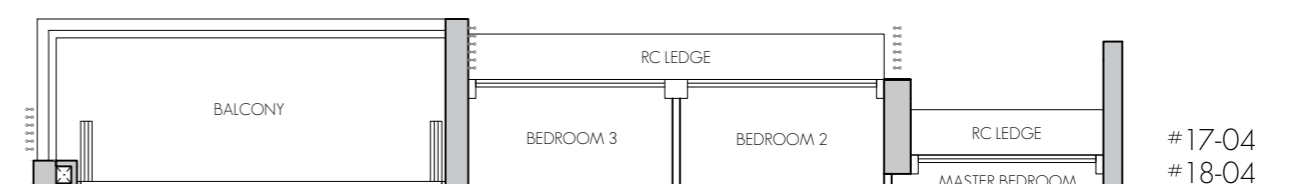
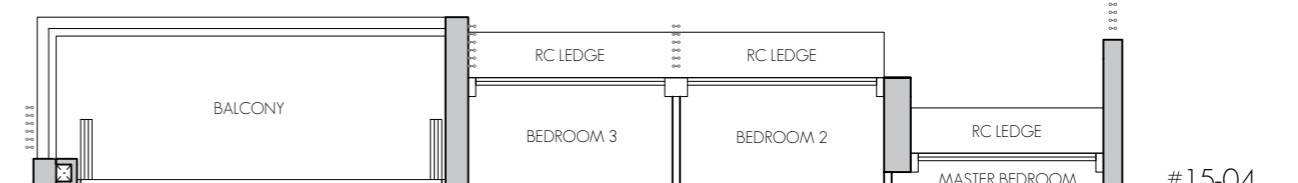
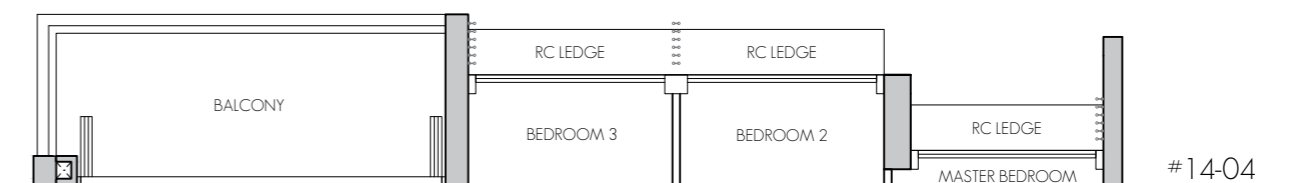
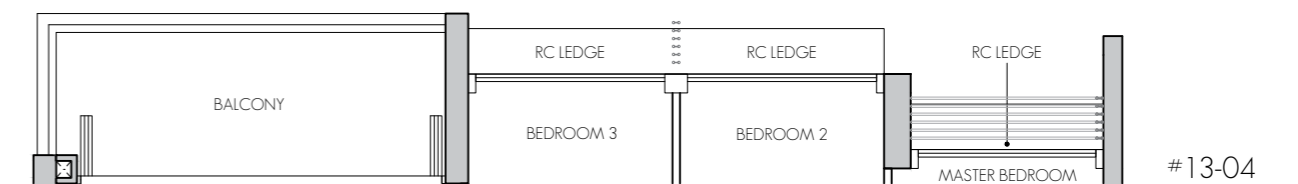
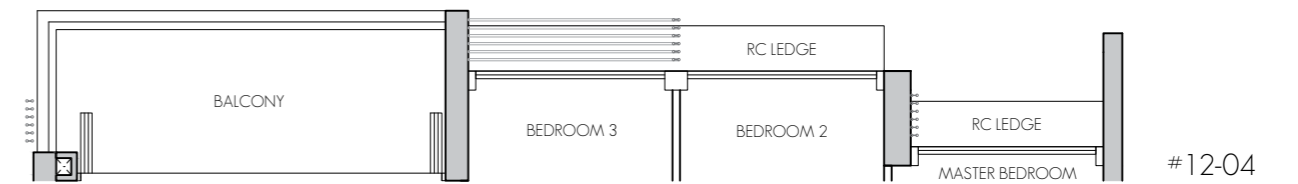
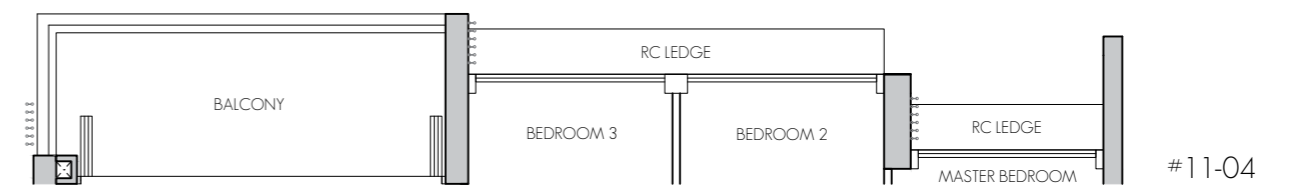
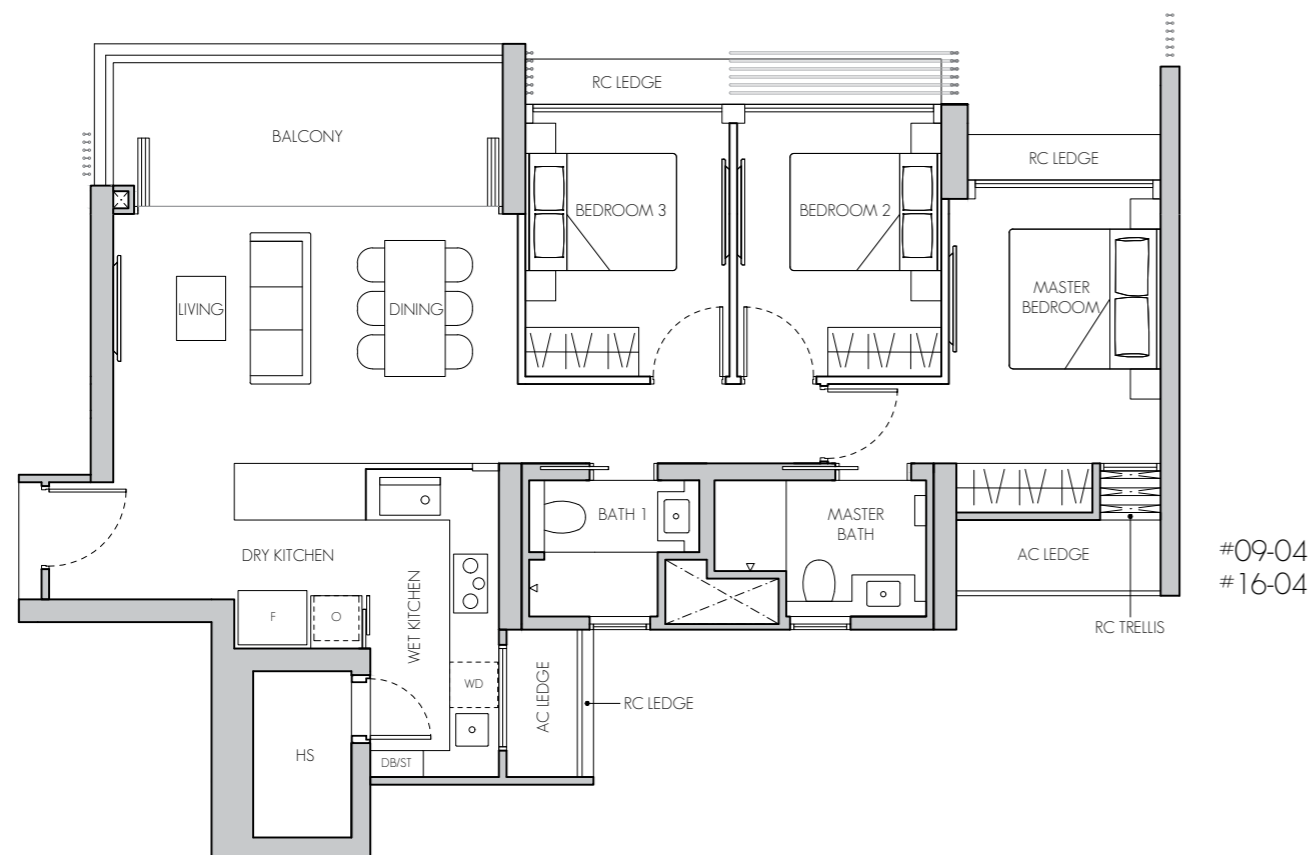
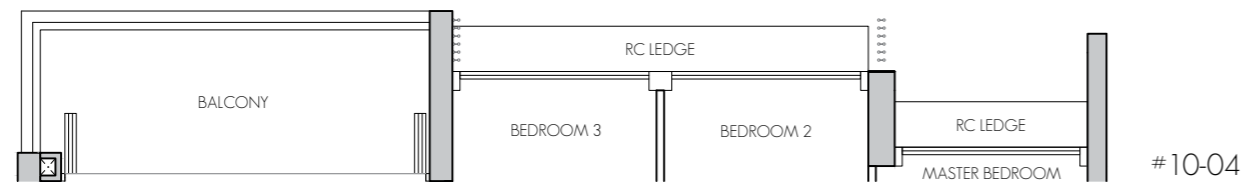
#08-04

3-BEDROOM

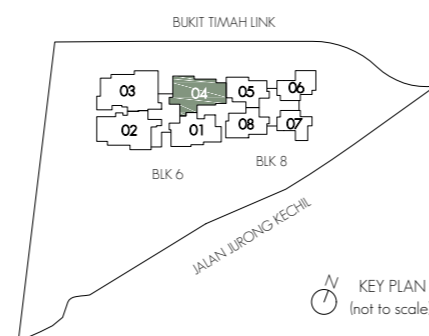
TYPE C3

108 sq m / 1163 sq ft

#09-04 - #20-04



- LEGEND:
- | | | | |
|----|------------------|----------|---|
| AC | AIR-CONDITIONER | ST | STORE |
| F | FRIDGE | DB | DISTRIBUTION BOARD |
| WD | WASHER CUM DRYER | HS | HOUSEHOLD SHELTER |
| O | OVEN | RC LEDGE | REINFORCED CONCRETE (EXCLUDED FROM STRATA AREA) |
| | | | VOID SPACE (EXCLUDED FROM STRATA AREA) |



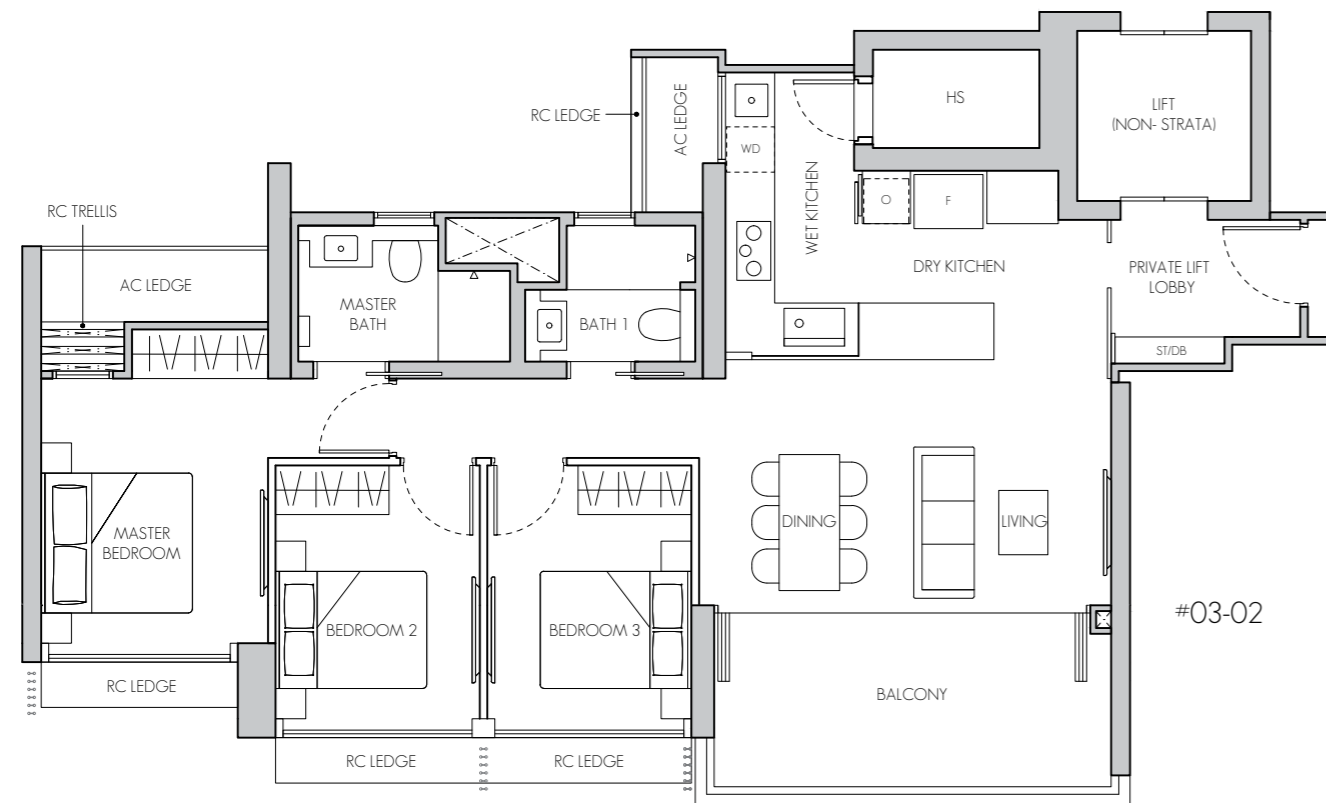
Note:
Area includes air-con (AC) ledge, balcony and private enclosed space (PES) where applicable. The plans are subject to change as may be required or approved by the relevant authorities. All areas and measurements stated or depicted herein are approximate only and are subject to final survey. Please refer to key plan for orientation.

3-BEDROOM

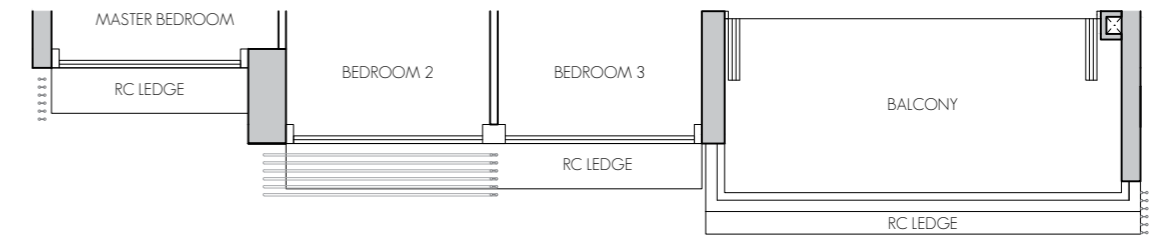
TYPE C4

115 sq m / 1238 sq ft

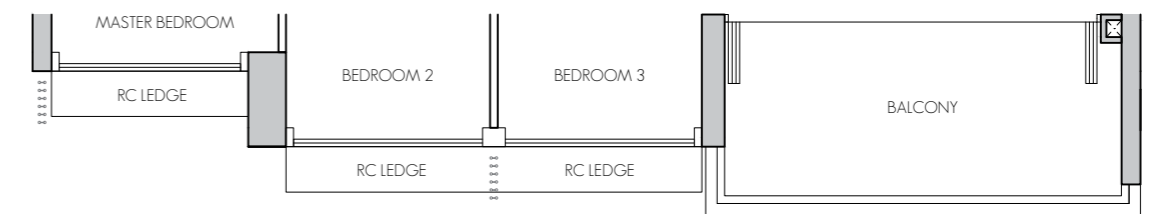
#02-02 - #08-02



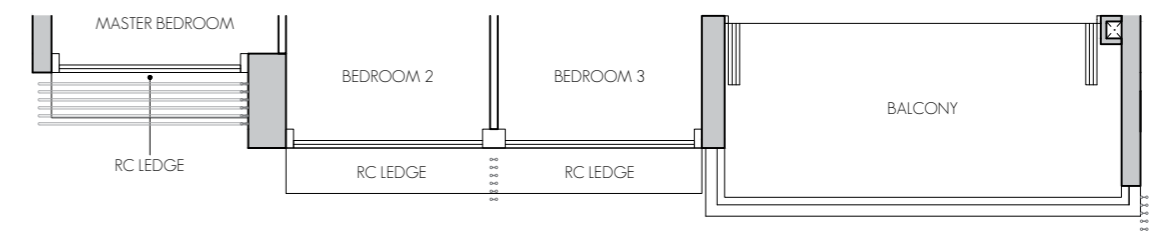
#03-02



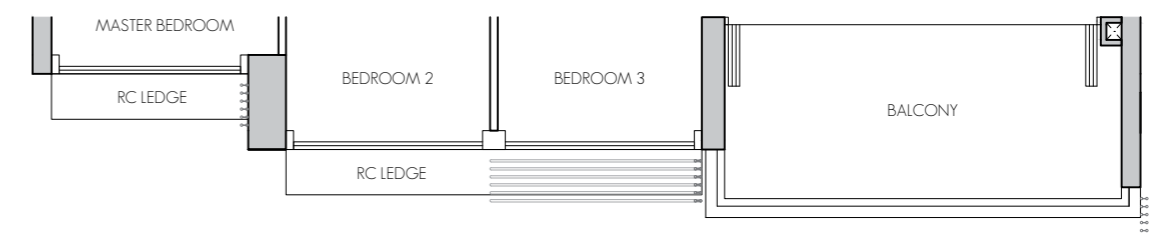
#02-02



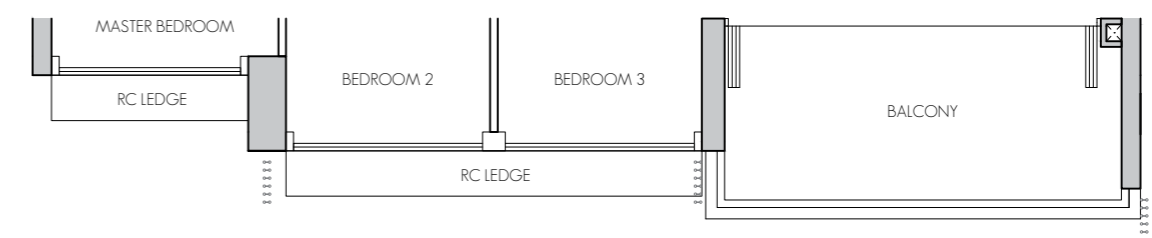
#04-02



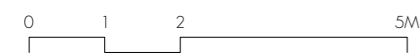
#05-02



#06-02

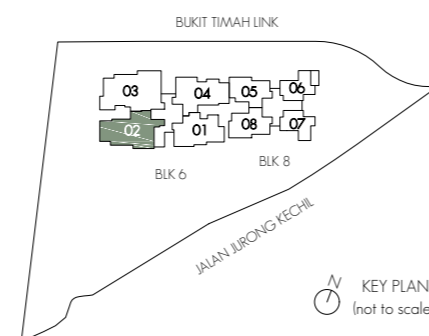


#07-02
#08-02



LEGEND:

| | | | |
|----|------------------|----------|---|
| AC | AIR-CONDITIONER | ST | STORE |
| F | FRIDGE | DB | DISTRIBUTION BOARD |
| WD | WASHER CUM DRYER | HS | HOUSEHOLD SHELTER |
| O | OVEN | RC LEDGE | REINFORCED CONCRETE (EXCLUDED FROM STRATA AREA) |
| | | | VOID SPACE (EXCLUDED FROM STRATA AREA) |



KEY PLAN
(not to scale)

Note:
Area includes air-con (AC) ledge, balcony and private enclosed space (PES) where applicable. The plans are subject to change as may be required or approved by the relevant authorities. All areas and measurements stated or depicted herein are approximate only and are subject to final survey. Please refer to key plan for orientation.

4-BEDROOM

TYPE D1

126 sq m / 1356 sq ft

#09-02 - #19-02

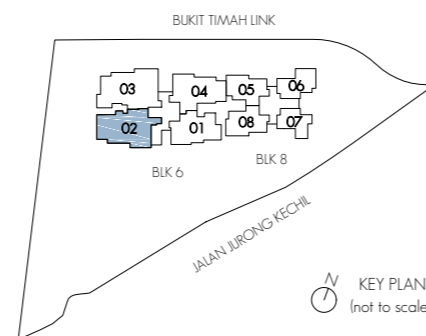


#09-02
#15-02
#16-02
#17-02

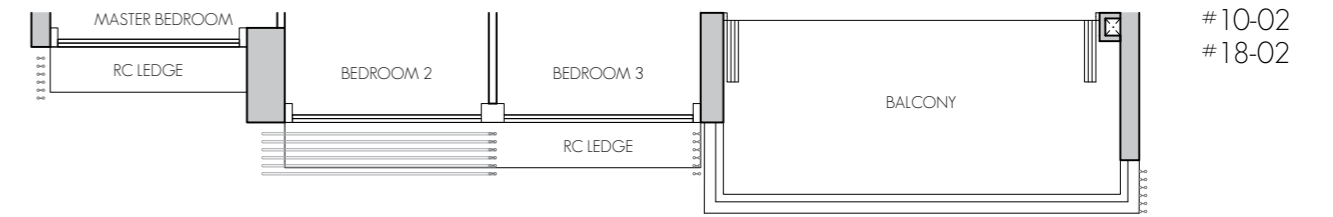


LEGEND:

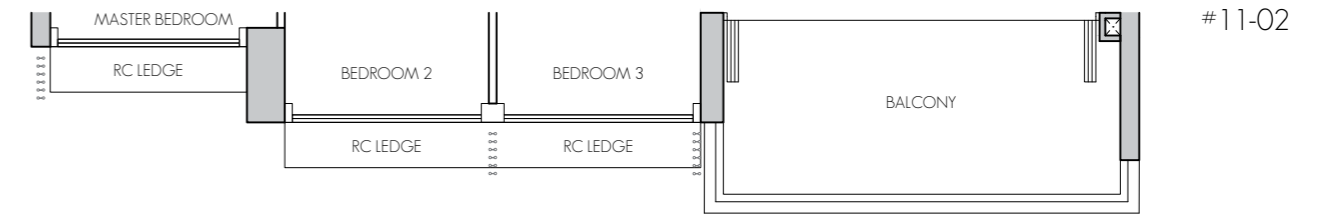
| | | | |
|------|-----------------------|----------|---|
| AC | AIR-CONDITIONER | ST | STORE |
| F | FRIDGE | DB | DISTRIBUTION BOARD |
| W | WASHER | HS | HOUSEHOLD SHELTER |
| D | DRYER | RC LEDGE | REINFORCED CONCRETE (EXCLUDED FROM STRATA AREA) |
| O&MO | OVEN & MICROWAVE OVEN | | VOID SPACE (EXCLUDED FROM STRATA AREA) |
| WC | WINE CHILLER | | |



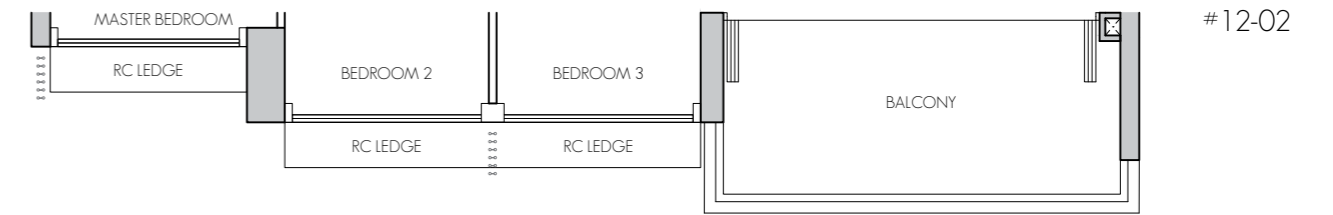
KEY PLAN
(not to scale)



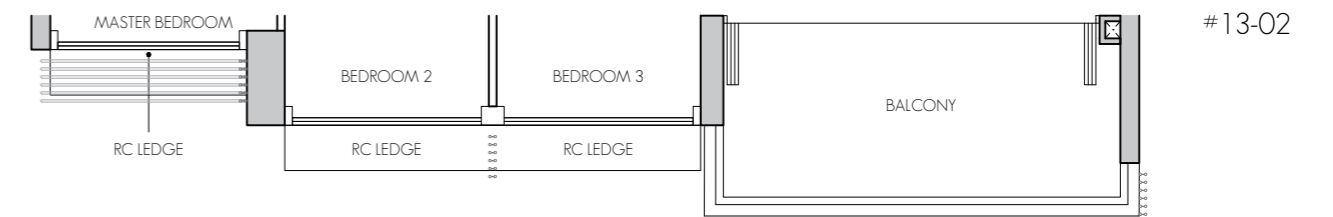
#10-02
#18-02



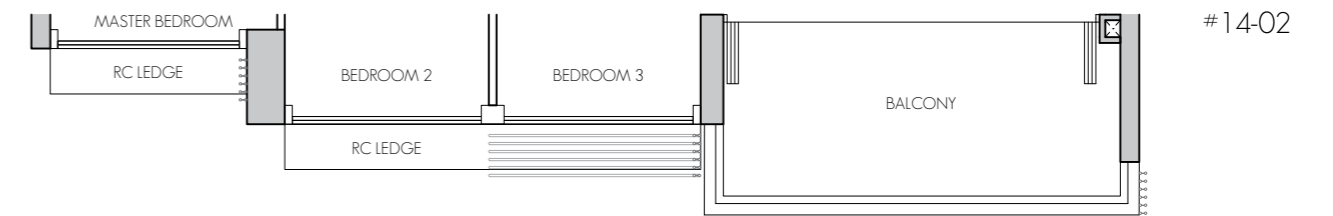
#11-02



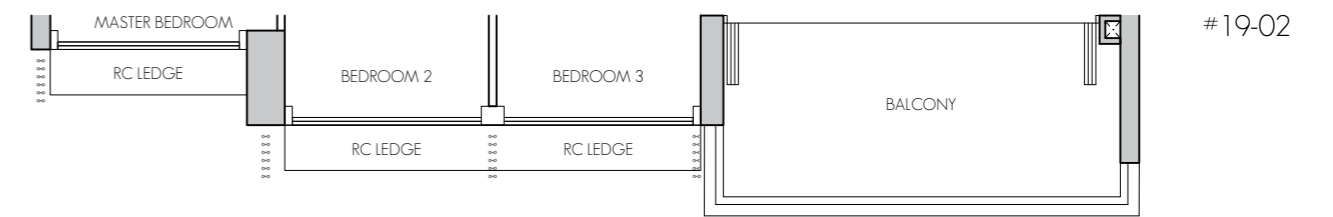
#12-02



#13-02



#14-02



#19-02

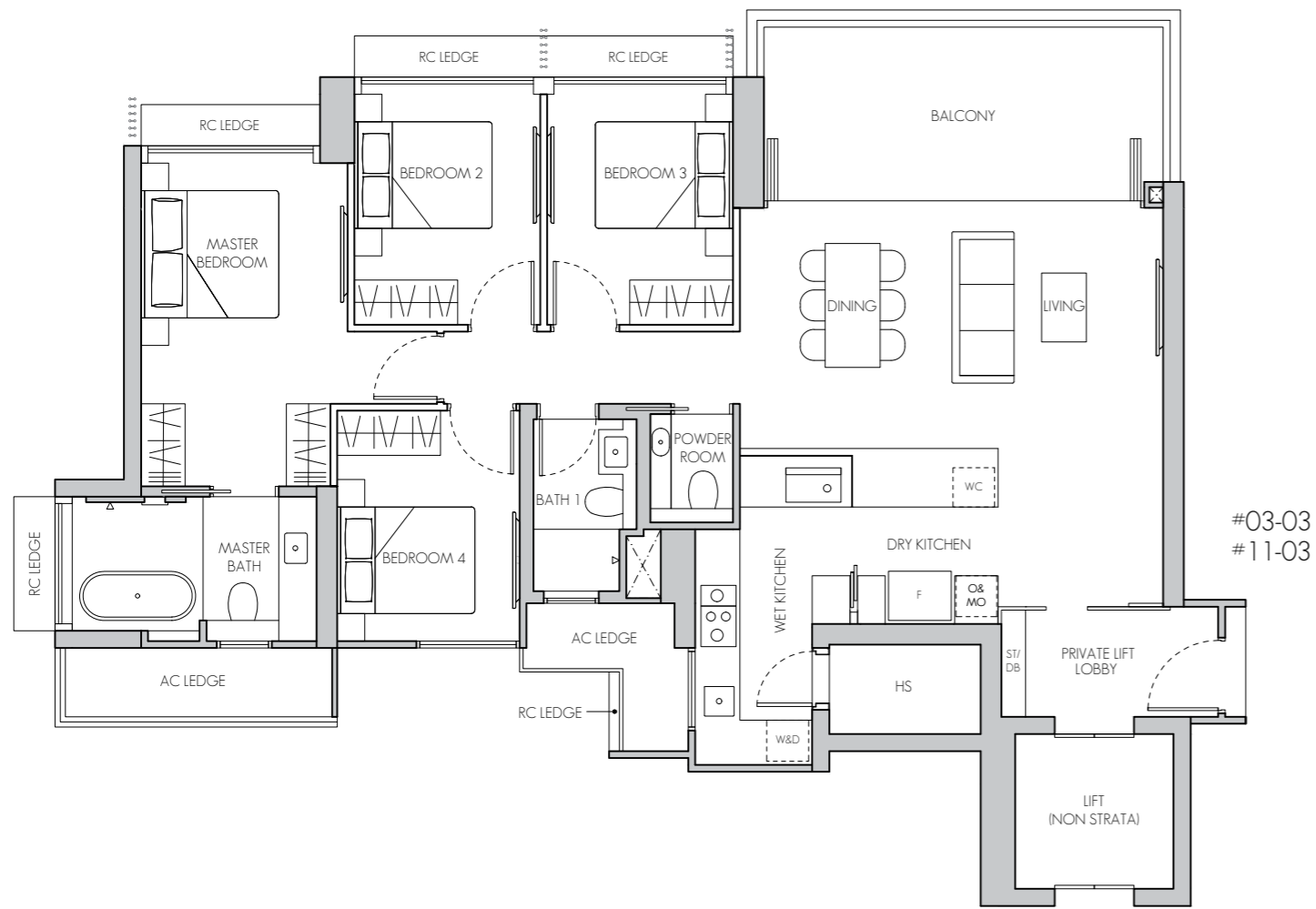
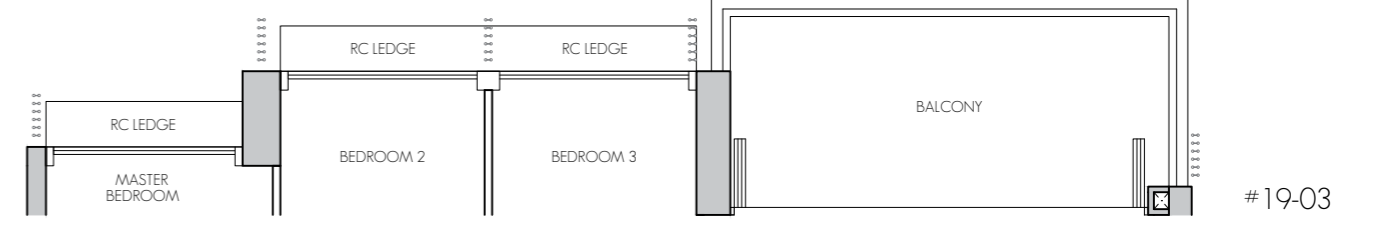
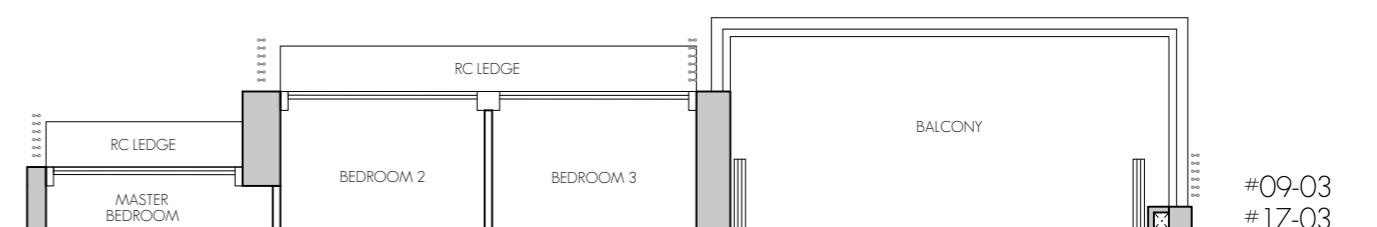
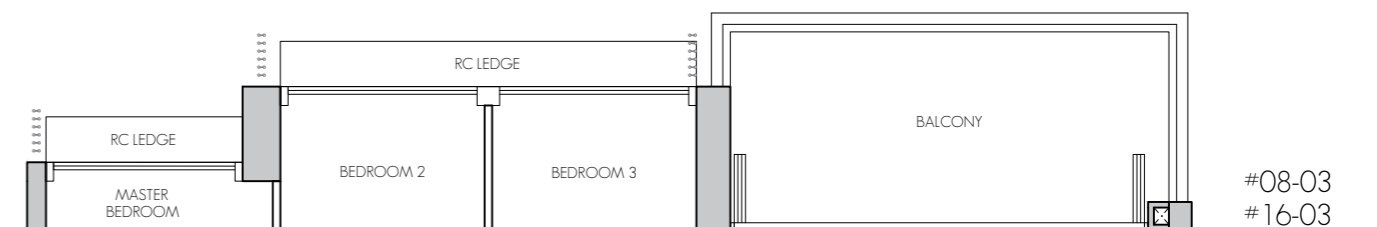
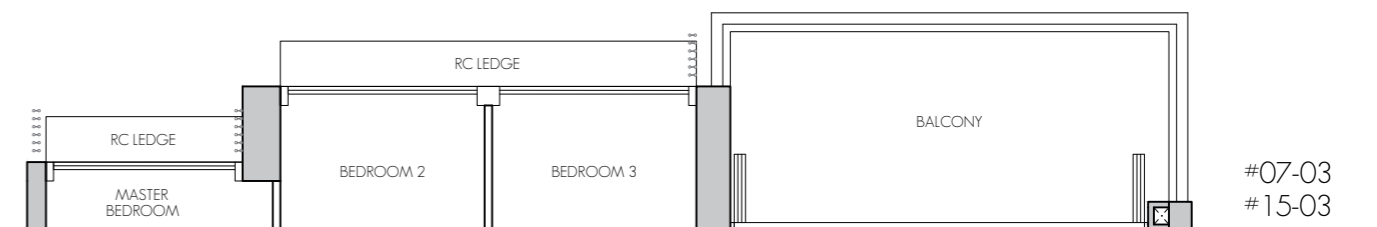
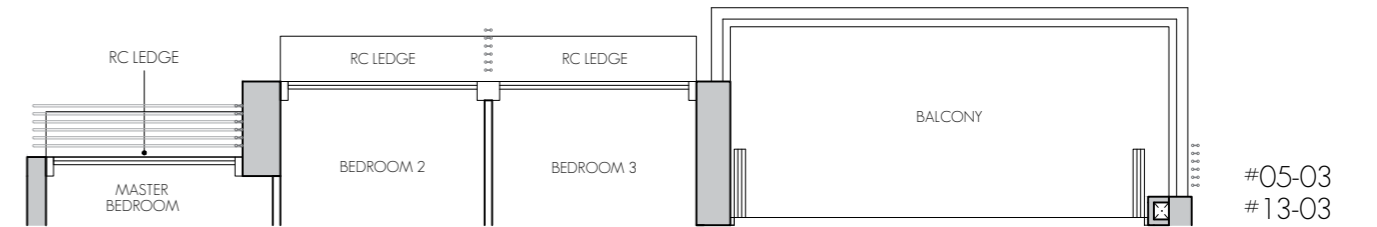
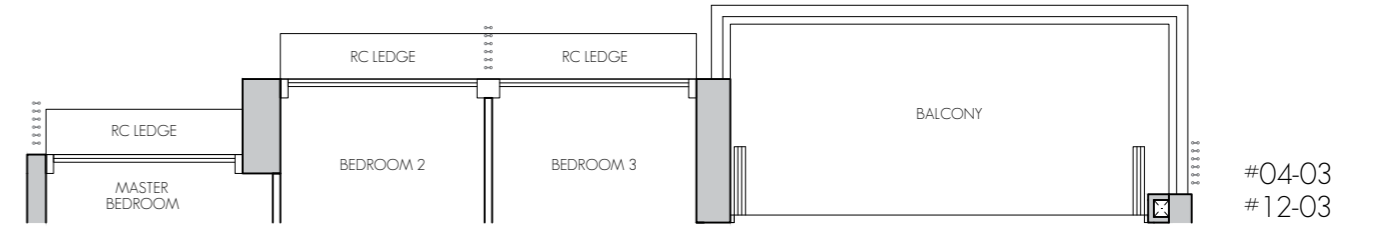
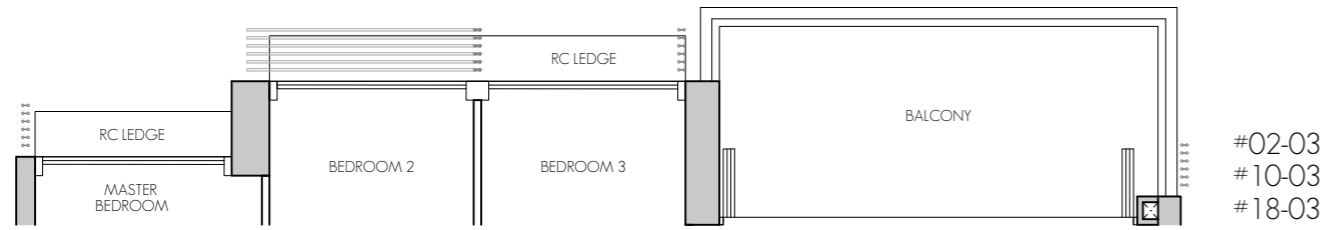
Note:
Area includes air-con (AC) ledge, balcony and private enclosed space (PES) where applicable. The plans are subject to change as may be required or approved by the relevant authorities. All areas and measurements stated or depicted herein are approximate only and are subject to final survey. Please refer to key plan for orientation.

4-BEDROOM

TYPE D2

148 sq m / 1593 sq ft

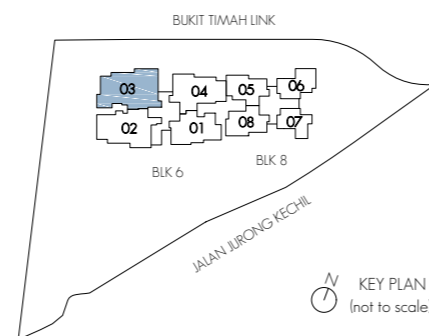
#02-03 - #19-03



LEGEND:

| | | | |
|------|-----------------------|----------|---|
| AC | AIR-CONDITIONER | ST | STORE |
| F | FRIDGE | DB | DISTRIBUTION BOARD |
| W&D | WASHER & DRYER | HS | HOUSEHOLD SHELTER |
| O&MO | OVEN & MICROWAVE OVEN | RC LEDGE | REINFORCED CONCRETE (EXCLUDED FROM STRATA AREA) |
| WC | WINE CHILLER | | VOID SPACE (EXCLUDED FROM STRATA AREA) |

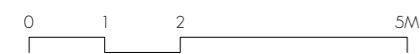
Note:
Area includes air-con (AC) ledge, balcony and private enclosed space (PES) where applicable. The plans are subject to change as may be required or approved by the relevant authorities. All areas and measurements stated or depicted herein are approximate only and are subject to final survey. Please refer to key plan for orientation.



PENTHOUSE

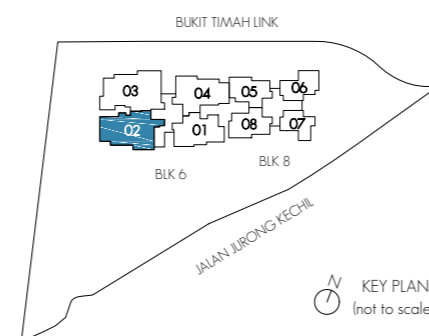
TYPE PH1

126 sq m / 1356 sq ft
#20-02



| | | | |
|---------|-------------------|----------|---|
| LEGEND: | | ST | STORE |
| AC | AIR-CONDITIONER | DB | DISTRIBUTION BOARD |
| F | FRIDGE | HS | HOUSEHOLD SHELTER |
| W | WASHER | RC LEDGE | REINFORCED CONCRETE (EXCLUDED FROM STRATA AREA) |
| D | DRYER | | VOID SPACE (EXCLUDED FROM STRATA AREA) |
| O&SO | OVEN & STEAM OVEN | DW | DISH WASHER |
| WC | WINE CHILLER | | |

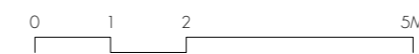
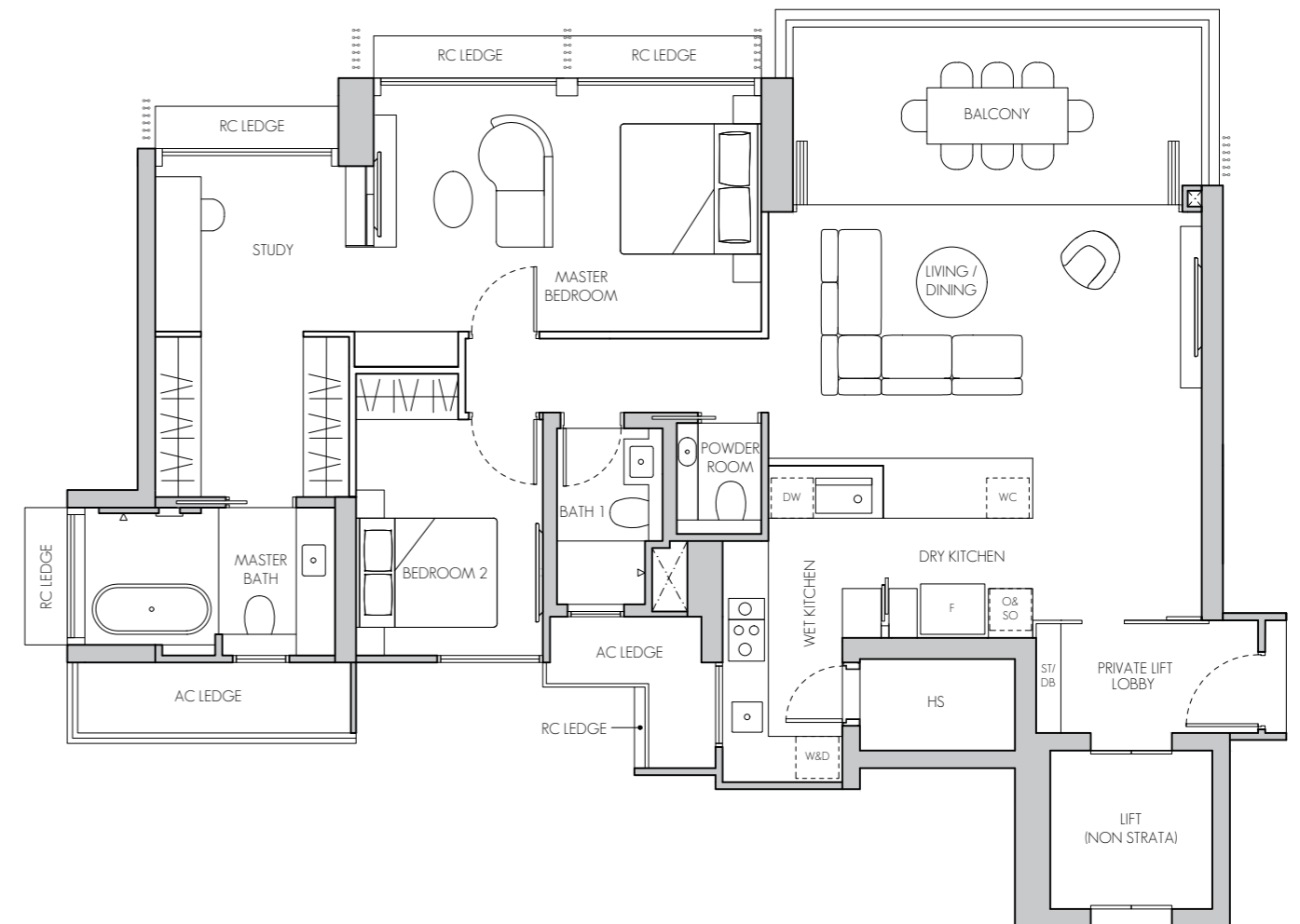
Note:
Area includes air-con (AC) ledge, balcony and private enclosed space (PES) where applicable. The plans are subject to change as may be required or approved by the relevant authorities. All areas and measurements stated or depicted herein are approximate only and are subject to final survey. Please refer to key plan for orientation.



PENTHOUSE

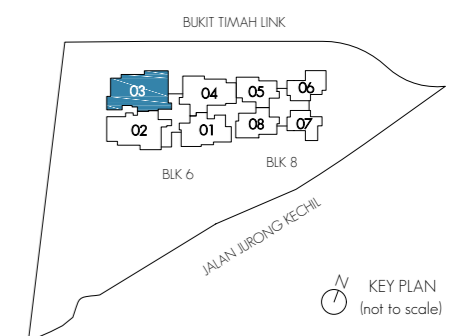
TYPE PH2

148 sq m / 1593 sq ft
#20-03



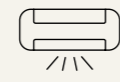
| | | | |
|---------|-------------------|----------|---|
| LEGEND: | | ST | STORE |
| AC | AIR-CONDITIONER | DB | DISTRIBUTION BOARD |
| F | FRIDGE | HS | HOUSEHOLD SHELTER |
| W&D | WASHER & DRYER | RC LEDGE | REINFORCED CONCRETE (EXCLUDED FROM STRATA AREA) |
| O&SO | OVEN & STEAM OVEN | | VOID SPACE (EXCLUDED FROM STRATA AREA) |
| WC | WINE CHILLER | | |
| DW | DISH WASHER | | |

Note:
Area includes air-con (AC) ledge, balcony and private enclosed space (PES) where applicable. The plans are subject to change as may be required or approved by the relevant authorities. All areas and measurements stated or depicted herein are approximate only and are subject to final survey. Please refer to key plan for orientation.



SMART & SUSTAINABLE

Embrace smart living, simplified with the ease and convenience of having technology at your fingertips.



Smart Air-Conditioning Control System

Stay cool effortlessly and remotely manage your air-conditioning settings via any connected device.



Smart Invite

Enhance convenience by pre-registering your visitors for seamless entry.



Smart Gateway

Effortlessly manage your smart home devices via the Mobile App.



Smart Booking

Effortlessly check the availability of facilities and book at your convenience using the Mobile App.



Smart Digital Lockset

Gone are the days of forgetting your physical door keys. Secure and unlock your home with a simple fingerprint, passcode, or even through your phone.



Smart Parcel

Eliminate the need to wait for deliveries. Have your packages sent to the Parcel Box and retrieve them at your leisure.

Incorporate sustainability into your lifestyle with eco-conscious features that not only benefits the environment but also enhances energy efficiency, reduces carbon footprint, and provides a comfortable living space.



EV Charging

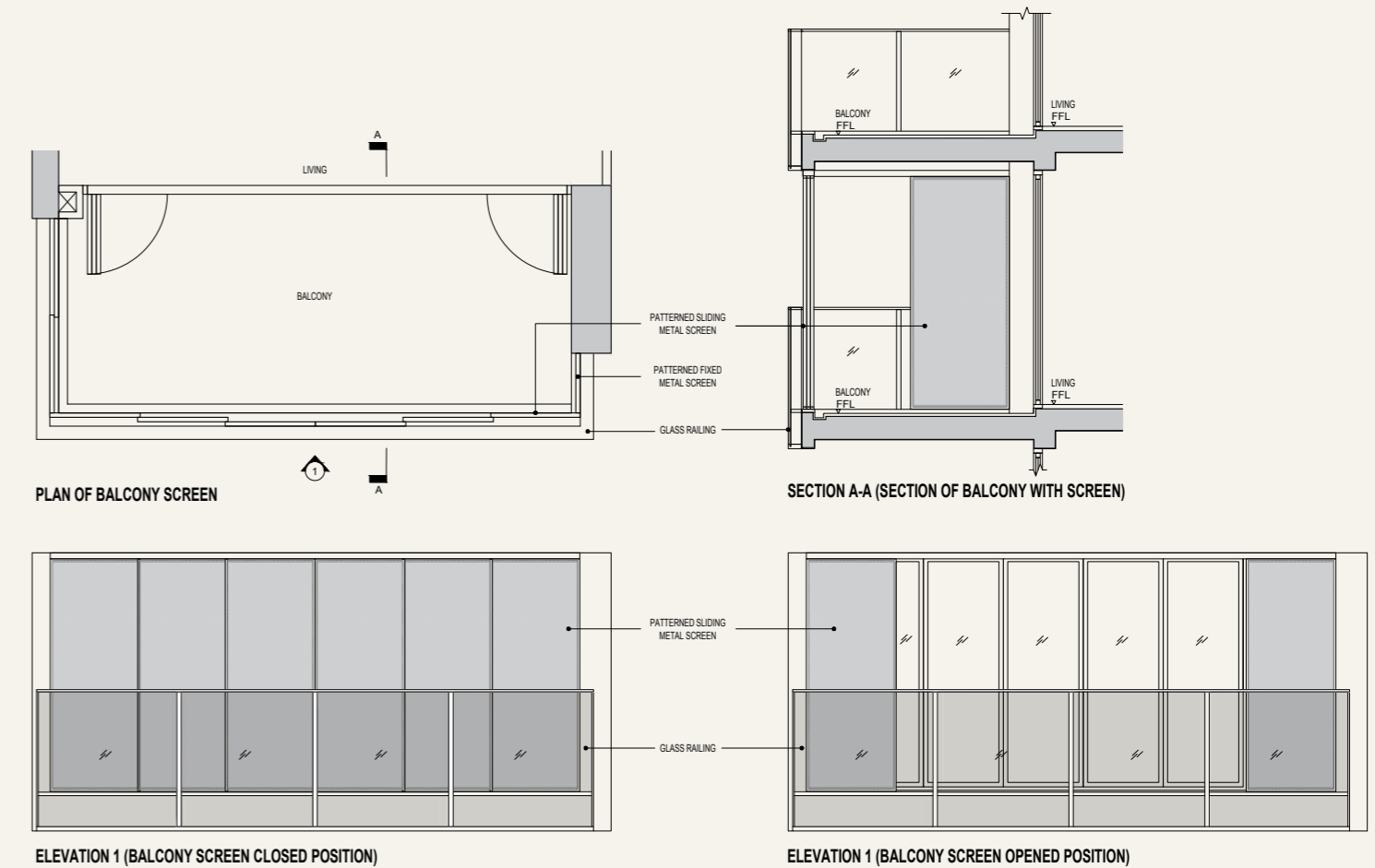
EV charging offers the convenience of a full battery each morning while reducing the carbon footprint of your travels.



Solar Panel

Embrace environmental sustainability with solar panels illuminating common areas, reducing energy consumption and enhancing long-term savings.

APPROVED BALCONY SCREEN



BALCONY SCREEN NOTICE:

1. THE BALCONY SCREEN SHALL NOT BE ENCLOSED UNLESS WITH THE APPROVED BALCONY SCREEN.
2. THE PURCHASER WILL HAVE TO BEAR THE COST OF SUPPLY & INSTALL OF THE BALCONY SCREEN IF THEY WISH TO OPT FOR THE SCREEN.
3. THE PROPOSED BALCONY SHALL BE POROUS ENOUGH TO ALLOW FOR NATURAL VENTILATION WITHIN THE BALCONY AT ALL TIMES EVEN WHEN THE SCREENS ARE FULLY DRAWN CLOSED.
4. TO REFER TO MOCK UP BALCONY SCREEN INSTALLED AT SALES GALLERY.