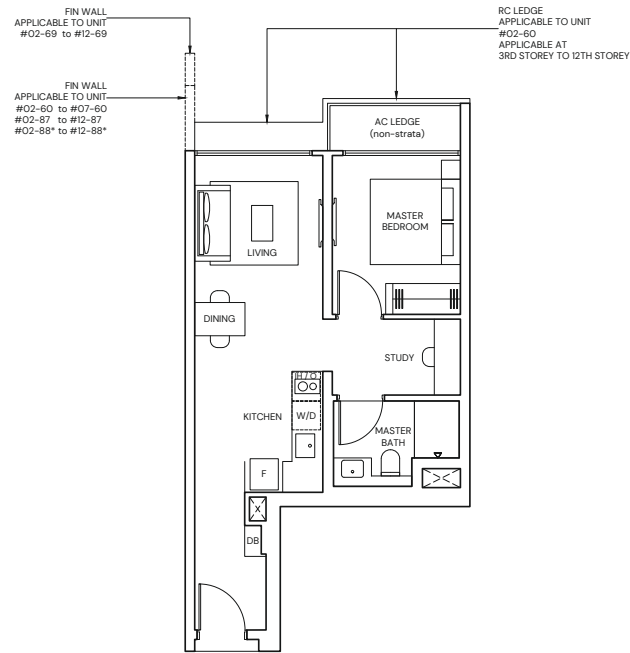


1-BEDROOM + STUDY

TYPE AS1

47sqm / 506 sqft

- BLK 11 #02-60 to #07-60
- BLK 13 #02-69 to #12-69
- BLK 17 #02-87 to #12-87
- BLK 19 #02-88* to #12-88*
- BLK 21 #02-105 to #12-105
- BLK 23 #02-114 to #12-114



* Mirrored Unit



Area includes Private Enclosed Space (PES) or Balcony, where applicable. All AC ledges and RC ledges (non-load bearing) are excluded from strata area. The plans are subjected to change as may be required by relevant authorities. All areas and measurements stated herein as approximate and subject to final survey.

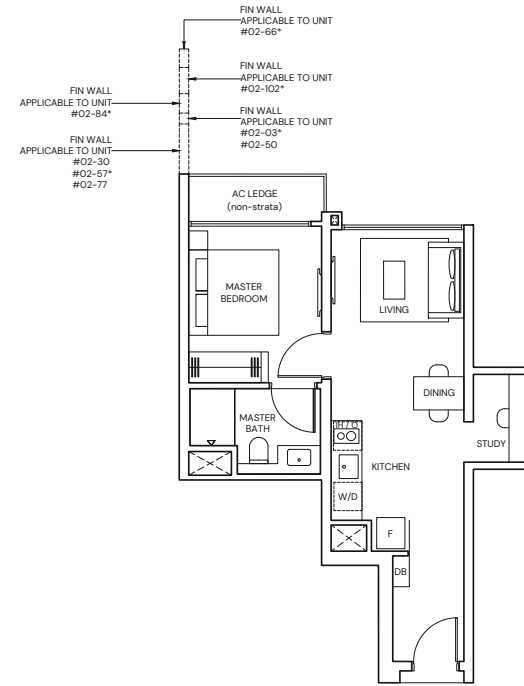


1-BEDROOM + STUDY

TYPE AS2

43 sqm / 463 sqft

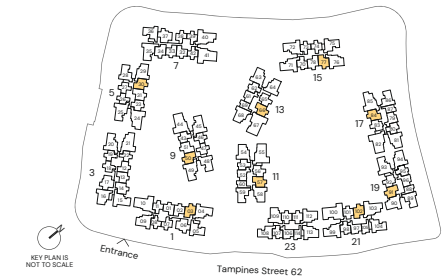
- BLK 1 #02-03*
- BLK 5 #02-30
- BLK 9 #02-50
- BLK 11 #02-57*
- BLK 13 #02-66*
- BLK 15 #02-77
- BLK 17 #02-84*
- BLK 19 #02-91
- BLK 21 #02-102*



* Mirrored Unit

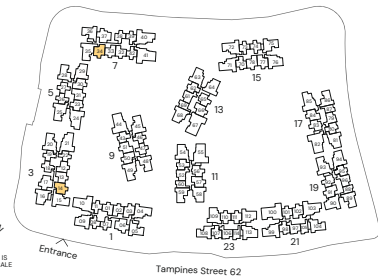
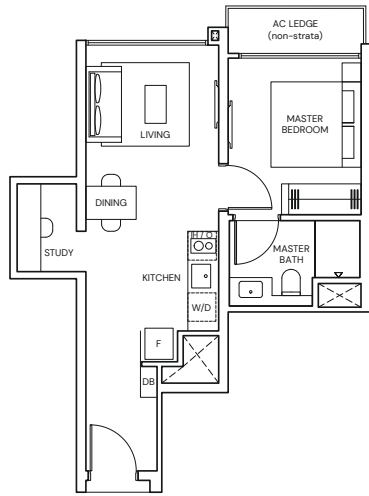


Area includes Private Enclosed Space (PES) or Balcony, where applicable. All AC ledges and RC ledges (non-load bearing) are excluded from strata area. The plans are subjected to change as may be required by relevant authorities. All areas and measurements stated herein as approximate and subject to final survey.



1-BEDROOM + STUDY

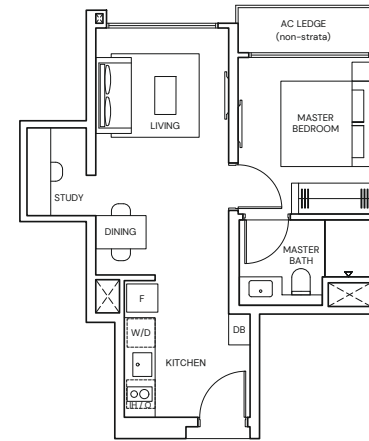
TYPE AS3
 43 sqm / 463 sqft
 BLK 3 #02-14
 BLK 7 #02-34



Area includes Private Enclosed Space (PES) or Balcony, where applicable. All AC ledges and RC ledges (non-load bearing) are excluded from strata area. The plans are subjected to change as may be required by relevant authorities. All areas and measurements stated herein as approximate and subject to final survey.

1-BEDROOM + STUDY

TYPE AS4
 43 sqm / 463sqft
 BLK 23 #02-110



Area includes Private Enclosed Space (PES) or Balcony, where applicable. All AC ledges and RC ledges (non-load bearing) are excluded from strata area. The plans are subjected to change as may be required by relevant authorities. All areas and measurements stated herein as approximate and subject to final survey.

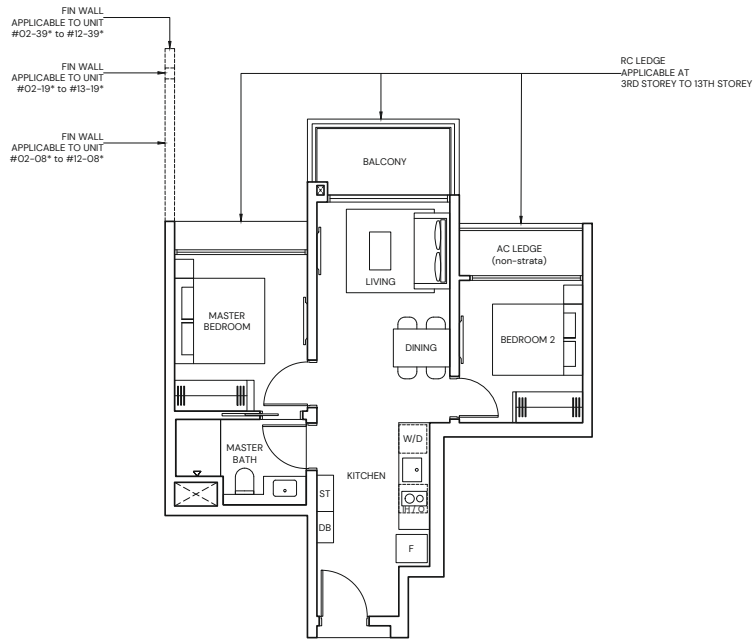
2-BEDROOM

TYPE B1

55 sqm / 592 sqft

BLK 1 #02-07 to #12-07
BLK 1 #02-08* to #12-08*
BLK 3 #02-18 to #13-18

BLK 3 #02-19* to #13-19*
BLK 7 #02-38 to #12-38
BLK 7 #02-39* to #12-39*



* Mirrored Unit



Area includes Private Enclosed Space (PES) or Balcony, where applicable. All AC ledges and RC ledges (non-load bearing) are excluded from strata area. The plans are subjected to change as may be required by relevant authorities. All areas and measurements stated herein as approximate and subject to final survey.



2-BEDROOM

TYPE B2

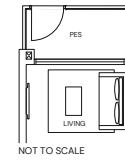
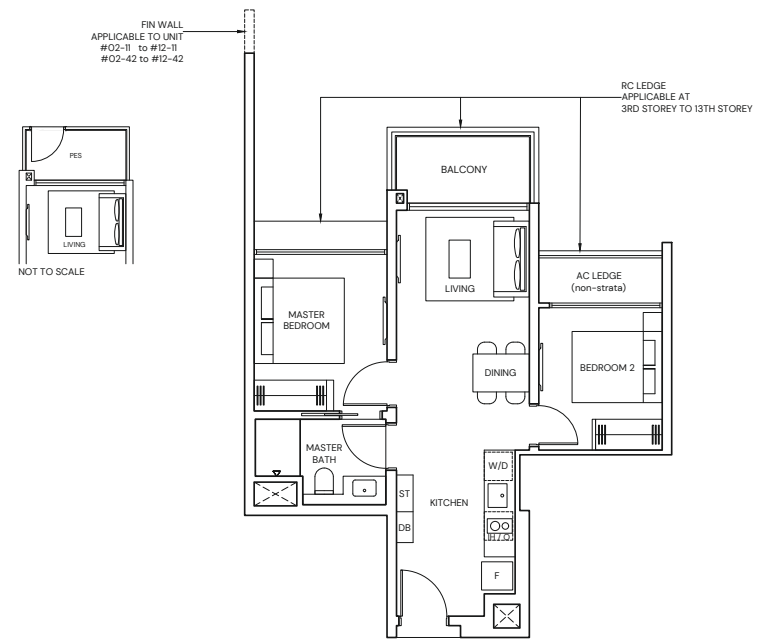
55 sqm / 592sqft

BLK 1 #03-11 to #12-11
BLK 3 #03-22 to #13-22
BLK 7 #03-42 to #12-42

TYPE B2(p)

55 sqm / 592sqft

BLK 1 #02-11
BLK 3 #02-22
BLK 7 #02-42



Area includes Private Enclosed Space (PES) or Balcony, where applicable. All AC ledges and RC ledges (non-load bearing) are excluded from strata area. The plans are subjected to change as may be required by relevant authorities. All areas and measurements stated herein as approximate and subject to final survey.

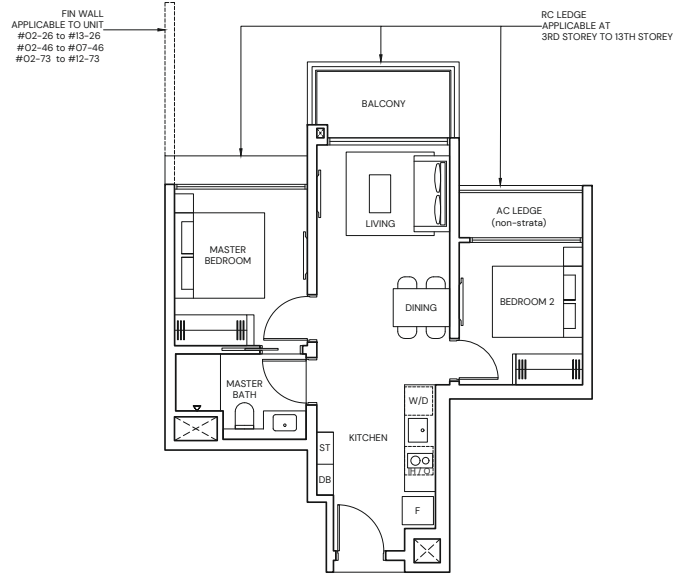


2-BEDROOM

TYPE B3

55 sqm / 592 sqft

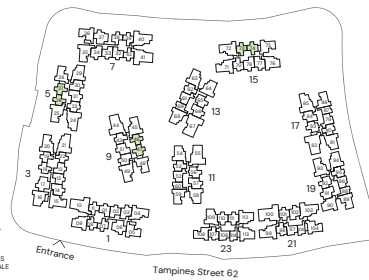
BLK 5 #02-26 to #13-26
BLK 5 #02-27* to #13-27*
BLK 9 #02-46 to #07-46
BLK 9 #02-47* to #07-47*
BLK 15 #02-73 to #12-73
BLK 15 #02-74* to #12-74*



* Mirrored Unit



Area includes Private Enclosed Space (PES) or Balcony, where applicable. All AC ledges and RC ledges (non-load bearing) are excluded from strata area. The plans are subjected to change as may be required by relevant authorities. All areas and measurements stated herein as approximate and subject to final survey.



2-BEDROOM PREMIUM

TYPE BP1

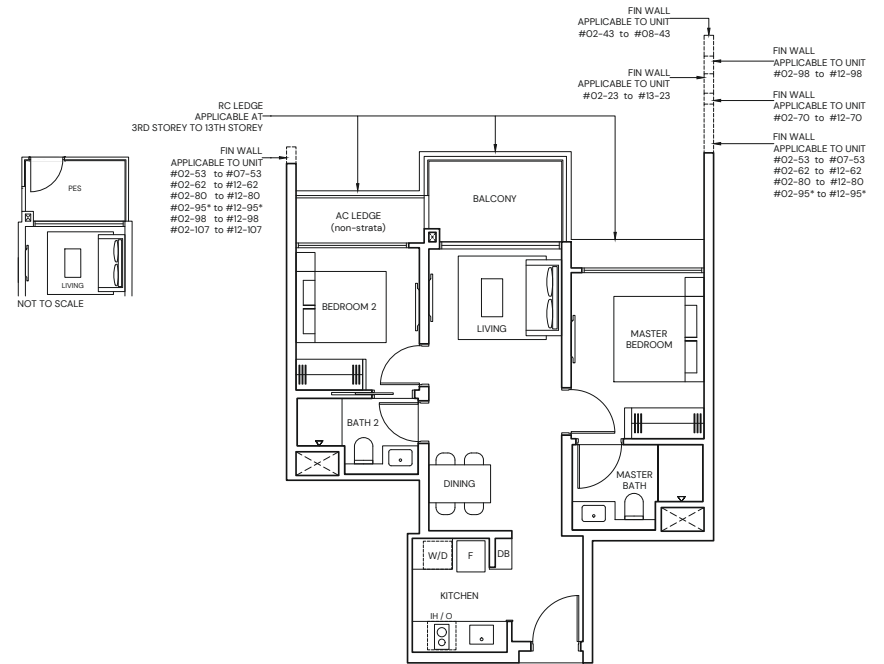
63 sqm / 678 sqft

BLK 5 #03-23 to #13-23
BLK 9 #03-43 to #08-43
BLK 11 #02-53 to #07-53
BLK 13 #02-62 to #12-62
BLK 15 #03-70 to #12-70
BLK 17 #02-80 to #12-80
BLK 19 #02-95* to #12-95*
BLK 21 #02-98 to #12-98
BLK 23 #02-107 to #12-107

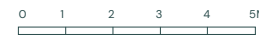
TYPE BP1(p)

63 sqm / 678 sqft

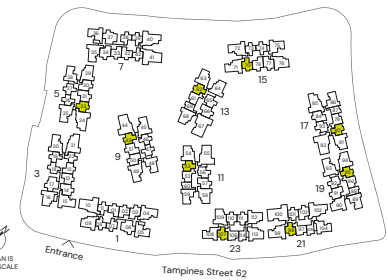
BLK 5 #02-23
BLK 9 #02-43
BLK 15 #02-70



* Mirrored Unit



Area includes Private Enclosed Space (PES) or Balcony, where applicable. All AC ledges and RC ledges (non-load bearing) are excluded from strata area. The plans are subjected to change as may be required by relevant authorities. All areas and measurements stated herein as approximate and subject to final survey.



2-BEDROOM PREMIUM

TYPE BP2

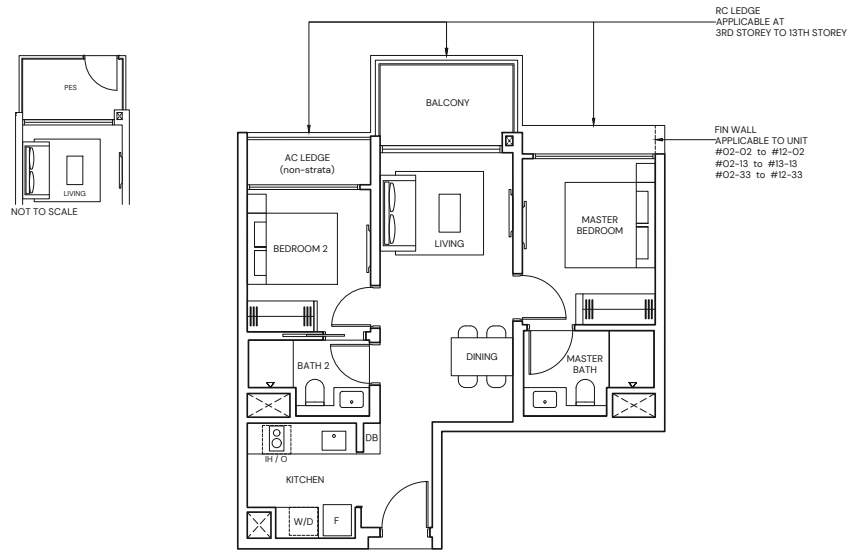
63 sqm / 678 sqft

- BLK 1 #03-01* to #12-01*
- BLK 1 #03-02 to #12-02
- BLK 3 #03-12* to #13-12*
- BLK 3 #03-13 to #13-13
- BLK 7 #03-32* to #12-32*
- BLK 7 #03-33 to #12-33

TYPE BP2(p)

63 sqm / 678 sqft

- BLK 1 #02-01*
- BLK 1 #02-02
- BLK 3 #02-12*
- BLK 3 #02-13
- BLK 7 #02-32*
- BLK 7 #02-33



* Mirrored Unit



Area includes Private Enclosed Space (PES) or Balcony, where applicable. All AC ledges and RC ledges (non-load bearing) are excluded from strata area. The plans are subjected to change as may be required by relevant authorities. All areas and measurements stated herein as approximate and subject to final survey.



2-BEDROOM PREMIUM

TYPE BP3

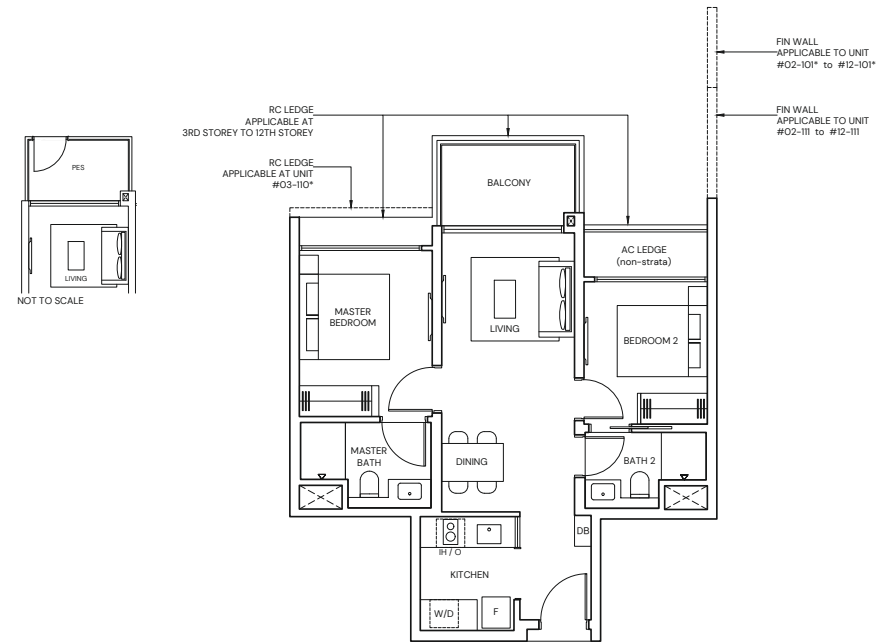
63 sqm / 678 sqft

- BLK 21 #03-101* to #12-101*
- BLK 23 #03-110* to #12-110*
- BLK 23 #03-111 to #12-111

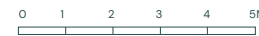
TYPE BP3(p)

63 sqm / 678 sqft

- BLK 21 #02-101*
- BLK 23 #02-111



* Mirrored Unit



Area includes Private Enclosed Space (PES) or Balcony, where applicable. All AC ledges and RC ledges (non-load bearing) are excluded from strata area. The plans are subjected to change as may be required by relevant authorities. All areas and measurements stated herein as approximate and subject to final survey.



2-BEDROOM PREMIUM

TYPE BP4

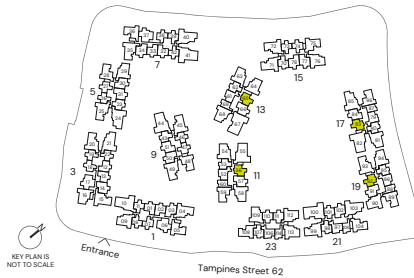
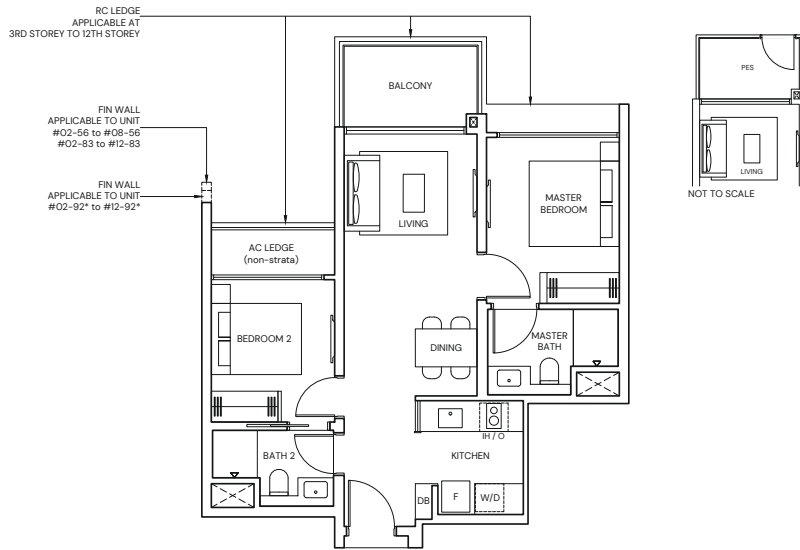
63 sqm / 678 sqft

BLK 11 #03-56 to #08-56
 BLK 13 #03-65 to #12-65
 BLK 17 #03-83 to #12-83
 BLK 19 #03-92* to #12-92*

TYPE BP4(p)

63 sqm / 678 sqft

BLK 11 #02-56
 BLK 13 #02-65
 BLK 17 #02-83
 BLK 19 #02-92*



* Mirrored Unit



Area includes Private Enclosed Space (PES) or Balcony, where applicable. All AC ledges and RC ledges (non-load bearing) are excluded from strata area. The plans are subjected to change as may be required by relevant authorities. All areas and measurements stated herein as approximate and subject to final survey.

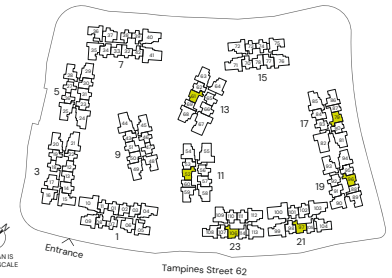
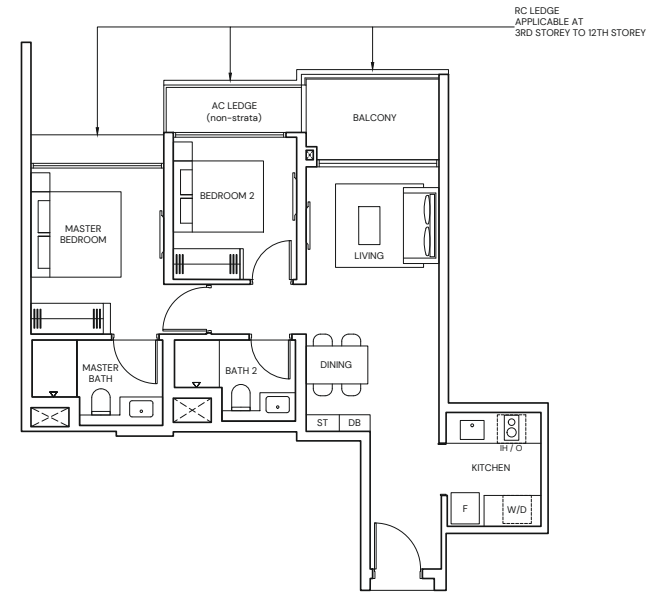
2-BEDROOM PREMIUM

TYPE BP5

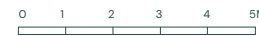
67 sqm / 721 sqft

BLK 11 #02-52 to #07-52
 BLK 13 #02-61 to #12-61
 BLK 17 #02-79 to #12-79

BLK 19 #02-96* to #12-96*
 BLK 21 #02-97 to #12-97
 BLK 23 #02-106 to #12-106



* Mirrored Unit



Area includes Private Enclosed Space (PES) or Balcony, where applicable. All AC ledges and RC ledges (non-load bearing) are excluded from strata area. The plans are subjected to change as may be required by relevant authorities. All areas and measurements stated herein as approximate and subject to final survey.

2-BEDROOM PREMIUM + STUDY

TYPE BPS1

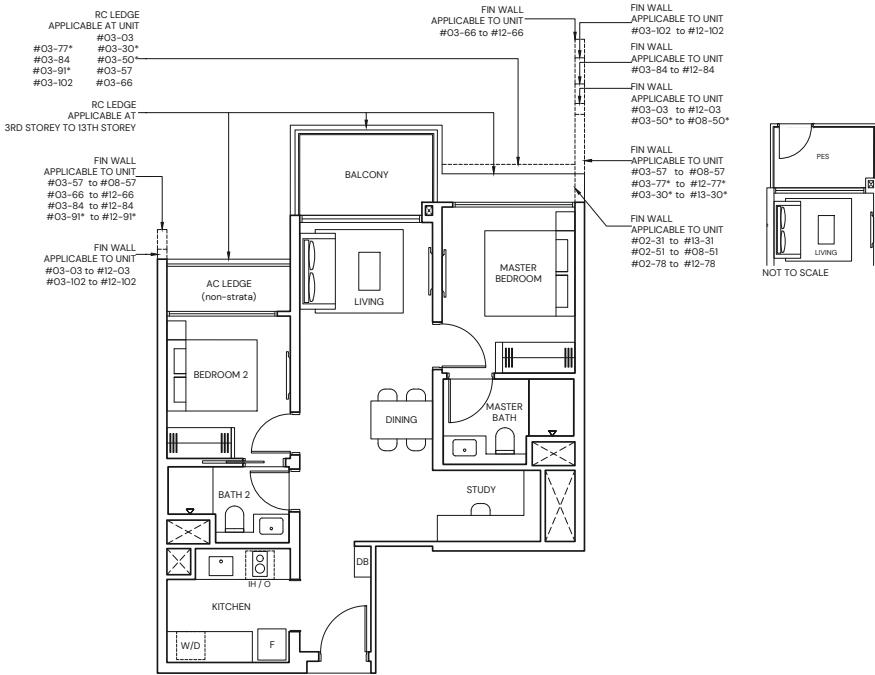
71 sqm / 764 sqft

- | | | |
|--------------------------|---------------------------|---------------------------|
| BLK 1 #03-03 to #12-03 | BLK 9 #03-51 to #08-51 | BLK 15 #03-78 to #12-78 |
| BLK 5 #03-30* to #13-30* | BLK 11 #03-57 to #08-57 | BLK 17 #03-84 to #12-84 |
| BLK 5 #03-31 to #13-31 | BLK 13 #03-66 to #12-66 | BLK 19 #03-91* to #12-91* |
| BLK 9 #03-50* to #08-50* | BLK 15 #03-77* to #12-77* | BLK 21 #03-102 to #12-102 |

TYPE BPS1(p)

71 sqm / 764 sqft

- BLK 5 #02-31
BLK 9 #02-51
BLK 15 #02-78



* Mirrored Unit



Area includes Private Enclosed Space (PES) or Balcony, where applicable. All AC ledges and RC ledges (non-load bearing) are excluded from strata area. The plans are subjected to change as may be required by relevant authorities. All areas and measurements stated herein as approximate and subject to final survey.

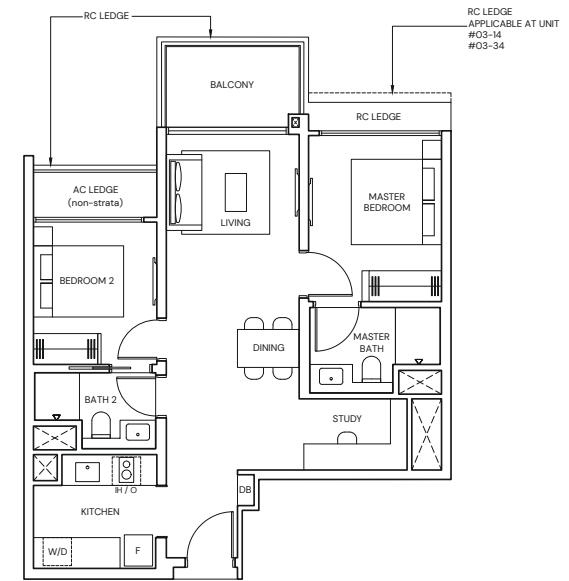


2-BEDROOM PREMIUM + STUDY

TYPE BPS2

71 sqm / 764 sqft

- BLK 3 #03-14 to #13-14
BLK 7 #03-34 to #12-34



Area includes Private Enclosed Space (PES) or Balcony, where applicable. All AC ledges and RC ledges (non-load bearing) are excluded from strata area. The plans are subjected to change as may be required by relevant authorities. All areas and measurements stated herein as approximate and subject to final survey.

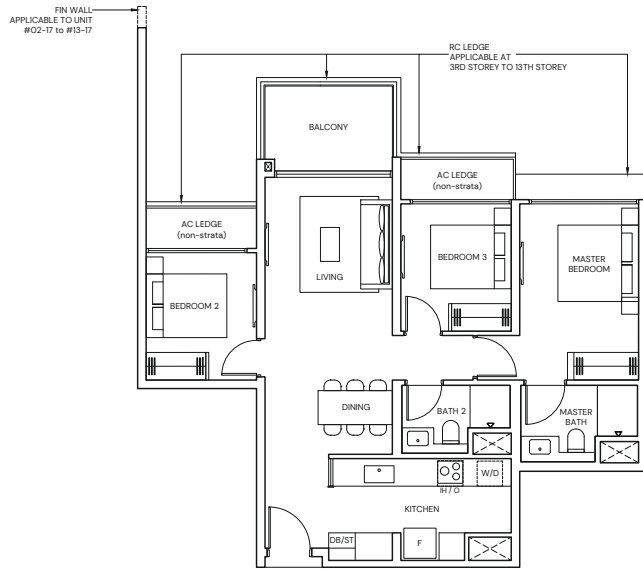


3-BEDROOM

TYPE C1

86 sqm / 926 sqft

BLK 1 #02-06 to #12-06
 BLK 3 #02-17 to #13-17
 BLK 7 #02-37 to #12-37



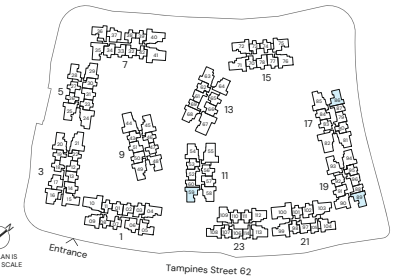
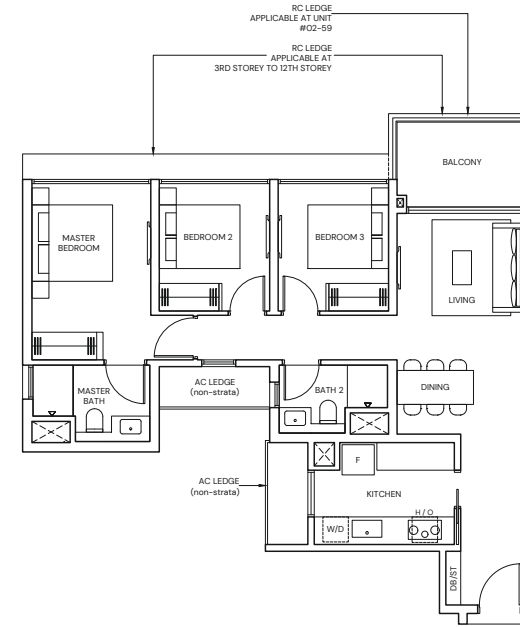
Area includes Private Enclosed Space (PES) or Balcony, where applicable. All AC ledges and RC ledges (non-load bearing) are excluded from strata area. The plans are subjected to change as may be required by relevant authorities. All areas and measurements stated herein as approximate and subject to final survey.

3-BEDROOM

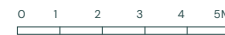
TYPE C2

87 sqm / 936 sqft

BLK 11 #02-59 to #07-59
 BLK 17 #02-86 to #12-86
 BLK 19 #02-89* to #12-89*



* Mirrored Unit



Area includes Private Enclosed Space (PES) or Balcony, where applicable. All AC ledges and RC ledges (non-load bearing) are excluded from strata area. The plans are subjected to change as may be required by relevant authorities. All areas and measurements stated herein as approximate and subject to final survey.

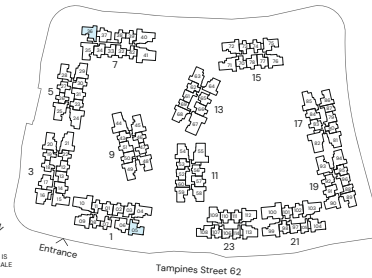
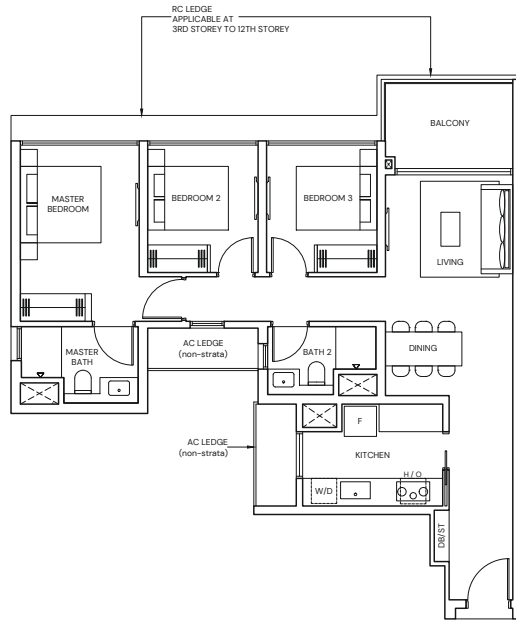
3-BEDROOM

TYPE C3

88 sqm / 947 sqft

BLK 1 #02-05 to #12-05

BLK 7 #02-36 to #12-36



Area includes Private Enclosed Space (PES) or Balcony, where applicable. All AC ledges and RC ledges (non-load bearing) are excluded from strata area. The plans are subjected to change as may be required by relevant authorities. All areas and measurements stated herein as approximate and subject to final survey.

KEY PLANS NOT TO SCALE

3-BEDROOM

TYPE C4

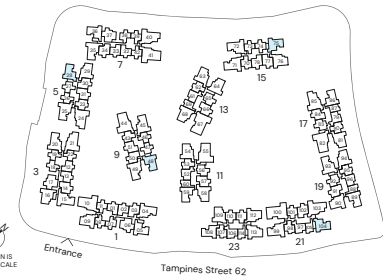
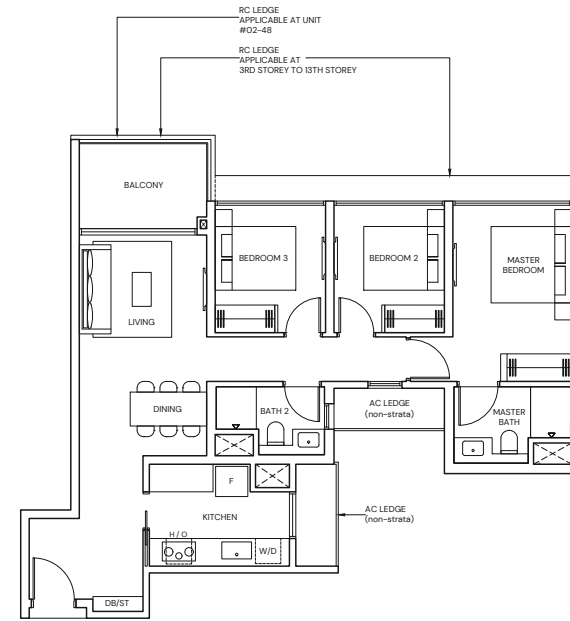
88 sqm / 947 sqft

BLK 5 #02-28 to #13-28

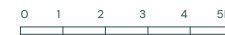
BLK 9 #02-48 to #07-48

BLK 15 #02-75 to #12-75

BLK 21 #02-104* to #12-104*



* Mirrored Unit



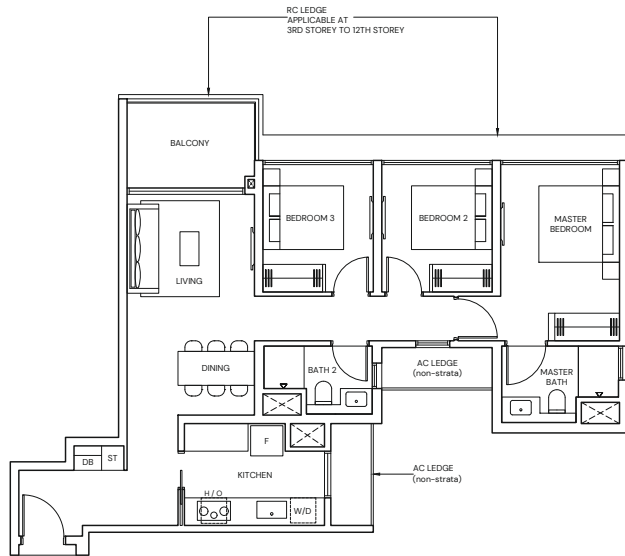
Area includes Private Enclosed Space (PES) or Balcony, where applicable. All AC ledges and RC ledges (non-load bearing) are excluded from strata area. The plans are subjected to change as may be required by relevant authorities. All areas and measurements stated herein as approximate and subject to final survey.

KEY PLANS NOT TO SCALE

3-BEDROOM

TYPE C5
88 sqm / 947 sqft

BLK 23 #02-108 to #12-108



Area includes Private Enclosed Space (PES) or Balcony, where applicable. All AC ledges and RC ledges (non-load bearing) are excluded from strata area. The plans are subjected to change as may be required by relevant authorities. All areas and measurements stated herein as approximate and subject to final survey.

KEY PLAN IS NOT TO SCALE

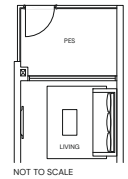
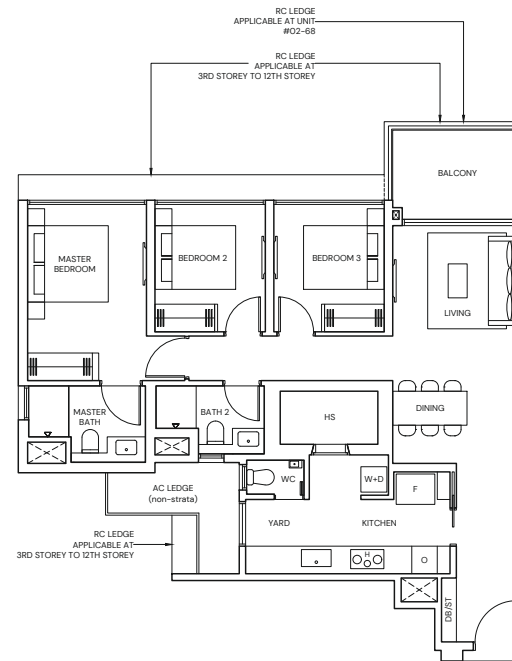
3-BEDROOM PREMIUM

TYPE CP1
99 sqm / 1066 sqft

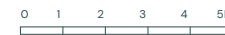
BLK 13 #03-64 to #12-64
BLK 13 #02-68 to #12-68

TYPE CP1(p)
99 sqm / 1066 sqft

BLK 13 #02-64



NOT TO SCALE



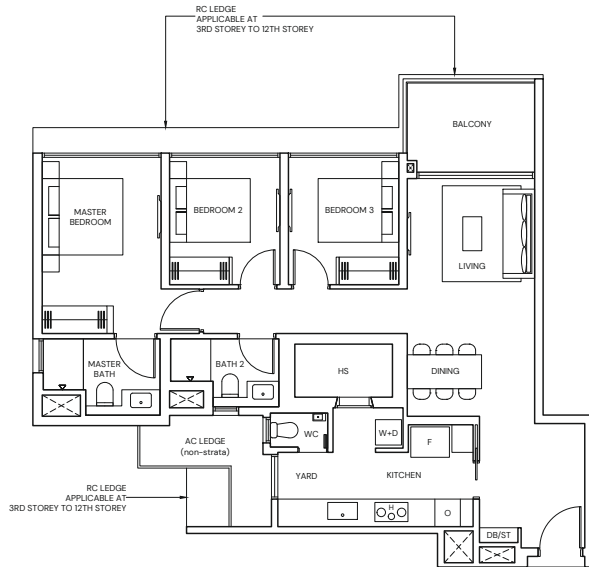
Area includes Private Enclosed Space (PES) or Balcony, where applicable. All AC ledges and RC ledges (non-load bearing) are excluded from strata area. The plans are subjected to change as may be required by relevant authorities. All areas and measurements stated herein as approximate and subject to final survey.

KEY PLAN IS NOT TO SCALE

3-BEDROOM PREMIUM

TYPE CP4
99 sqm / 1066 sqft

BLK 23 #02-113 to #12-113



Area includes Private Enclosed Space (PES) or Balcony, where applicable. All AC ledges and RC ledges (non-load bearing) are excluded from strata area. The plans are subjected to change as may be required by relevant authorities. All areas and measurements stated herein as approximate and subject to final survey.



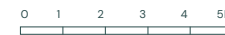
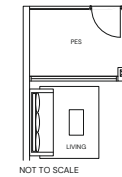
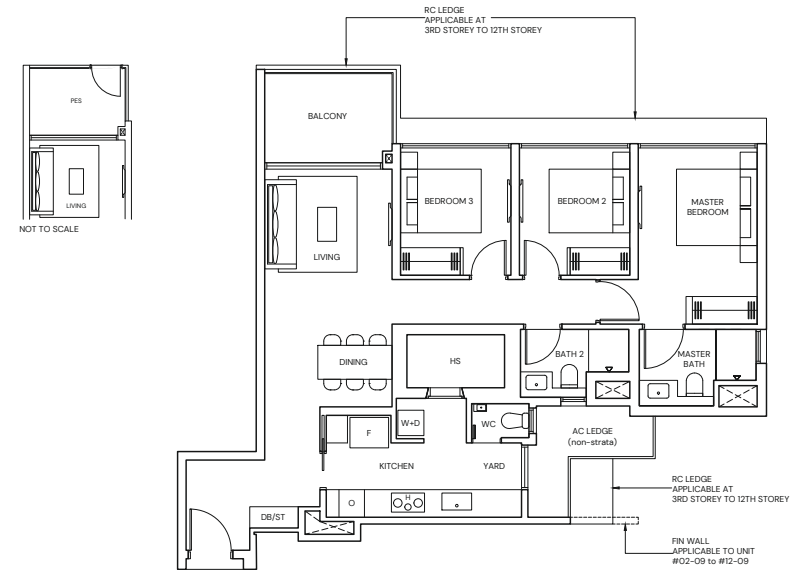
3-BEDROOM PREMIUM

TYPE CP5
99 sqm / 1066 sqft

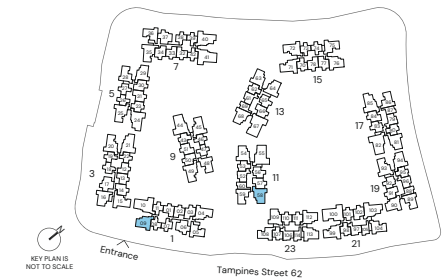
BLK 1 #02-09 to #12-09
BLK 11 #03-58 to #08-58

TYPE CP5(p)
99 sqm / 1066 sqft

BLK 11 #02-58



Area includes Private Enclosed Space (PES) or Balcony, where applicable. All AC ledges and RC ledges (non-load bearing) are excluded from strata area. The plans are subjected to change as may be required by relevant authorities. All areas and measurements stated herein as approximate and subject to final survey.



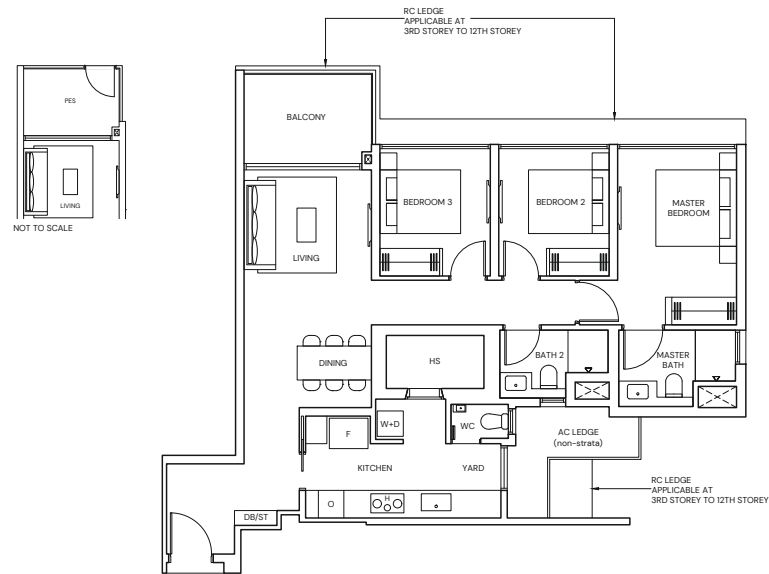
3-BEDROOM PREMIUM

TYPE CP6
99 sqm / 1066 sqft

BLK 23 #03-112 to #12-112

TYPE CP6(p)
99 sqm / 1066 sqft

BLK 23 #02-112



Area includes Private Enclosed Space (PES) or Balcony, where applicable. All AC ledges and RC ledges (non-load bearing) are excluded from strata area. The plans are subjected to change as may be required by relevant authorities. All areas and measurements stated herein as approximate and subject to final survey.



3-BEDROOM PREMIUM

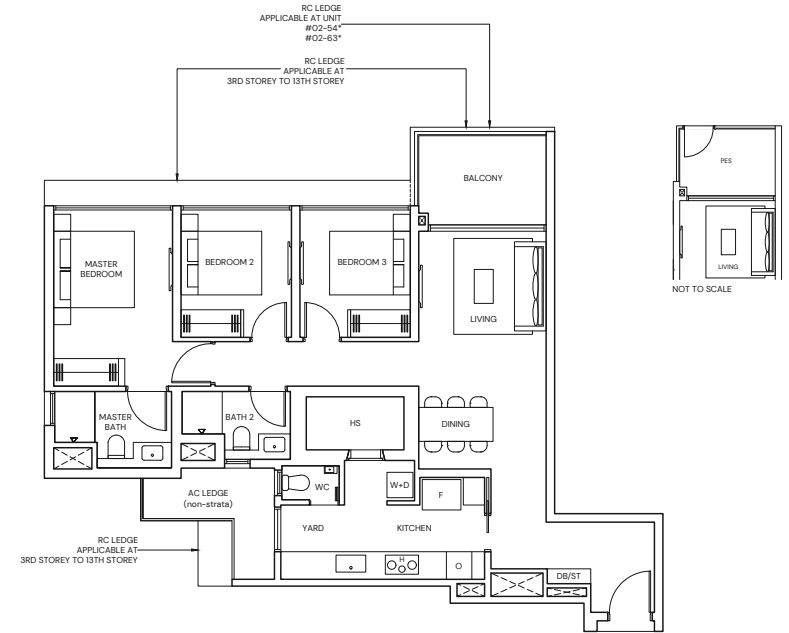
TYPE CP7
100 sqm / 1076 sqft

BLK 5 #03-29 to #13-29
BLK 11 #02-54* to #07-54*
BLK 13 #02-63* to #12-63*

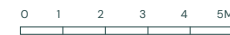
BLK 15 #03-76 to #12-76
BLK 17 #03-81* to #12-81*
BLK 19 #02-94 to #12-94

TYPE CP7(p)
100 sqm / 1076 sqft

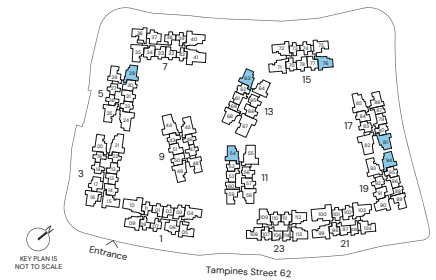
BLK 5 #02-29
BLK 15 #02-76



*** Mirrored Unit**



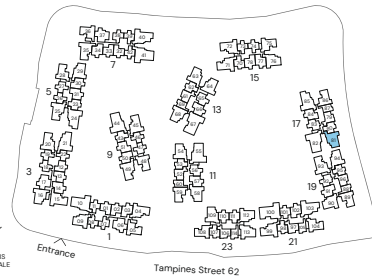
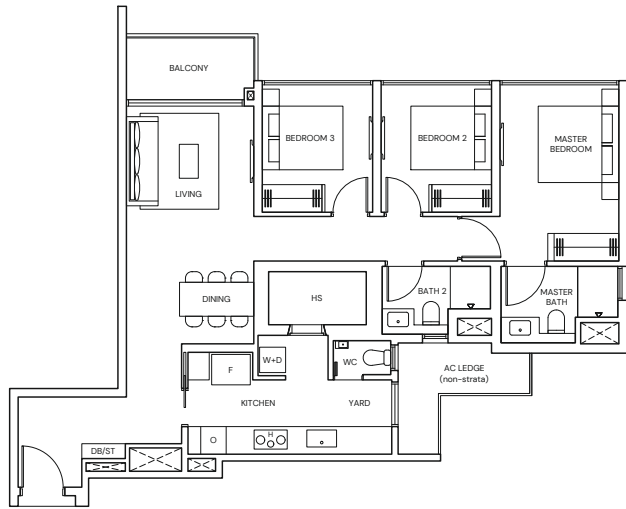
Area includes Private Enclosed Space (PES) or Balcony, where applicable. All AC ledges and RC ledges (non-load bearing) are excluded from strata area. The plans are subjected to change as may be required by relevant authorities. All areas and measurements stated herein as approximate and subject to final survey.



3-BEDROOM PREMIUM

TYPE CP8
98 sqm / 1055 sqft

BLK 17 #02-81



Area includes Private Enclosed Space (PES) or Balcony, where applicable. All AC ledges and RC ledges (non-load bearing) are excluded from strata area. The plans are subjected to change as may be required by relevant authorities. All areas and measurements stated herein as approximate and subject to final survey.

KEY PLAN IS NOT TO SCALE

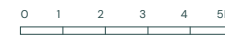
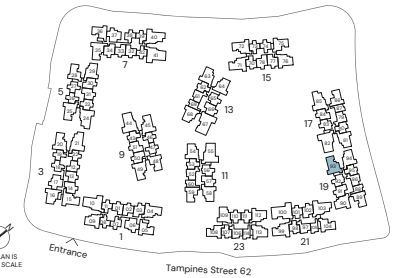
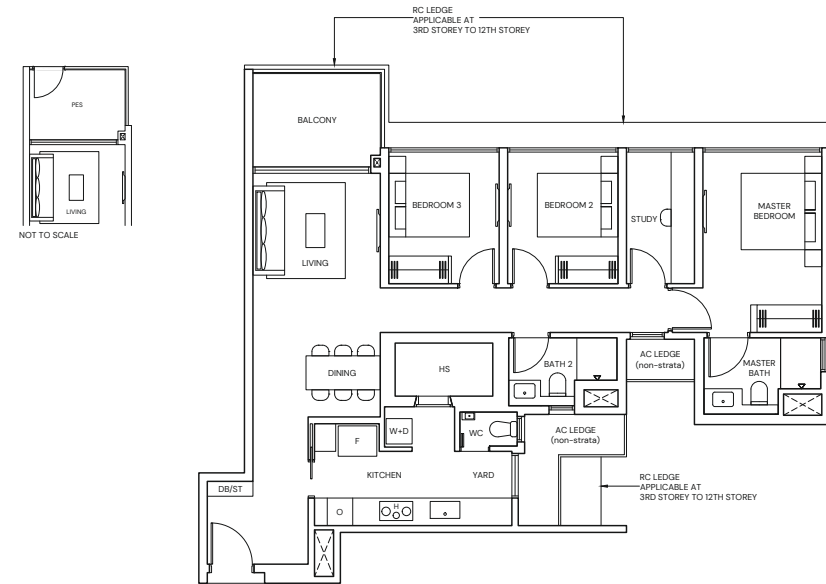
3-BEDROOM PREMIUM + STUDY

TYPE CPS1
108 sqm / 1163 sqft

BLK 19 #03-93 to #12-93

TYPE CPS1(p)
108 sqm / 1163 sqft

BLK 19 #02-93



Area includes Private Enclosed Space (PES) or Balcony, where applicable. All AC ledges and RC ledges (non-load bearing) are excluded from strata area. The plans are subjected to change as may be required by relevant authorities. All areas and measurements stated herein as approximate and subject to final survey.

KEY PLAN IS NOT TO SCALE

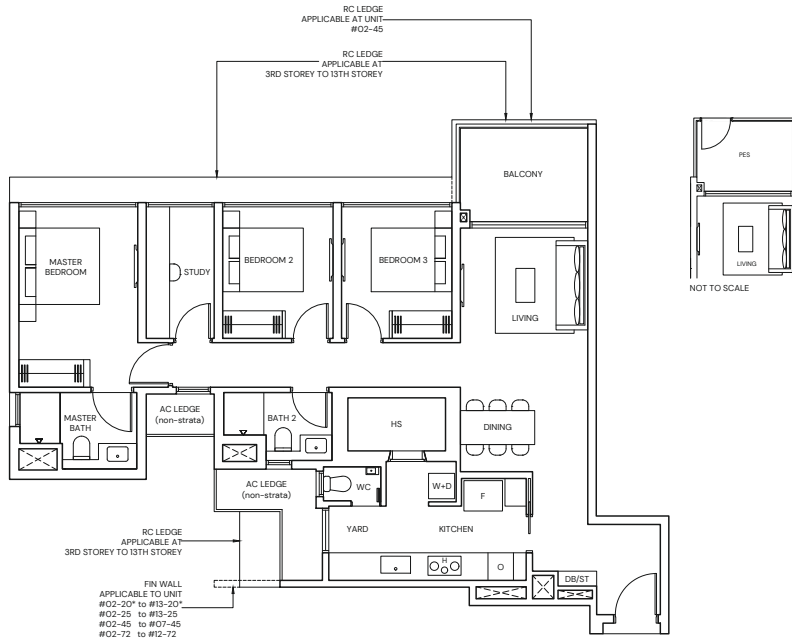
3-BEDROOM PREMIUM + STUDY

TYPE CPS2
108 sqm / 1163 sqft

BLK 1 #03-04* to #12-04*
BLK 3 #02-20* to #13-20*
BLK 5 #02-25 to #13-25
BLK 9 #02-45 to #07-45
BLK 15 #02-72 to #12-72

TYPE CPS2(p)
108 sqm / 1163 sqft

BLK 1 #02-04*



* Mirrored Unit



Area includes Private Enclosed Space (PES) or Balcony, where applicable. All AC ledges and RC ledges (non-load bearing) are excluded from strata area. The plans are subjected to change as may be required by relevant authorities. All areas and measurements stated herein as approximate and subject to final survey.



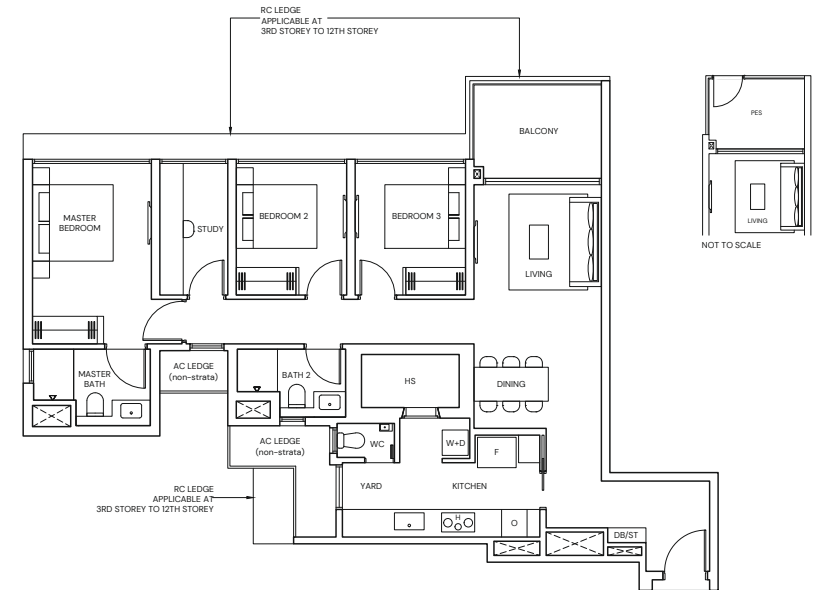
3-BEDROOM PREMIUM + STUDY

TYPE CPS3
109 sqm / 1173 sqft

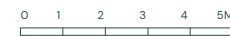
BLK 9 #03-49 to #08-49
BLK 15 #03-71* to #12-71*

TYPE CPS3(p)
109 sqm / 1173 sqft

BLK 9 #02-49
BLK 15 #02-71*



* Mirrored Unit



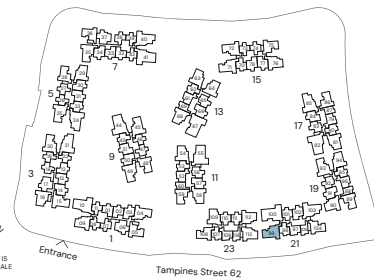
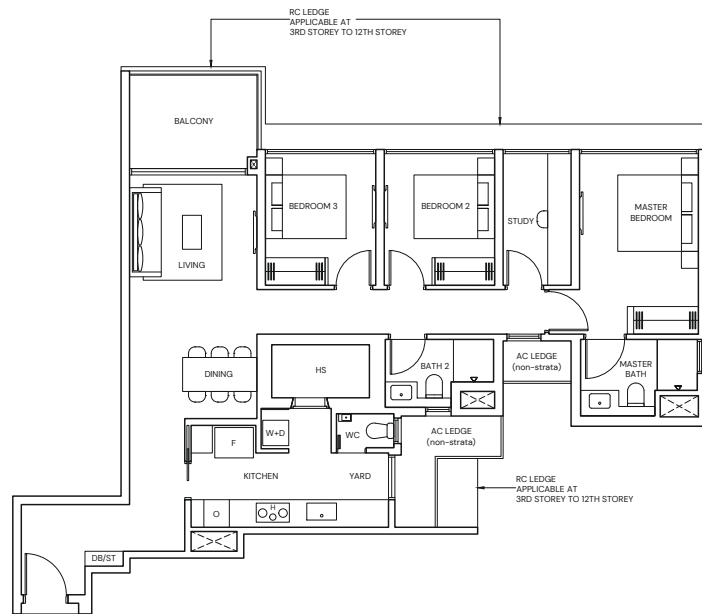
Area includes Private Enclosed Space (PES) or Balcony, where applicable. All AC ledges and RC ledges (non-load bearing) are excluded from strata area. The plans are subjected to change as may be required by relevant authorities. All areas and measurements stated herein as approximate and subject to final survey.



3-BEDROOM PREMIUM + STUDY

TYPE CPS4
110 sqm / 1184 sqft

BLK 21 #02-99 to #12-99



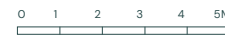
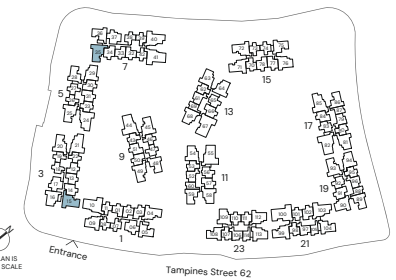
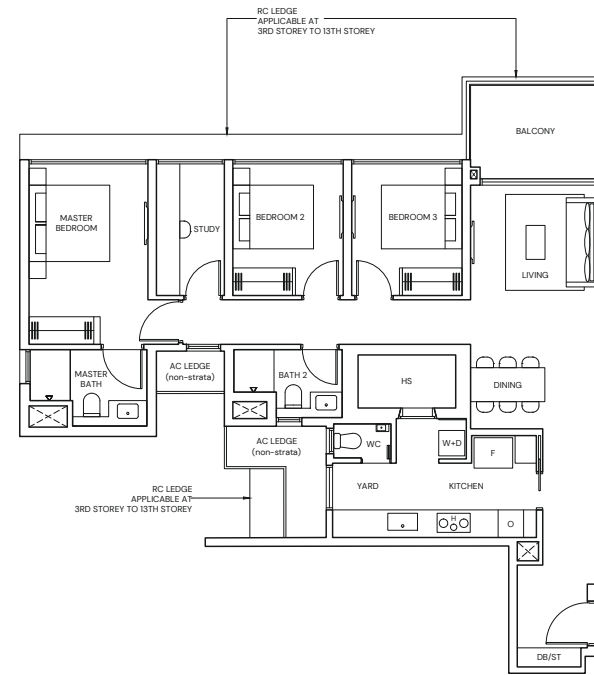
Area includes Private Enclosed Space (PES) or Balcony, where applicable. All AC ledges and RC ledges (non-load bearing) are excluded from strata area. The plans are subjected to change as may be required by relevant authorities. All areas and measurements stated herein as approximate and subject to final survey.

KEY PLAN IS NOT TO SCALE

3-BEDROOM PREMIUM + STUDY

TYPE CPS5
110 sqm / 1184 sqft

BLK 3 #02-15 to #13-15
BLK 7 #02-35 to #12-35



Area includes Private Enclosed Space (PES) or Balcony, where applicable. All AC ledges and RC ledges (non-load bearing) are excluded from strata area. The plans are subjected to change as may be required by relevant authorities. All areas and measurements stated herein as approximate and subject to final survey.

KEY PLAN IS NOT TO SCALE

NOT FOR CIRCULATION

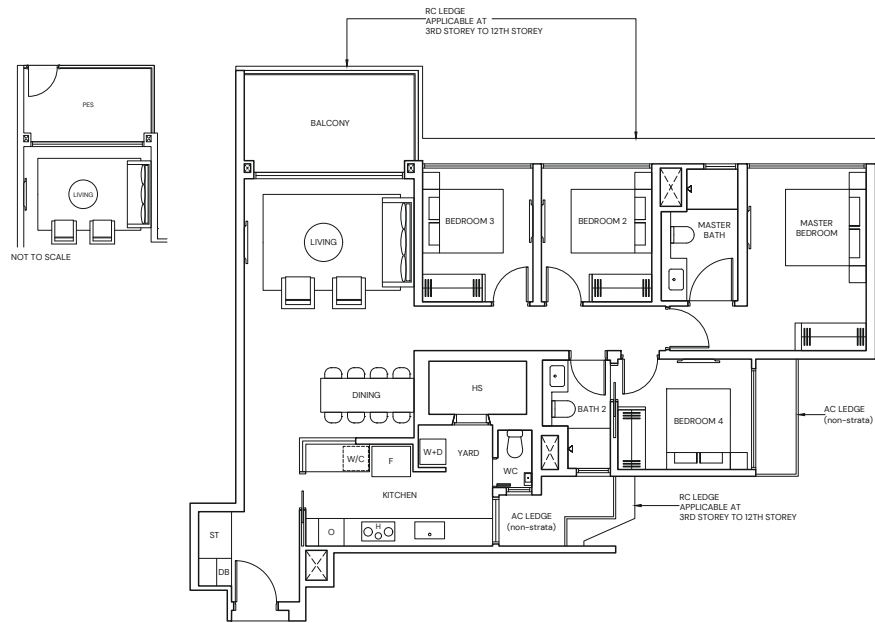
4-BEDROOM

TYPE D1
124 sqm / 1335 sqft

BLK 21 #03-103 to #12-103

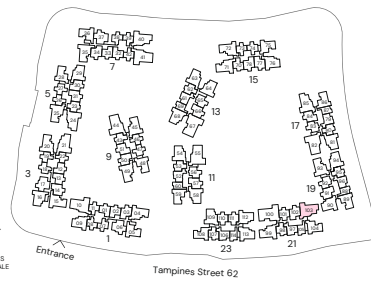
TYPE D1(p)
124 sqm / 1335 sqft

BLK 21 #02-103



Area includes Private Enclosed Space (PES) or Balcony, where applicable. All AC ledges and RC ledges (non-load bearing) are excluded from strata area. The plans are subjected to change as may be required by relevant authorities. All areas and measurements stated herein as approximate and subject to final survey.

KEY FRAMES
NOT TO SCALE



NOT FOR CIRCULATION

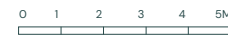
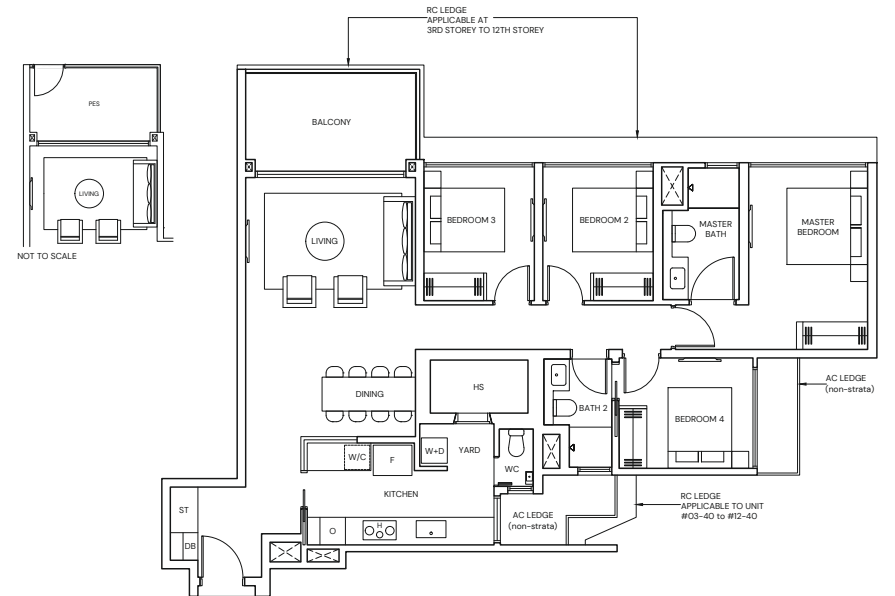
4-BEDROOM

TYPE D2
124 sqm / 1335 sqft

BLK 7 #02-40 to #12-40
BLK 17 #03-85 to #12-85

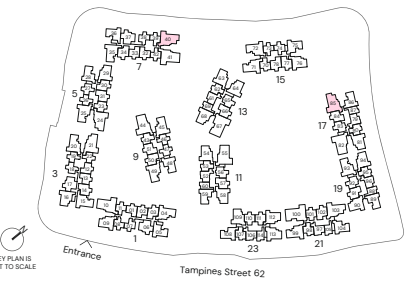
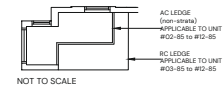
TYPE D2(p)
124 sqm / 1335 sqft

BLK 17 #02-85



Area includes Private Enclosed Space (PES) or Balcony, where applicable. All AC ledges and RC ledges (non-load bearing) are excluded from strata area. The plans are subjected to change as may be required by relevant authorities. All areas and measurements stated herein as approximate and subject to final survey.

KEY FRAMES
NOT TO SCALE



NOT FOR CIRCULATION

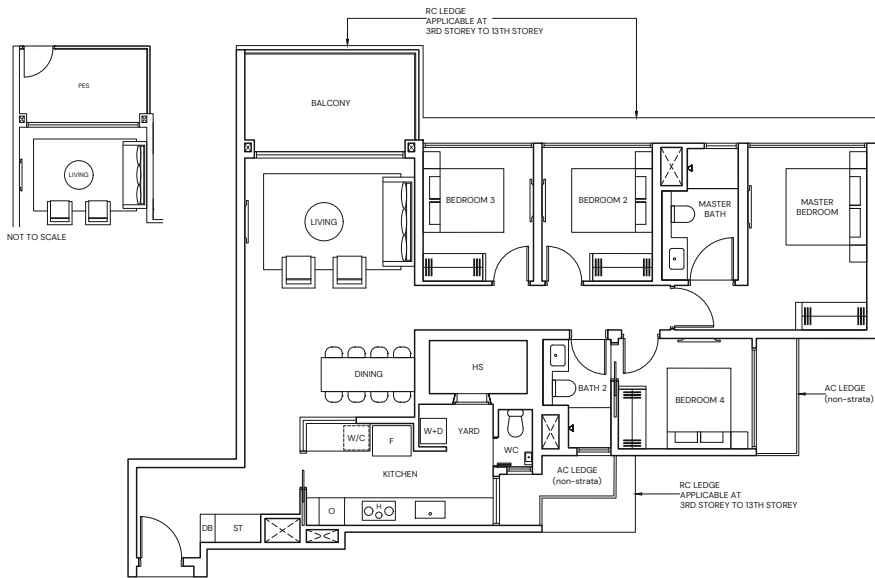
4-BEDROOM

TYPE D3
125 sqm / 1345 sqft

TYPE D3(p)
125 sqm / 1345 sqft

BLK 5 #03-24 to #13-24

BLK 5 #02-24



NOT TO SCALE

NOT TO SCALE



Area includes Private Enclosed Space (PES) or Balcony, where applicable. All AC ledges and RC ledges (non-load bearing) are excluded from strata area. The plans are subjected to change as may be required by relevant authorities. All areas and measurements stated herein as approximate and subject to final survey.



KEY FRAMES
NOT TO SCALE

NOT FOR CIRCULATION

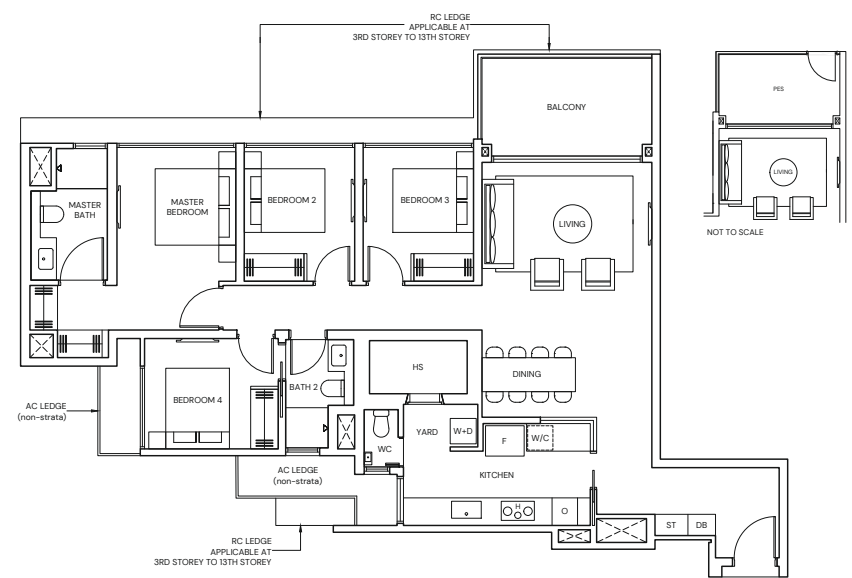
4-BEDROOM

TYPE D4
126 sqm / 1356 sqft

TYPE D4(p)
126 sqm / 1356 sqft

BLK 3 #03-21 to #13-21

BLK 3 #02-21



NOT TO SCALE

NOT TO SCALE



Area includes Private Enclosed Space (PES) or Balcony, where applicable. All AC ledges and RC ledges (non-load bearing) are excluded from strata area. The plans are subjected to change as may be required by relevant authorities. All areas and measurements stated herein as approximate and subject to final survey.



KEY FRAMES
NOT TO SCALE

4-BEDROOM PREMIUM

TYPE DP1

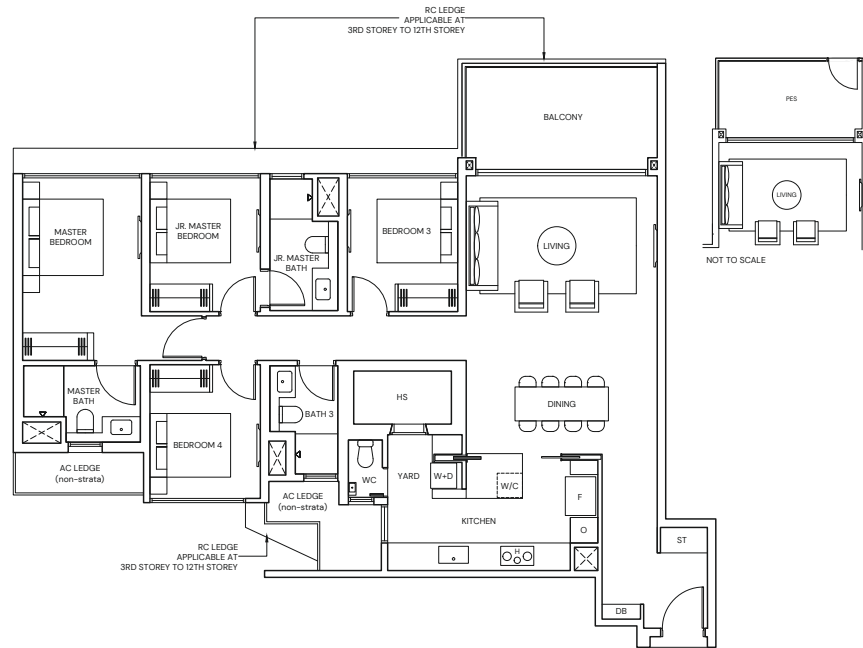
138 sqm / 1485 sqft

BLK 11 #03-55 to #08-55
BLK 17 #03-82 to #12-82

TYPE DP1(p)

138 sqm / 1485 sqft

BLK 11 #02-55
BLK 17 #02-82



Area includes Private Enclosed Space (PES) or Balcony, where applicable. All AC ledges and RC ledges (non-load bearing) are excluded from strata area. The plans are subjected to change as may be required by relevant authorities. All areas and measurements stated herein as approximate and subject to final survey.

4-BEDROOM PREMIUM

TYPE DP2

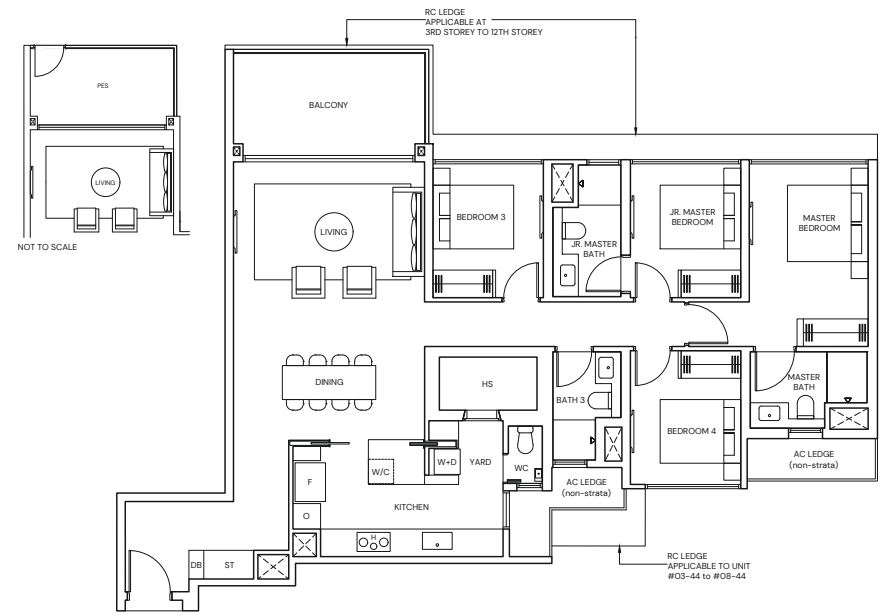
139 sqm / 1496 sqft

BLK 1 #03-10* to #12-10*
BLK 7 #03-41* to #12-41*
BLK 9 #03-44 to #08-44

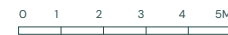
TYPE DP2(p)

139 sqm / 1496 sqft

BLK 1 #02-10*
BLK 7 #02-41*
BLK 9 #02-44



* Mirrored Unit



Area includes Private Enclosed Space (PES) or Balcony, where applicable. All AC ledges and RC ledges (non-load bearing) are excluded from strata area. The plans are subjected to change as may be required by relevant authorities. All areas and measurements stated herein as approximate and subject to final survey.

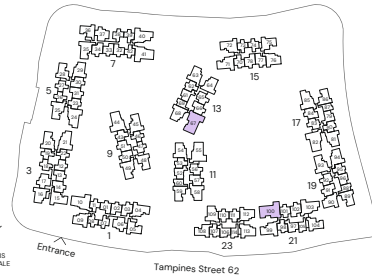
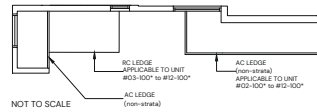
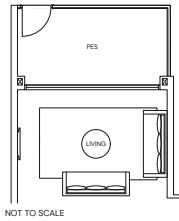
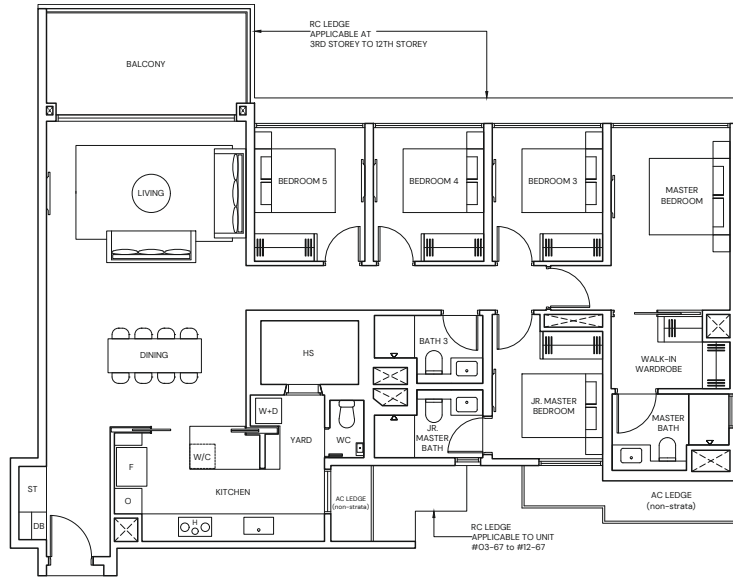
5-BEDROOM PREMIUM

TYPE E1
156 sqm / 1679 sqft

TYPE E1(p)
156 sqm / 1679 sqft

BLK 13 #03-67 to #12-67
BLK 21 #03-100* to #12-100*

BLK 13 #02-67
BLK 21 #02-100*



* Mirrored Unit



Area includes Private Enclosed Space (PES) or Balcony, where applicable. All AC ledges and RC ledges (non-load bearing) are excluded from strata area. The plans are subjected to change as may be required by relevant authorities. All areas and measurements stated herein are approximate and subject to final survey.