

# SO CONNECTED CENTRAL CONVENIENT



## 700m radius

Dhoby Ghaut, Bencoolen, Rochor and Bras Basah MRT stations



## Minutes to educational institutions

SMU, SOTA, NAFA, LASALLE, University of the Arts Singapore (UAS), Anglo-Chinese School (Junior)



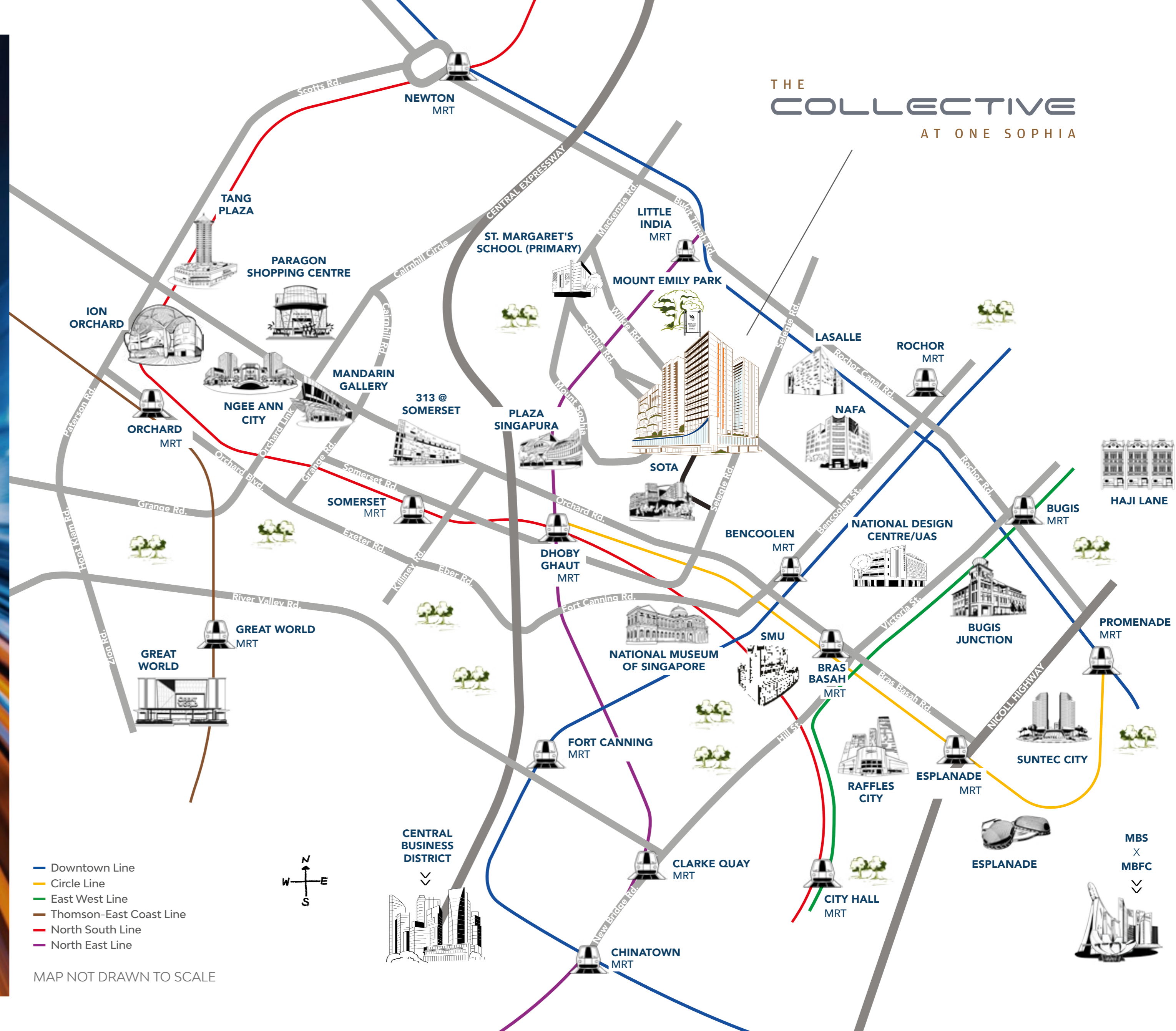
## Walking distance to Orchard Road

to Orchard Road



## Proximity to Raffles Place, City Hall, Marina Bay Sands

to Raffles Place, City Hall, Marina Bay Sands



# ALL THE RIGHT CONNECTIONS

THE  
**COLLECTIVE**  
AT ONE SOPHIA

CENTRAL BUSINESS DISTRICT

BUGIS JUNCTION TOWERS

NATIONAL GALLERY OF SINGAPORE

CHIJMES

CHINATOWN

FORT CANNING

NATIONAL MUSEUM OF SINGAPORE

DHOBY GHAUT MRT

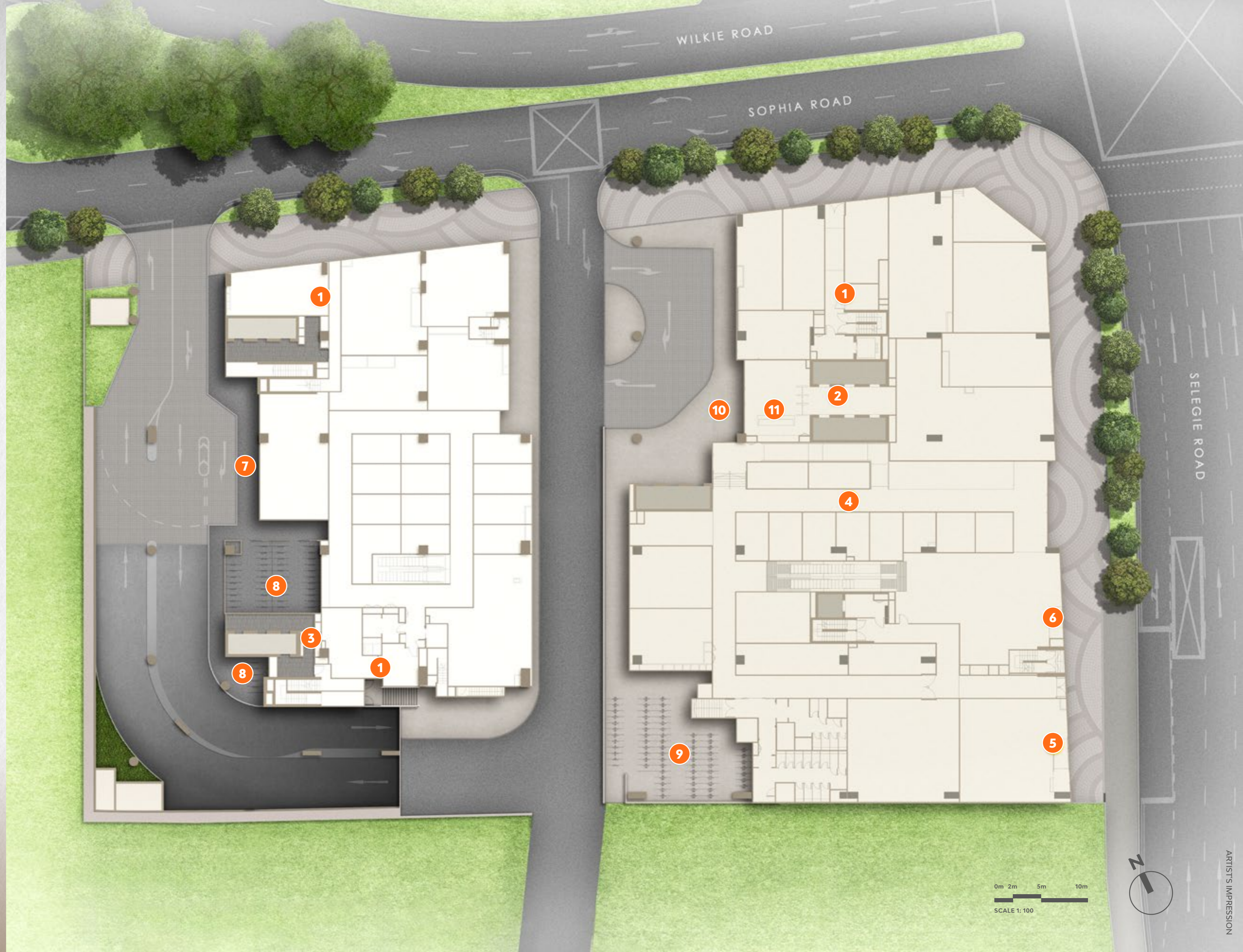
ORCHARD ROAD



# SITE PLAN

## 1<sup>st</sup> Storey Plan

- 1 Letterbox Station (Basement 1 & 3)
- 2 Management Office (Basement 1, 2, 3)
- 3 Guardhouse (Basement 2)
- 4 Bin Centre (Basement 2)
- 5 Loading/Unloading Bay (Basement 2)
- 6 Electrical Substation (Basement 1)
- 7 Residential Drop-off
- 8 Residential Bicycle Park
- 9 Common Bicycle Park/End-of-trip Facilities
- 10 Commercial Drop-off
- 11 Office Lobby



0m 2m 5m 10m  
SCALE 1: 100



# SITE PLAN

## 3<sup>rd</sup> Storey Plan

- 12** The SOcial Club
- 13** Games Room
- 14** Lounge Deck
- 15** Azure Spa
- 16** Azure Pool
- 17** Gymnasium
- 18** The Patio
- 19** The Playpen
- 20** The Fitness Zone
- 21** Sky Alcove  
(Level 5, 7, 9, 12, 14, & 19)
- 22** One SOcial (Level 19)



0m 2m 5m 10m  
SCALE 1: 100



# UNIT DISTRIBUTION

LEGEND:

<span style="display:inline-block; width:15px; height:15px; background-color:#f4a460;"></span> A1 - Studio	<span style="display:inline-block; width:15px; height:15px; background-color:#4f7942;"></span> 1S1 - 1 Bedroom + Study	<span style="display:inline-block; width:15px; height:15px; background-color:#c4a03d;"></span> 2H1 - 2 Bedroom Premium
<span style="display:inline-block; width:15px; height:15px; background-color:#8b6914;"></span> A2 - Studio	<span style="display:inline-block; width:15px; height:15px; background-color:#c0392b;"></span> 2C1 - 2 Bedroom Deluxe	<span style="display:inline-block; width:15px; height:15px; background-color:#5d4037;"></span> 2S2 - 2 Bedroom Premium + Study
<span style="display:inline-block; width:15px; height:15px; background-color:#f1c40f;"></span> 1B1 - 1 Bedroom Suite	<span style="display:inline-block; width:15px; height:15px; background-color:#8e44ad;"></span> 2C2 - 2 Bedroom Deluxe	<span style="display:inline-block; width:15px; height:15px; background-color:#2e7d32;"></span> 3H1 - 3 Bedroom Premium
<span style="display:inline-block; width:15px; height:15px; background-color:#e67e22;"></span> 1B2 - 1 Bedroom Suite	<span style="display:inline-block; width:15px; height:15px; background-color:#a67c52;"></span> 2C3 - 2 Bedroom Deluxe	<span style="display:inline-block; width:15px; height:15px; background-color:#34495e;"></span> 3D1 - 3 Bedroom Luxury
<span style="display:inline-block; width:15px; height:15px; background-color:#27ae60;"></span> 1H1 - 1 Bedroom Premium	<span style="display:inline-block; width:15px; height:15px; background-color:#d4c08d;"></span> 2S1 - 2 Bedroom Deluxe + Study	<span style="display:inline-block; width:15px; height:15px; background-color:#1a1a1a;"></span> 3D2 - 3 Bedroom Luxury

## 1A SOPHIA ROAD, SINGAPORE 229508

UNIT FLR	21	22	23	24	25	26	27	28	29	30
19	1B1	2C1	3D1	2H1	2S2	2S1	2S1	2H1	2H1	1B1
18	1B1	2C1	3D1	2H1	2S2	2S1	2S1	2H1	2H1	1B1
17	1B1	2C1	3D1	2H1	2S2	2S1	2S1	2H1	2H1	1B1
16	1B1	2C1	3D1	2H1	2S2	2S1	2S1	2H1	2H1	1B1
15	1B1	2C1	3D1	2H1	2S2	2S1	2S1	2H1	2H1	1B1
14	1B1	2C1	3D1	2H1	2S2	2S1	2S1	2H1	2H1	1B1
13	1B1	2C1	3D1	2H1	2S2	2S1	2S1	2H1	2H1	1B1
12	1B1	2C1	3D1	2H1	2S2	2S1	2S1	2H1	2H1	1B1
11	1B1	2C1	3D1	2H1	2S2	2S1	2S1	2H1	2H1	1B1
10	1B1	2C1	3D1	2H1	2S2	2S1	2S1	2H1	2H1	1B1
9	1B1	2C1	3D1	2H1	2S2	2S1	2S1	2H1	2H1	1B1
8	1B1	2C2	3D1	2H1	2S2	2S1	2S1	2H1	2H1	1B1
7	1B2	2C1	3D2	2H1	2S2	2S1	2S1	2H1	2H1	1B1
6	1B1	2C1	3D1	2H1	2S2	2S1	2S1	2H1	2H1	1B1
5	1B1	2C1	3D2	2H1	2S2	2S1	2S1	2H1	1H1	1B2
4	1B2	2C2	3D1	1H1	2S2	2S1	2S1	GAMES ROOM	THE SOCIAL CLUB	
3	1B1-P	2C1-P	3D1-P	1H1-P	2S2-P	2S1-P	2S1-P			
2	COMMERCIAL									
1	COMMERCIAL / BASEMENT CARPARK									
B1	COMMERCIAL / BASEMENT CARPARK									
B2	BASEMENT CARPARK									
B3	BASEMENT CARPARK									

## 1B SOPHIA ROAD, SINGAPORE 229509

UNIT FLR	31	32	33	34	35	36	37	38	39	40	41	42
19	1B1	1S1	1S1	3H1	ONE SOCIAL	A1	A2	A2	A1	2H1	2H1	1B1
18	1B1	1S1	1S1	3H1	2C3	A1	A2	A2	A1	2H1	2H1	1B1
17	1B1	1S1	1S1	3H1	2C3	A1	A2	A2	A1	2H1	2H1	1B1
16	1B1	1S1	1S1	3H1	2C3	A1	A2	A2	A1	2H1	2H1	1B1
15	1B1	1S1	1S1	3H1	2C3	A1	A2	A2	A1	2H1	2H1	1B1
14	1B1	1S1	1S1	3H1	2C3	A1	A2	A2	A1	2H1	2H1	1B1
13	1B1	1S1	1S1	3H1	2C3	A1	A2	A2	A1	2H1	2H1	1B1
12	1B1	1S1	1S1	3H1	2C3	A1	A2	A2	A1	2H1	2H1	1B1
11	1B1	1S1	1S1	3H1	2C3	A1	A2	A2	A1	2H1	2H1	1B1
10	1B1	1S1	1S1	3H1	2C3	A1	A2	A2	A1	2H1	2H1	1B1
9	1B1	1S1	1S1	3H1	2C3	A1	A2	A2	A1	2H1	2H1	1B1
8	1B1	1S1	1S1	3H1	2C3	A1	A2	A2	A1	2H1	2H1	1B1
7	1B1	1S1	1S1	3H1	2C3	A1	A2	A2	A1	2H1	2H1	1B1
6	1B1	1S1	1S1	3H1	2C3	A1	A2	A2	A1	2H1	2H1	1B1
5	1B1	1S1	1S1	3H1	2C3	A1	A2	A2	A1	2H1	2H1	1B1
4	1B1	1S1	1S1	3H1	2C3	A1	A2	A2	A1	1H1	1H1	1B1
3	1B1-P	1S1-P	1S1-P	3H1-P	2C3-P	A1-P	A2-P	A2-P	A1-P	1H1-P	1H1-P	1B1-P
2	COMMERCIAL											
1	COMMERCIAL / BASEMENT CARPARK											
B1	COMMERCIAL / BASEMENT CARPARK											
B2	BASEMENT CARPARK											
B3	BASEMENT CARPARK											

# Studio

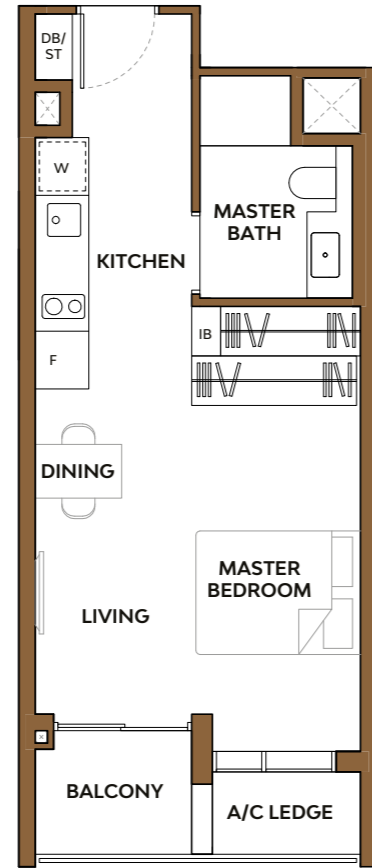
## Type A1

Area: 40 sq m  
(include Balcony 3 sq m, A/C ledge 2 sq m)

### Unit(s)

#04-36 TO #19-36

#04-39 TO #19-39



# Studio

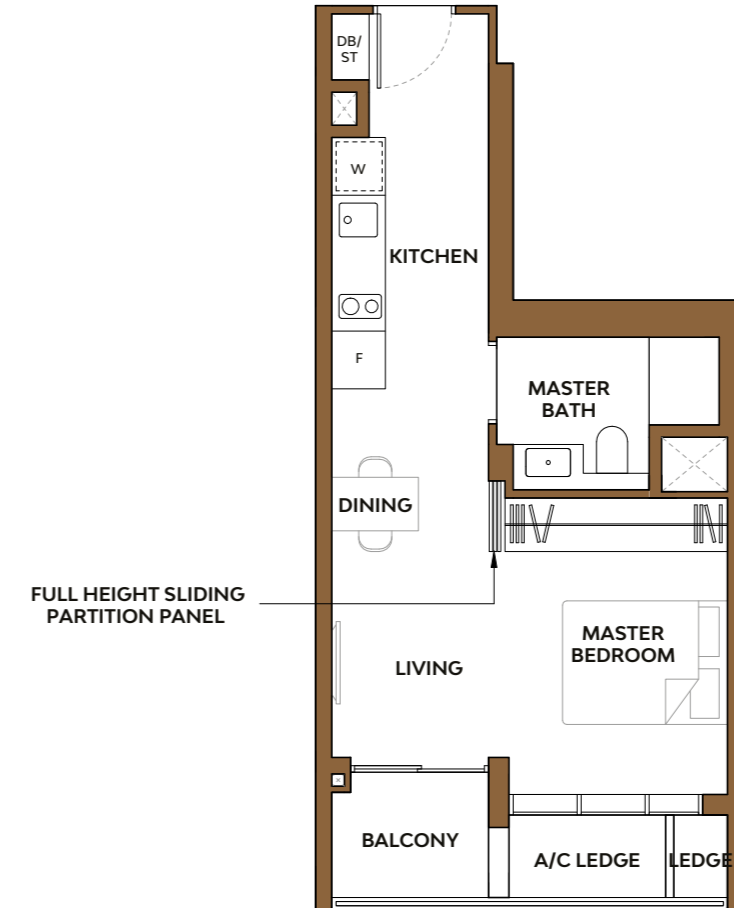
## Type A2

Area: 42 sq m  
(include Balcony 3 sq m, A/C ledge 2 sq m)

### Unit(s)

#04-37\* TO #19-37\*

#04-38 TO #19-38



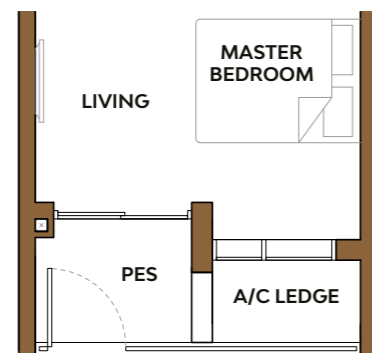
## Type A1-P

Area: 40 sq m  
(include PES 3 sq m, A/C ledge 2 sq m)

### Unit(s)

#03-36

#03-39



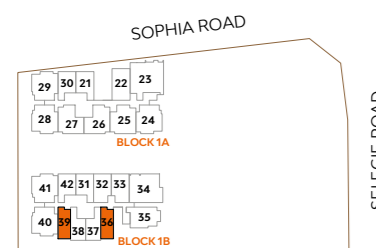
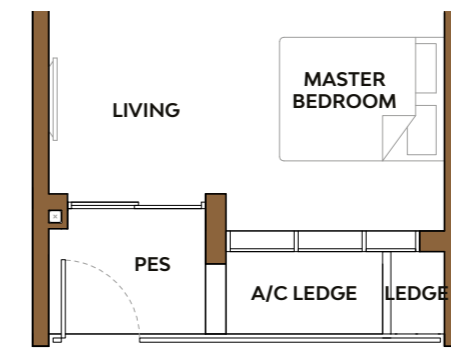
## Type A2-P

Area: 42 sq m  
(include PES 3 sq m, A/C ledge 2 sq m)

### Unit(s)

#03-37\*

#03-38

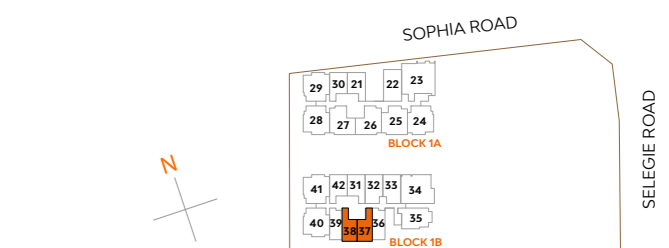


### LEGEND:

IB: IRONING BOARD

Note: \*Mirror Image

Plans are subject to change/amendments as may be required and/or approved by the Developer and/or the relevant authorities and do not form part of any offer or contract. These are not drawn to scale and are for the purpose of visual representation only. The balcony shall not be enclosed unless with the approved balcony screen. For an illustration of the approved balcony screen, please refer to APPROVED BALCONY SCREEN DESIGN page of this brochure.



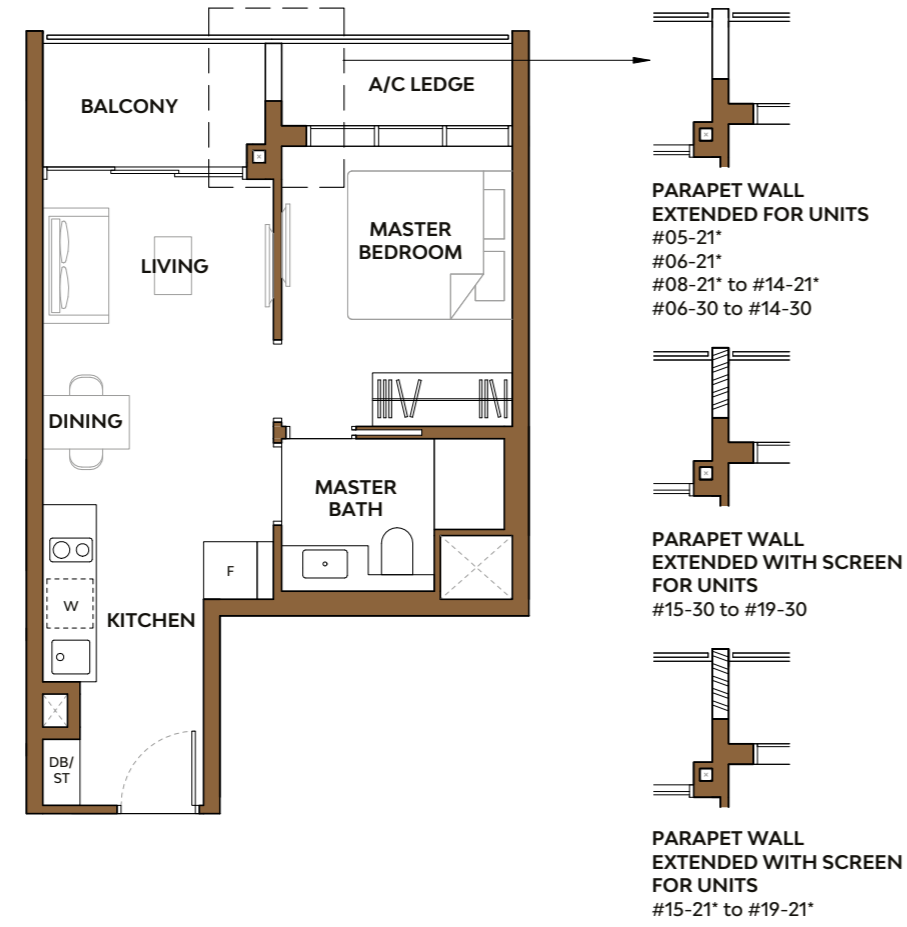
# 1-Bedroom Suite

## Type 1B1

Area: 45 sq m  
(include Balcony 5 sq m, A/C ledge 3 sq m)

### Unit(s)

- #05-21\*
- #06-21\*
- #08-21\* TO #19-21\*
- #06-30 TO #19-30
- #04-31\* TO #19-31\*
- #04-42 TO #19-42



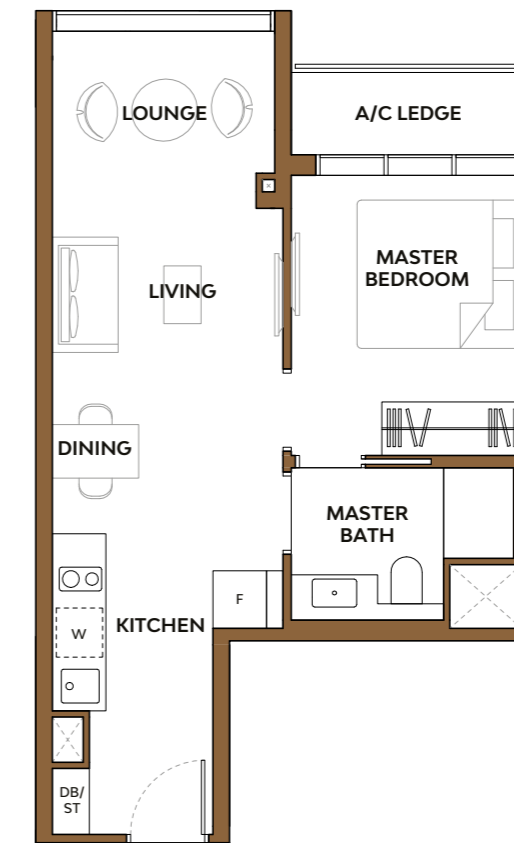
# 1-Bedroom Suite

## Type 1B2

Area: 47 sq m (include A/C ledge 3 sq m)

### Unit(s)

- #04-21\*
- #07-21\*
- #05-30

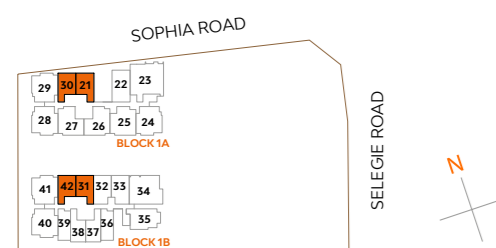
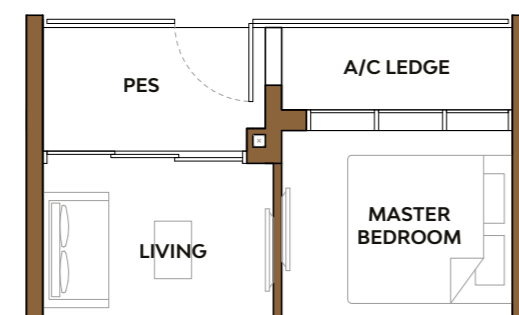


## Type 1B1-P

Area: 45 sq m  
(include PES 5 sq m, A/C ledge 3 sq m)

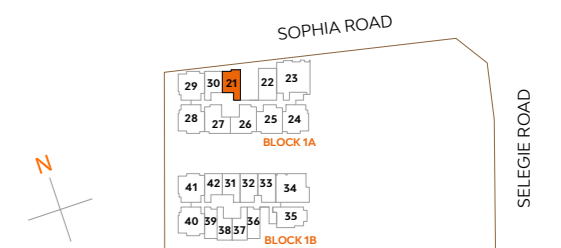
### Unit(s)

- #03-21\*
- #03-31\*
- #03-42



Note: \*Mirror Image

Plans are subject to change/amendments as may be required and/or approved by the Developer and/or the relevant authorities and do not form part of any offer or contract. These are not drawn to scale and are for the purpose of visual representation only. The balcony shall not be enclosed unless with the approved balcony screen. For an illustration of the approved balcony screen, please refer to APPROVED BALCONY SCREEN DESIGN page of this brochure.



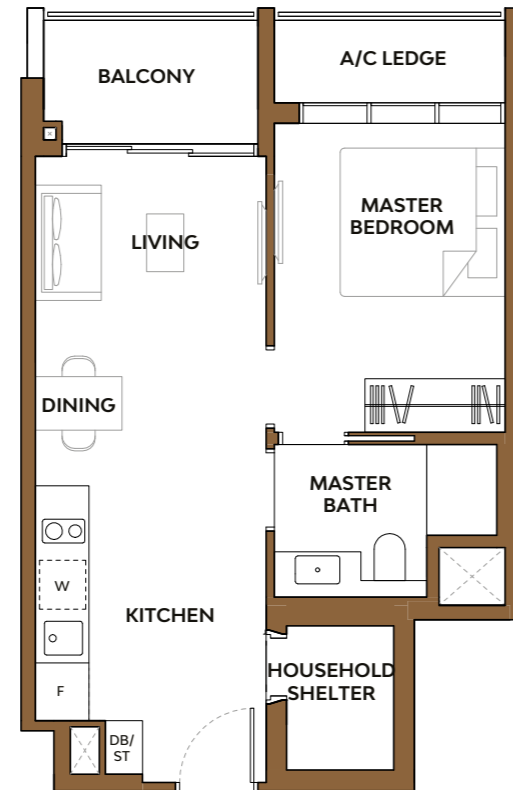
# 1-Bedroom Premium

## Type 1H1

Area: 50 sq m  
(include Balcony 5 sq m, A/C ledge 3 sq m)

### Unit(s)

- #04-24
- #04-40\*
- #04-41
- #05-29



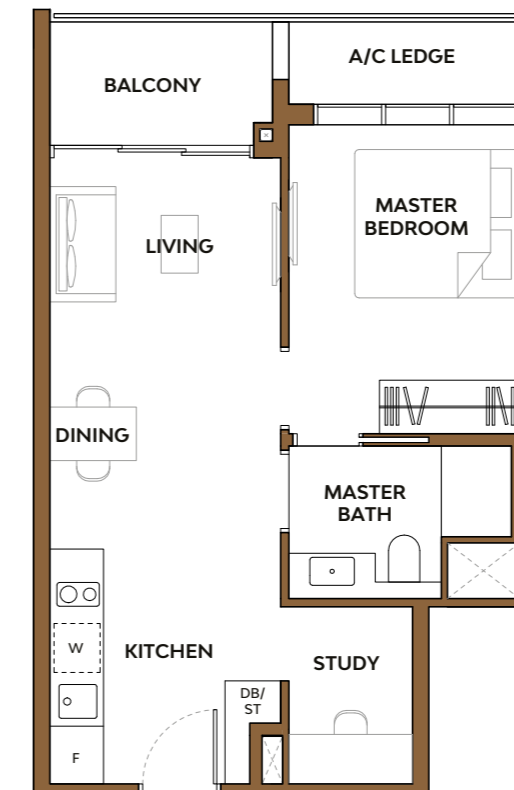
# 1-Bedroom + Study

## Type 1S1

Area: 51 sq m  
(include Balcony 5 sq m, A/C ledge 3 sq m)

### Unit(s)

- #04-32 TO #19-32
- #04-33\* TO #19-33\*

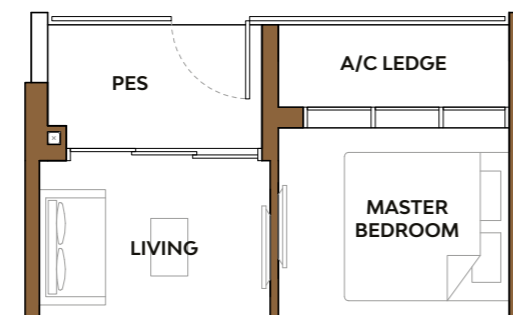


## Type 1H1-P

Area: 50 sq m  
(include PES 5 sq m, A/C ledge 3 sq m)

### Unit(s)

- #03-24
- #03-40\*
- #03-41

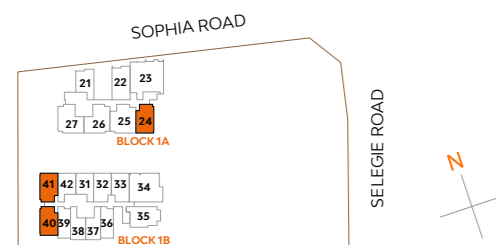
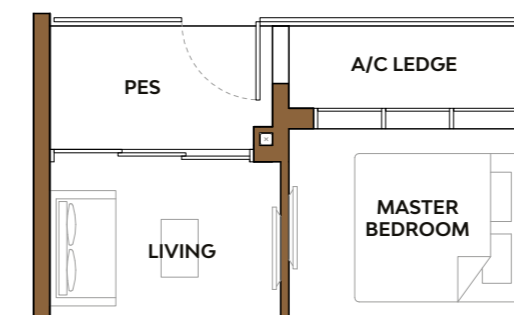


## Type 1S1-P

Area: 51 sq m  
(include PES 5 sq m, A/C ledge 3 sq m)

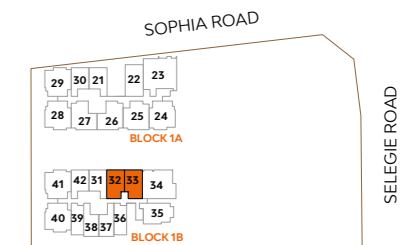
### Unit(s)

- #03-32
- #03-33\*



Note: \*Mirror Image

Plans are subject to change/amendments as may be required and/or approved by the Developer and/or the relevant authorities and do not form part of any offer or contract. These are not drawn to scale and are for the purpose of visual representation only. The balcony shall not be enclosed unless with the approved balcony screen. For an illustration of the approved balcony screen, please refer to APPROVED BALCONY SCREEN DESIGN page of this brochure.





## 2-Bedroom Deluxe

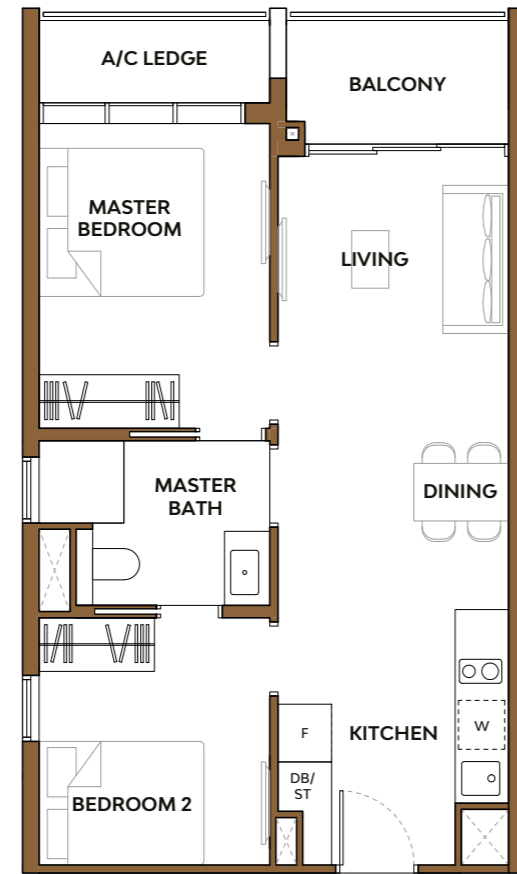
### Type 2C1

Area: 60 sq m  
(include Balcony 5 sq m, A/C ledge 3 sq m)

#### Unit(s)

#05-22 TO #07-22

#09-22 TO #19-22



## 2-Bedroom Deluxe

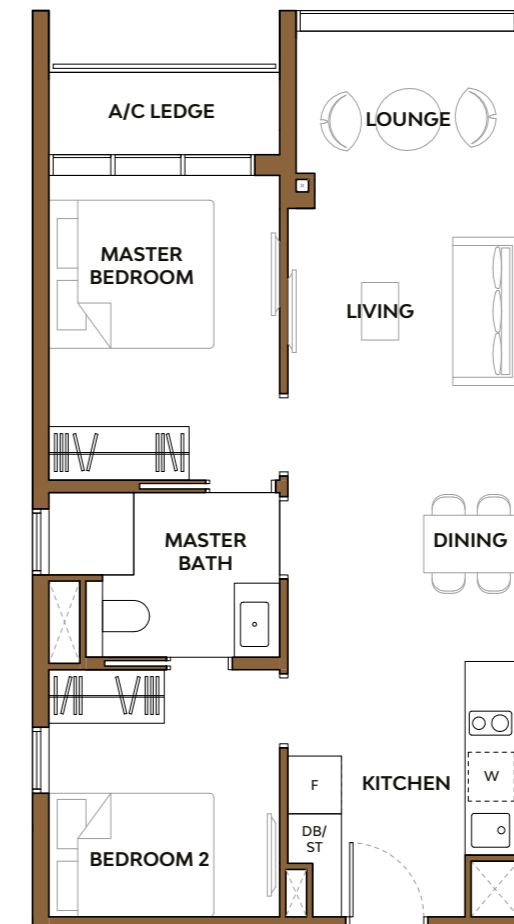
### Type 2C2

Area: 62 sq m (include A/C ledge 3 sq m)

#### Unit(s)

#04-22

#08-22

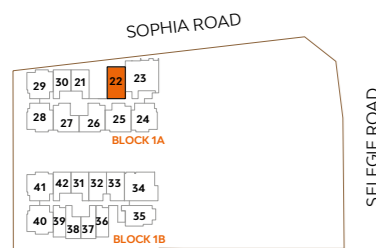
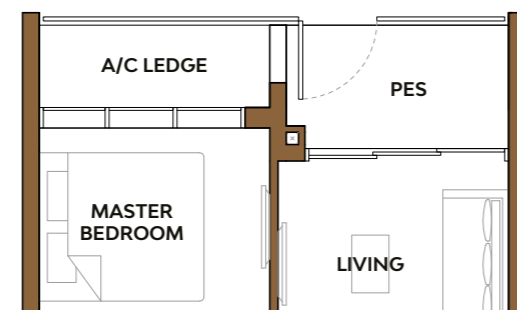


### Type 2C1-P

Area: 60 sq m  
(include PES 5 sq m, A/C ledge 3 sq m)

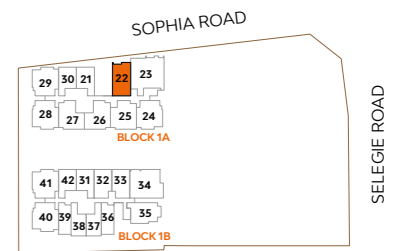
#### Unit(s)

#03-22



Note: \*Mirror Image

Plans are subject to change/amendments as may be required and/or approved by the Developer and/or the relevant authorities and do not form part of any offer or contract. These are not drawn to scale and are for the purpose of visual representation only. The balcony shall not be enclosed unless with the approved balcony screen. For an illustration of the approved balcony screen, please refer to APPROVED BALCONY SCREEN DESIGN page of this brochure.



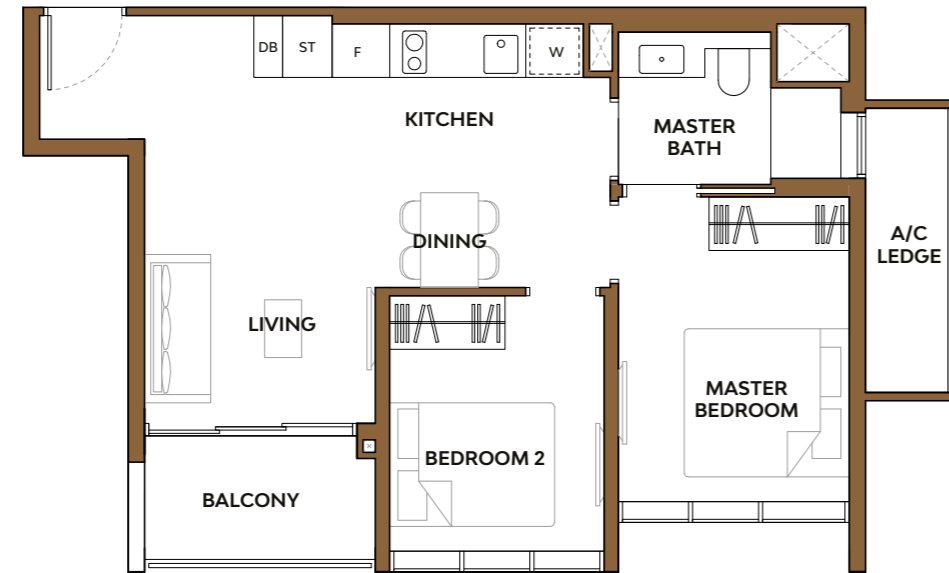
## 2-Bedroom Deluxe

### Type 2C3

Area: 62 sq m  
(include Balcony 5 sq m, A/C ledge 4 sq m)

#### Unit(s)

#04-35 TO #18-35



## 2-Bedroom Deluxe + Study

### Type 2S1

Area: 65 sq m  
(include Balcony 5 sq m, A/C ledge 3 sq m)

#### Unit(s)

#04-26\* TO #19-26\*

#04-27 TO #19-27

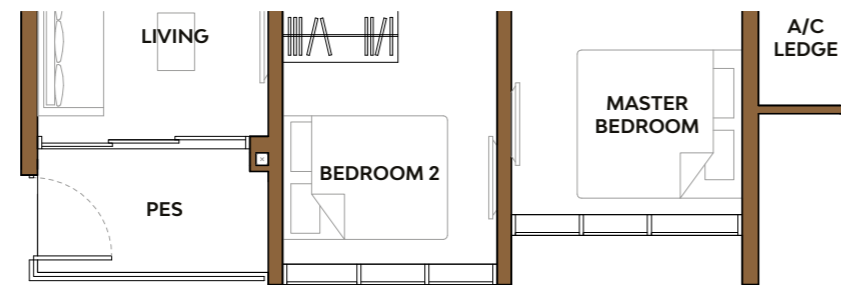


### Type 2C3-P

Area: 62 sq m  
(include PES 5 sq m, A/C ledge 4 sq m)

#### Unit(s)

#03-35



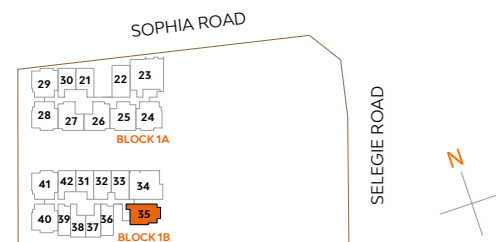
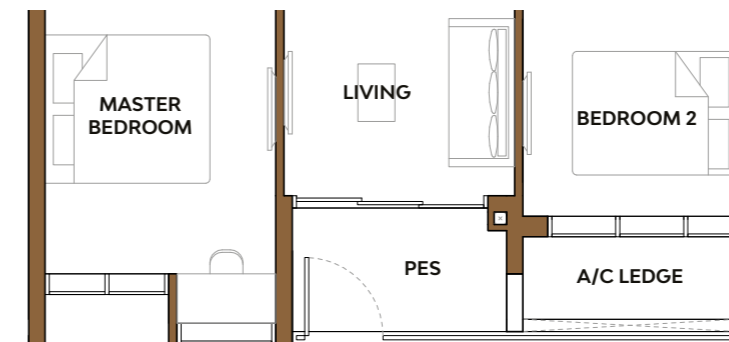
### Type 2S1-P

Area: 65 sq m  
(include PES 5 sq m, A/C ledge 3 sq m)

#### Unit(s)

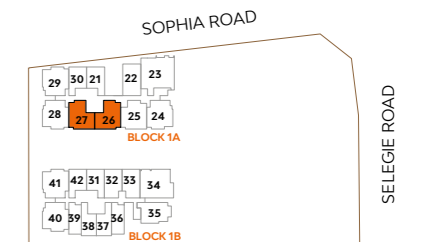
#03-26\*

#03-27



Note: \*Mirror Image

Plans are subject to change/amendments as may be required and/or approved by the Developer and/or the relevant authorities and do not form part of any offer or contract. These are not drawn to scale and are for the purpose of visual representation only. The balcony shall not be enclosed unless with the approved balcony screen. For an illustration of the approved balcony screen, please refer to APPROVED BALCONY SCREEN DESIGN page of this brochure.



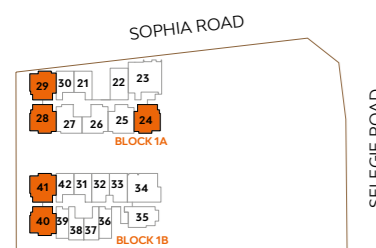
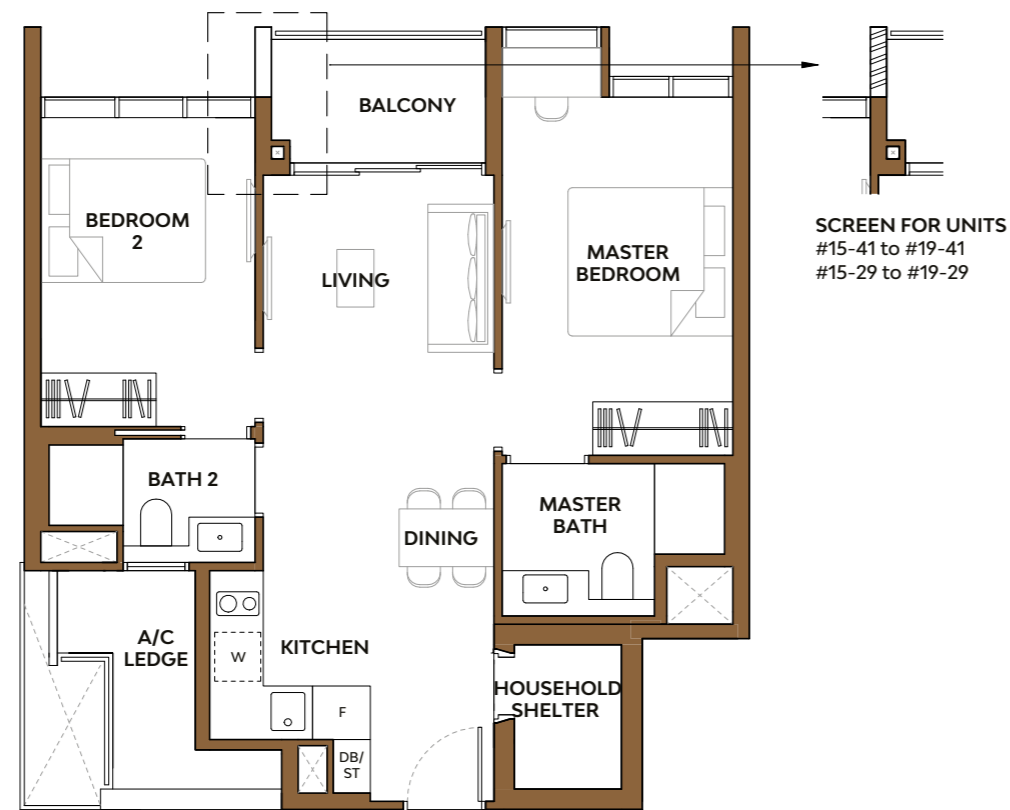
## 2-Bedroom Premium

### Type 2H1

Area: 71 sq m  
(include Balcony 5 sq m, A/C ledge 5 sq m)

#### Unit(s)

#05-24 TO #19-24  
#05-28\* TO #19-28\*  
#05-40\* TO #19-40\*  
#05-41 TO #19-41  
#06-29 TO #19-29



Note: \*Mirror Image

Plans are subject to change/amendments as may be required and/or approved by the Developer and/or the relevant authorities and do not form part of any offer or contract. These are not drawn to scale and are for the purpose of visual representation only. The balcony shall not be enclosed unless with the approved balcony screen. For an illustration of the approved balcony screen, please refer to APPROVED BALCONY SCREEN DESIGN page of this brochure.

## 2-Bedroom Premium + Study

### Type 2S2

Area: 71 sq m  
(include Balcony 5 sq m, A/C ledge 3 sq m)

#### Unit(s)

#04-25 TO #19-25

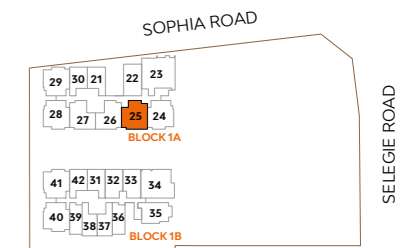


### Type 2S2-P

Area: 71 sq m  
(include PES 5 sq m, A/C ledge 3 sq m)

#### Unit(s)

#03-25



SELEGIE ROAD

## 3-Bedroom Premium

### Type 3H1

Area: 95 sq m  
(include Balcony 8 sq m, A/C ledge 5 sq m)

### Unit(s)

#04-34 TO #19-34



## 3-Bedroom Luxury

### Type 3D1

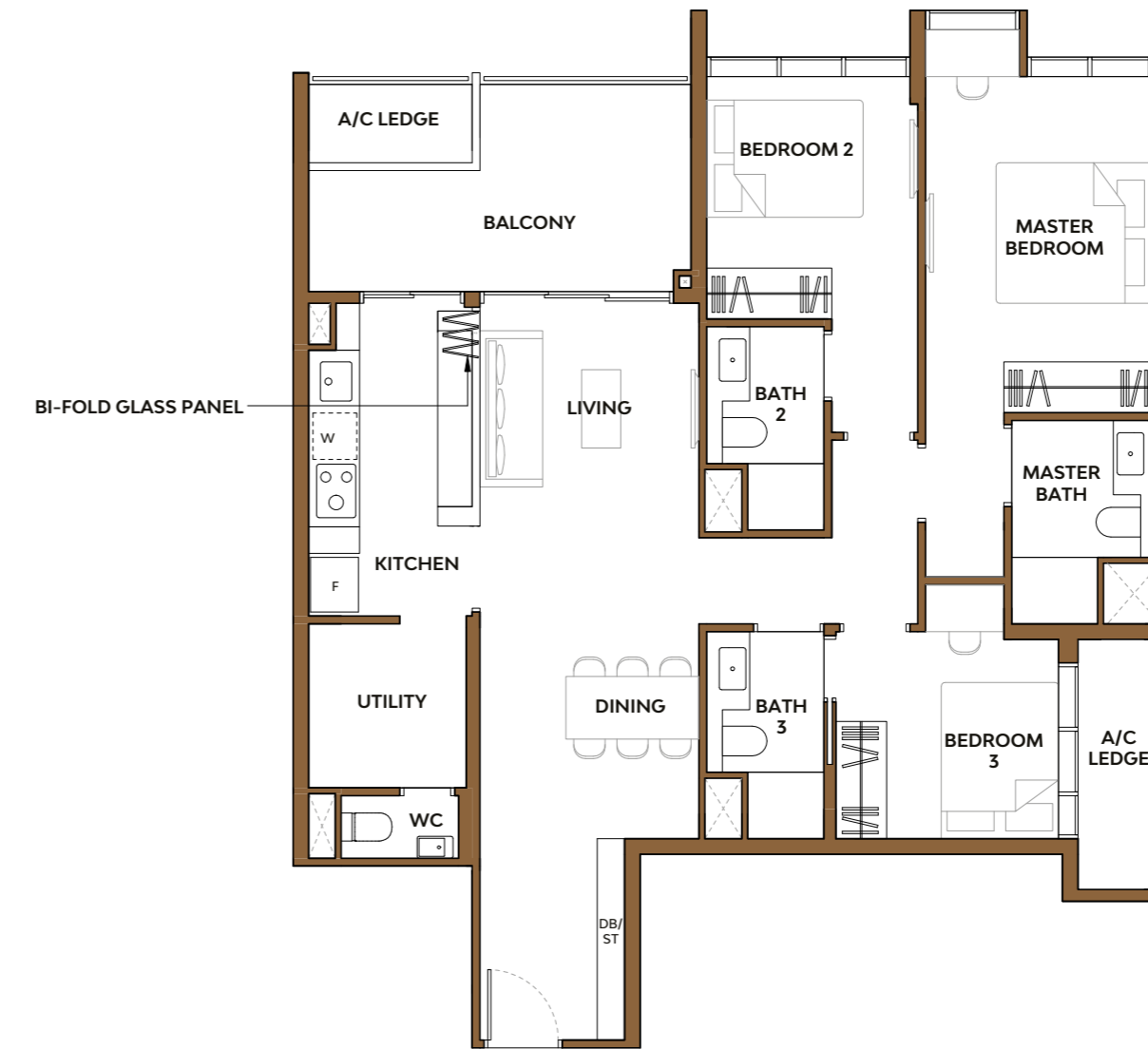
Area: 114 sq m  
(include Balcony 12 sq m, A/C ledge 6 sq m)

### Unit(s)

#04-23

#06-23

#08-23 TO #19-23



### Type 3H1-P

Area: 95 sq m  
(include PES 8 sq m, A/C ledge 5 sq m)

### Unit(s)

#03-34

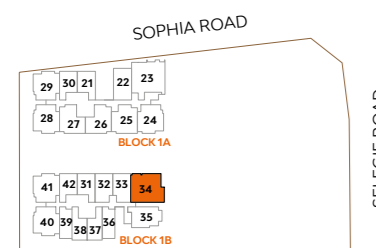
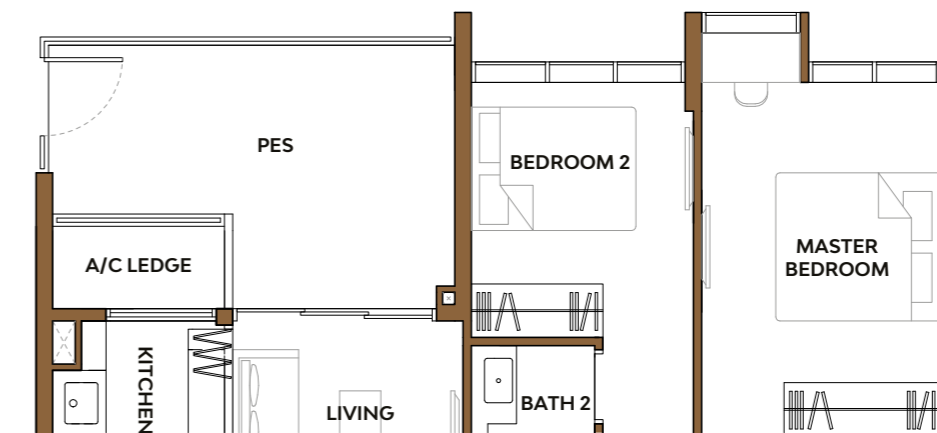


### Type 3D1-P

Area: 116 sq m  
(include PES 14 sq m, A/C ledge 6 sq m)

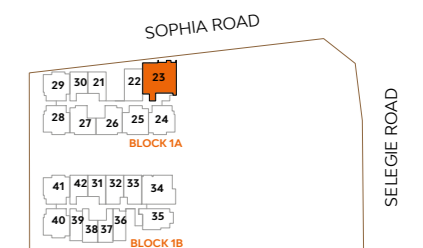
### Unit(s)

#03-23



Note: \*Mirror Image

Plans are subject to change/amendments as may be required and/or approved by the Developer and/or the relevant authorities and do not form part of any offer or contract. These are not drawn to scale and are for the purpose of visual representation only. The balcony shall not be enclosed unless with the approved balcony screen. For an illustration of the approved balcony screen, please refer to APPROVED BALCONY SCREEN DESIGN page of this brochure.



SELEGIE ROAD

# 3-Bedroom Luxury

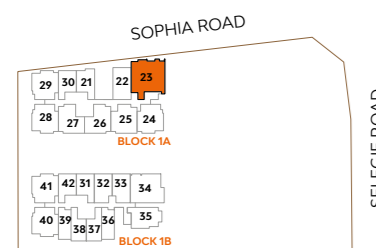
## Type 3D2

Area: 116 sq m  
(include A/C ledge 6 sq m)

### Unit(s)

#05-23

#07-23

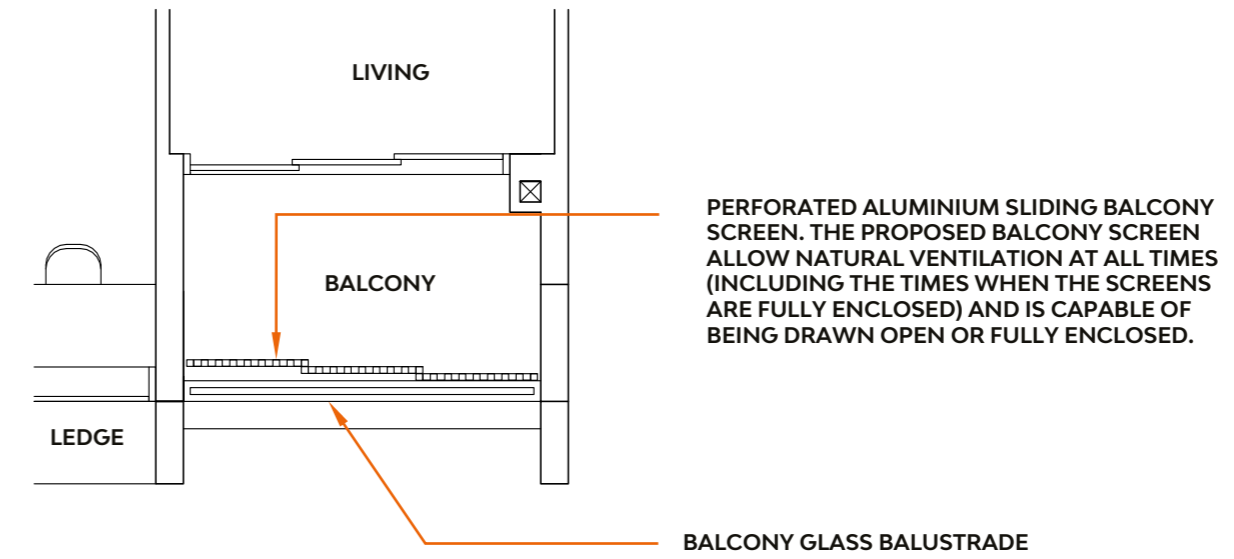
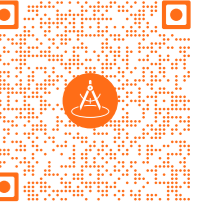


Note: "Mirror Image"

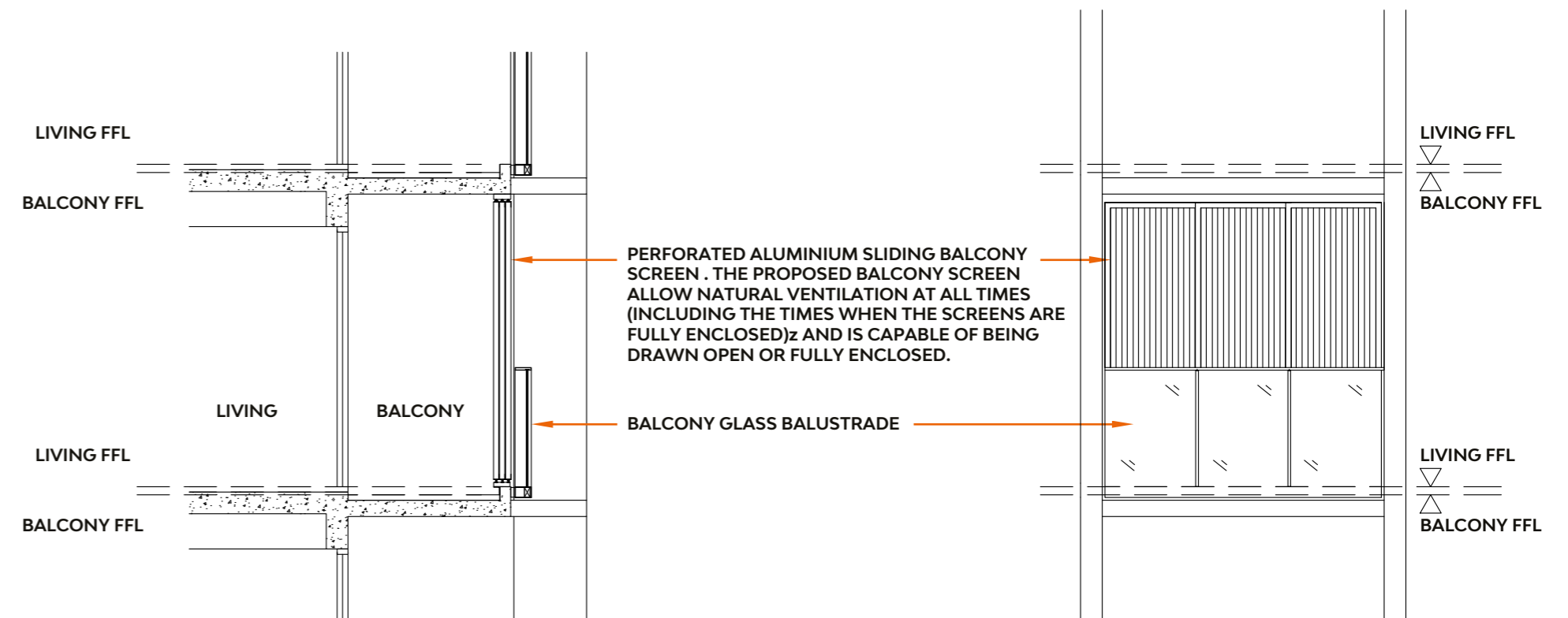
Plans are subject to change/amendments as may be required and/or approved by the Developer and/or the relevant authorities and do not form part of any offer or contract. These are not drawn to scale and are for the purpose of visual representation only. The balcony shall not be enclosed unless with the approved balcony screen. For an illustration of the approved balcony screen, please refer to APPROVED BALCONY SCREEN DESIGN page of this brochure.

# Approved Balcony Screen Design

SCAN TO VIEW SPECIFICATIONS



BALCONY SCREEN - PLAN



SECTION

ELEVATION 1

The Balcony (if any) or private enclosed space (if any), where applicable, are not to be enclosed except with a balcony screen which has been approved and complies with the competent authorities' guidelines. Purchaser may opt to have approved balcony screen installed at the balcony (if any) or private enclosed space (if any), where applicable, at the unit at purchaser's own cost