

Welcome Home
to Nava Grove



NAVA GROVE

Marina Bay Sands

One Holland Village

Singapore Botanic Gardens

Orchard Road

Dempsey Hill

Henry Park Primary School

Buona Vista MRT Interchange

The Star Vista

Singapore Science Park I & II

one-north

Dover MRT

Singapore Polytechnic

National University of Singapore

School of Science and Technology

Dover Forest

Ulu Pandan Park Connector

All Within Minutes' Reach

Next Stop, Everywhere

Dover MRT		4 min
Clementi MRT Interchange		4 min
King Albert Park MRT Interchange		7 min
Jurong East MRT Interchange		10 min
Maju MRT (U/C)		3 min

Renowned Education Belts

Singapore University of Social Sciences (SUSS)		3 min
Pei Tong Primary School		4 min
Henry Park Primary School		4 min
Singapore Polytechnic		4 min
National University of Singapore (NUS)		4 min
Ngee Ann Polytechnic		7 min
Methodist Girls' School		7 min
United World College of South East Asia (UWCSEA)		7 min

Embraced by Nature

Clementi Forest		2 min
Ulu Pandan Park Connector		4 min
Dover Forest		13 min
Rail Corridor		15 min

Everyday Essentials, Elevated

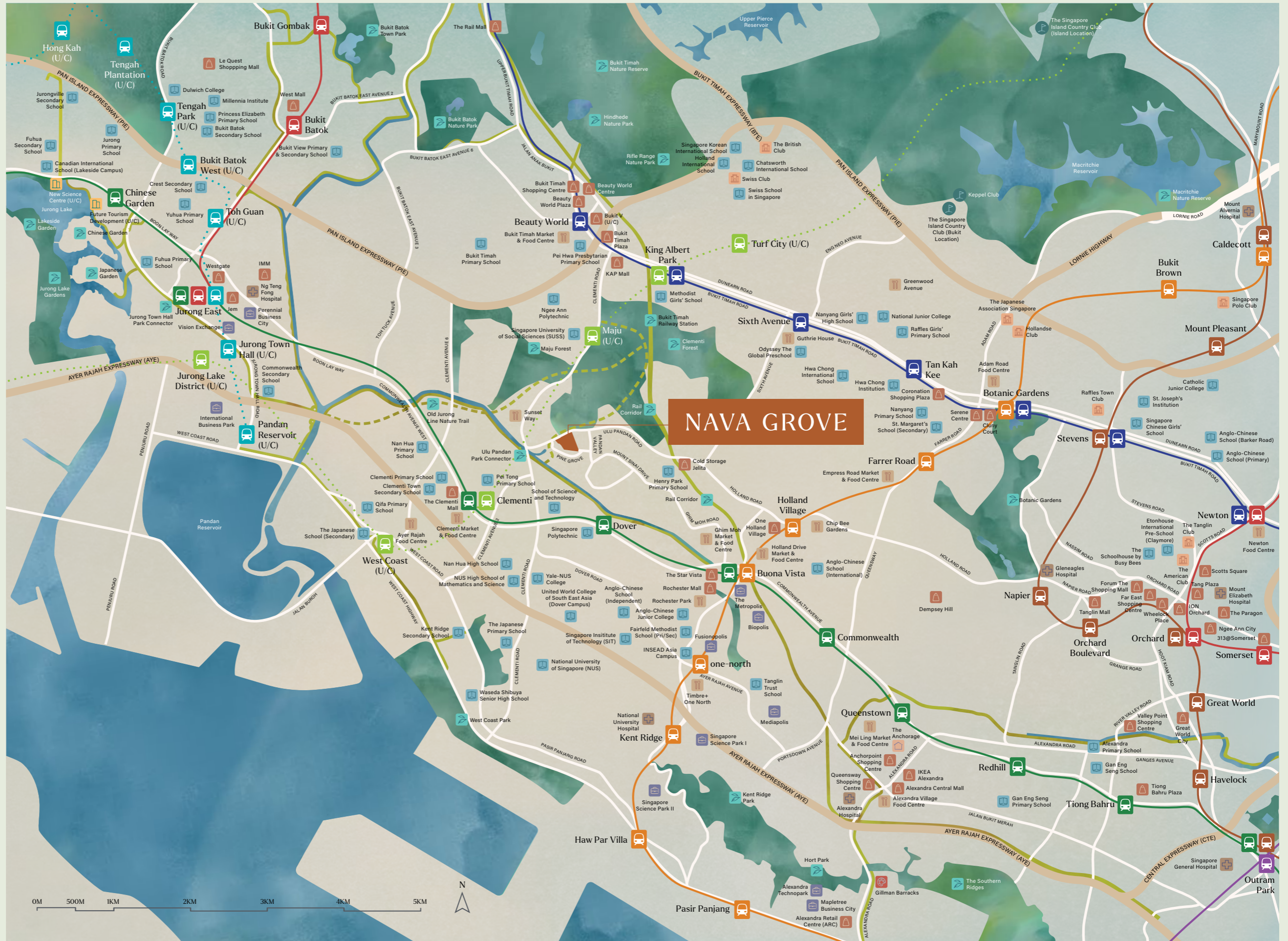
One Holland Village		5 min
Clementi Mall		5 min
The Star Vista		6 min
Dempsey Hill		9 min
Jem		9 min
IMM Mall		9 min
Westgate		10 min
ION Orchard		12 min

Thriving Business Hubs

Singapore Science Park I & II		8 min
one-north Business Park		8 min
Jurong Lake District		12 min

Travel time is an estimate based on Google Maps and optimal conditions and should not be relied on as statements of facts. Every reasonable effort has been made in the preparation of the location map, which is printed as of October 2024. For information on permissible land use and the density of sites around the housing project, the intending purchaser may refer to the Master Plan available on the Urban Redevelopment Authority's website at www.ura.gov.sg.

Legend



At Home in Nature

Experience stunning, uninterrupted views of the surrounding beauty both within and beyond Nava Grove, all while feeling at home in nature. Selected units offer seamless vistas of Clementi Forest or the serene, meandering pools at the heart of the development.

Arrival Zone

- 01 Arrival Plaza
- 02 Water Cascade
- 03 Rain Trees Courtyard
- 04 Drop-off Lounge
- 05 Resident's Lounge (Level 2)
- 06 Silver Garden

Play Zone

- 07 Gymnasium
- 08 Exercise Deck
- 09 Changing Room & Steam Shower
- 10 Children's Playroom
- 11 Children's Pool
- 12 Lazy River
- 13 Splash Play
- 14 Children's Playground
- 15 Pet's Lawn
- 16 Multipurpose Court (Basement 1)
- 17 Tennis Court (Basement 1)

Forest Zone

- 18 Forest Dining & Media Room (Level 2)
- 19 Swing Garden
- 20 Forest Walk
- 21 Swing Pod
- 22 Cocoon Pod
- 23 Fern Garden

Entertainment Zone

- 24 Central Lawn
- 25 Lagoon Marquee
- 26 Social Lawn
- 27 BBQ Pavilion
- 28 Dining Cabana
- 29 Lagoon Pool
- 30 Jacuzzi Cove
- 31 Lagoon Pool Deck
- 32 Putting Green
- 33 Function Room
- 34 Social Terrace

Wellness Zone

- 35 Look Out Walk
- 36 Look Out Pod
- 37 Bicycle Station (Basement 1)
- 38 Chill-out Pavilion
- 39 Reading Pavilion
- 40 Study Pavilion
- 41 Glamping Pavilion
- 42 BBQ Pavilion
- 43 Outdoor Fitness
- 44 Foliage Garden
- 45 Yoga Lawn
- 46 Infinity Edge Wellness Pool
- 47 Hydrotherapy Pockets
- 48 Jacuzzi Lounger
- 49 Jacuzzi Seats
- 50 Wading Pool
- 51 Wellness Pool Deck
- 52 Sunning Lawn

Ancillary

- 53 Guardhouse
- 54 Management Office (Basement 1)
- 55 Pedestrian Gate (Side Gate)
- 56 Cyclist Access Gate (Side Gate)
- 57 Entrance to Basement Car Park
- 58 Bin Center (Basement 1)
- 59 Transformer & Switch Room (Basement 1)
- 60 Genset (Basement 1)
- 61 Bicycle Parking

- Water Tank
- Ventilation Shaft



The renderings of the units as shown are for illustrative purposes only. The shading and outline of the unit type only applies to typical units. The boundary lines of the units set out here are not to be taken as a factual representation of the actual units. Kindly refer to the approved BP plans for the actual unit outline/boundary lines.



Unit Distribution

Type	Bedroom
B	2 Bedroom
BP	2 Bedroom Premium
BS	2 Bedroom + Study
C	3 Bedroom
CP	3 Bedroom Premium
D	4 Bedroom
DK	4 Bedroom Dual-Key
DP	4 Bedroom Premium + Private Lift
E	5 Bedroom Premium + Private Lift

Block 38

Unit/ Floor	1	2	3	4	5	6	7	8
24	B	CP-2	E	BS	BS	CP-3	C-2	B
23	B	CP-2	E	BS	BS	CP-3	C-2	B
22	B	CP-2	E	BS	BS	CP-3	C-2	B
21	B	CP-2	E	BS	BS	CP-3	C-2	B
20	B	CP-2	E	BS	BS	CP-3	C-2	B
19	B	CP-2	E	BS	BS	CP-3	C-2	B
18	B	CP-2	E	BS	BS	CP-3	C-2	B
17	B	CP-2	E	BS	BS	CP-3	C-2	B
16	B	CP-2	E	BS	BS	CP-3	C-2	B
15	B	CP-2	E	BS	BS	CP-3	C-2	B
14	B	CP-2	E	BS	BS	CP-3	C-2	B
13	B	CP-2	E	BS	BS	CP-3	C-2	B
12	B	CP-2	E	BS	BS	CP-3	C-2	B
11	B	CP-2	E	BS	BS	CP-3	C-2	B
10	B	CP-2	E	BS	BS	CP-3	C-2	B
9	B	CP-2	E	BS	BS	CP-3	C-2	B
8	B	CP-2	E	BS	BS	CP-3	C-2	B
7	B	CP-2	E	BS	BS	CP-3	C-2	B
6	B	CP-2	E	BS	BS	CP-3	C-2	B
5	B	CP-2	E	BS	BS	CP-3	C-2	B
4	B	CP-2	E	BS	BS	CP-3	C-2	B
3	B	CP-2	E	BS	BS	CP-3	C-2	B
2	B	CP-2	E	BS	BS	CP-3	C-2	B
1	Garden							
B	Basement Car Park							

Block 40

Unit/ Floor	9	10	11	12	13	14	15	16
24	BP-1	CP-4	D-1	BP-2	C-1	DK	D-2	BP-1
23	BP-1	CP-4	D-1	BP-2	C-1	DK	D-2	BP-1
22	BP-1	CP-4	D-1	BP-2	C-1	DK	D-2	BP-1
21	BP-1	CP-4	D-1	BP-2	C-1	DK	D-2	BP-1
20	BP-1	CP-4	D-1	BP-2	C-1	DK	D-2	BP-1
19	BP-1	CP-4	D-1	BP-2	C-1	DK	D-2	BP-1
18	BP-1	CP-4	D-1	BP-2	C-1	DK	D-2	BP-1
17	BP-1	CP-4	D-1	BP-2	C-1	DK	D-2	BP-1
16	BP-1	CP-4	D-1	BP-2	C-1	DK	D-2	BP-1
15	BP-1	CP-4	D-1	BP-2	C-1	DK	D-2	BP-1
14	BP-1	CP-4	D-1	BP-2	C-1	DK	D-2	BP-1
13	BP-1	CP-4	D-1	BP-2	C-1	DK	D-2	BP-1
12	BP-1	CP-4	D-1	BP-2	C-1	DK	D-2	BP-1
11	BP-1	CP-4	D-1	BP-2	C-1	DK	D-2	BP-1
10	BP-1	CP-4	D-1	BP-2	C-1	DK	D-2	BP-1
9	BP-1	CP-4	D-1	BP-2	C-1	DK	D-2	BP-1
8	BP-1	CP-4	D-1	BP-2	C-1	DK	D-2	BP-1
7	BP-1	CP-4	D-1	BP-2	C-1	DK	D-2	BP-1
6	BP-1	CP-4	D-1	BP-2	C-1	DK	D-2	BP-1
5	BP-1	CP-4	D-1	BP-2	C-1	DK	D-2	BP-1
4	BP-1	CP-4	D-1	BP-2	C-1	DK	D-2	BP-1
3	BP-1	CP-4	D-1	BP-2	C-1	DK	D-2	BP-1
2	BP-1	CP-4	D-1	BP-2	C-1	DK	D-2	BP-1
1	Garden							
B	Basement Car Park							

Block 42

Unit/ Floor	17	18	19	20	21	22	23	24
24	B	CP-1	DP-2	C-1	BP-2	DP-1	C-3	B
23	B	CP-1	DP-2	C-1	BP-2	DP-1	C-3	B
22	B	CP-1	DP-2	C-1	BP-2	DP-1	C-3	B
21	B	CP-1	DP-2	C-1	BP-2	DP-1	C-3	B
20	B	CP-1	DP-2	C-1	BP-2	DP-1	C-3	B
19	B	CP-1	DP-2	C-1	BP-2	DP-1	C-3	B
18	B	CP-1	DP-2	C-1	BP-2	DP-1	C-3	B
17	B	CP-1	DP-2	C-1	BP-2	DP-1	C-3	B
16	B	CP-1	DP-2	C-1	BP-2	DP-1	C-3	B
15	B	CP-1	DP-2	C-1	BP-2	DP-1	C-3	B
14	B	CP-1	DP-2	C-1	BP-2	DP-1	C-3	B
13	B	CP-1	DP-2	C-1	BP-2	DP-1	C-3	B
12	B	CP-1	DP-2	C-1	BP-2	DP-1	C-3	B
11	B	CP-1	DP-2	C-1	BP-2	DP-1	C-3	B
10	B	CP-1	DP-2	C-1	BP-2	DP-1	C-3	B
9	B	CP-1	DP-2	C-1	BP-2	DP-1	C-3	B
8	B	CP-1	DP-2	C-1	BP-2	DP-1	C-3	B
7	B	CP-1	DP-2	C-1	BP-2	DP-1	C-3	B
6	B	CP-1	DP-2	C-1	BP-2	DP-1	C-3	B
5	B	CP-1	DP-2	C-1	BP-2	DP-1	C-3	B
4	B	CP-1	DP-2	C-1	BP-2	DP-1	C-3	B
3	B	CP-1	DP-2	C-1	BP-2	DP-1	C-3	B
2	B	CP-1	DP-2	C-1	BP-2	DP-1	C-3	B
1	Garden							
B	Basement Car Park							

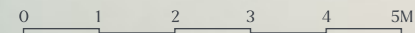
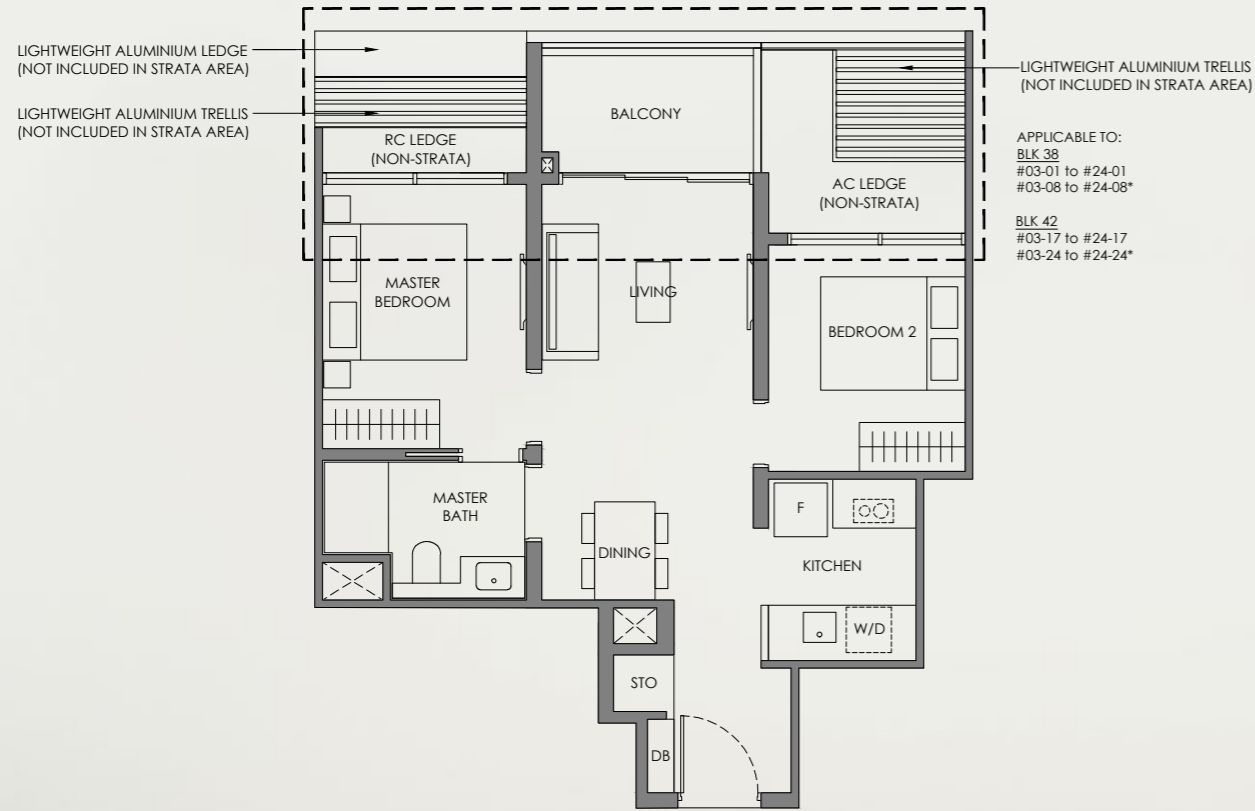
2 Bedroom

Type B

58 sqm / 624 sqft

BLK 38
#02-01 to #24-01
#02-08 to #24-08*

BLK 42
#02-17 to #24-17
#02-24 to #24-24*



Legend (Where Applicable):

- | | |
|-------------------------|----------------------------------|
| F - Fridge | WI - Wine Chiller |
| W/D - Washer cum Dryer | STO - Store |
| DB - Distribution Board | DM - Display Module |
| WC - Water Closet | WPD - Water Purifier & Dispenser |
| HS - Household Shelter | DW - Dish Washer |
| PR - Powder Room | *Mirror Image |

- Wall not allowed to be hacked or altered (including by way of drilling)
- Services void space (excluded from strata area)
- Rainwater downpipe shaft space (excluded from strata area)

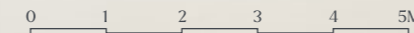
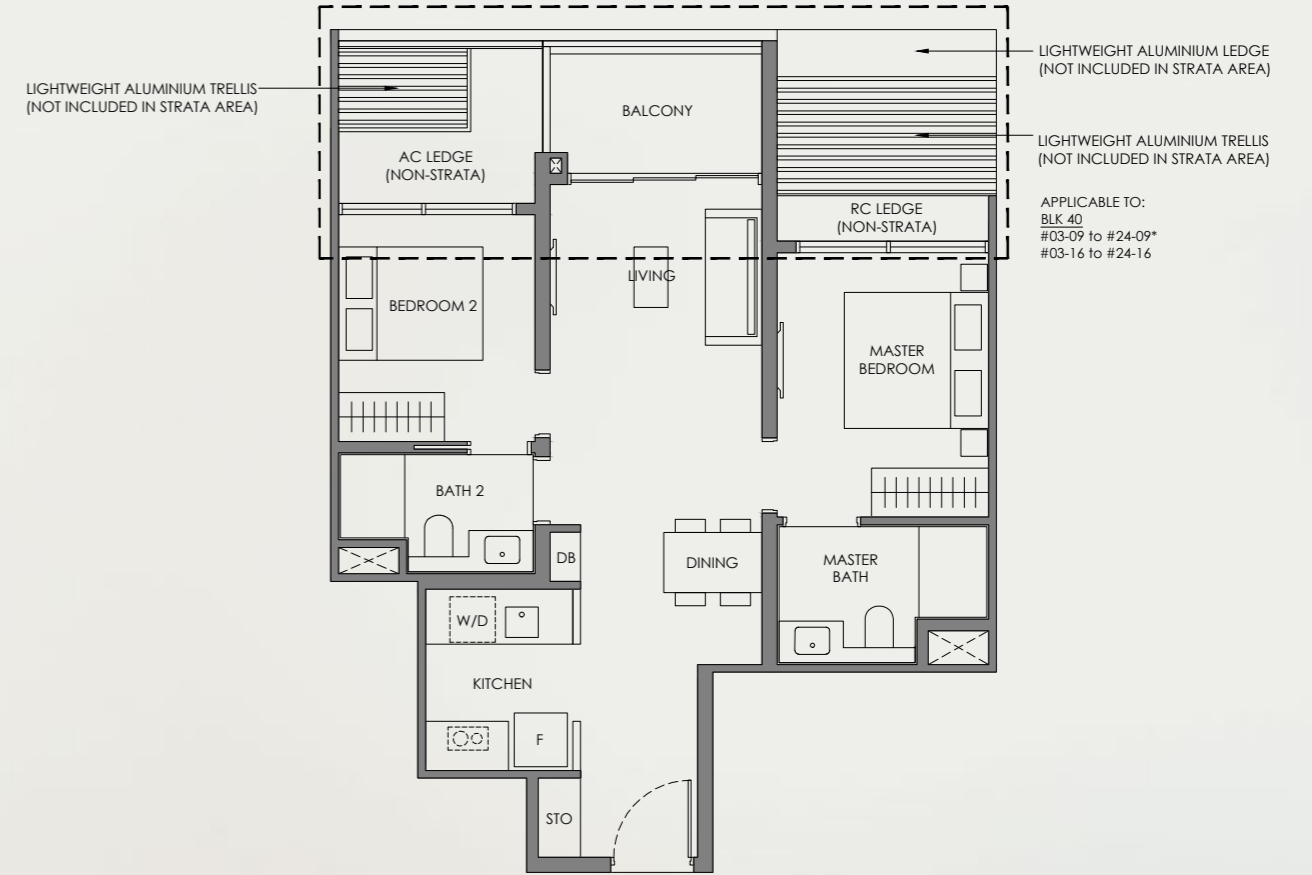
DISCLAIMER: Area includes balcony where applicable, and excludes among others, the air-conditioner (AC) ledge and RC - Reinforced Concrete Ledge. Please refer to the key plan for orientation. All floor plans are approximate measurements only and are subject to government re-survey. The balcony shall not be enclosed unless with the approved balcony screen. The cost of screen and installation shall be borne by the Purchaser.

2 Bedroom Premium

Type BP-1

65 sqm / 700 sqft

BLK 40
#02-09 to #24-09*
#02-16 to #24-16



Legend (Where Applicable):

- | | |
|-------------------------|----------------------------------|
| F - Fridge | WI - Wine Chiller |
| W/D - Washer cum Dryer | STO - Store |
| DB - Distribution Board | DM - Display Module |
| WC - Water Closet | WPD - Water Purifier & Dispenser |
| HS - Household Shelter | DW - Dish Washer |
| PR - Powder Room | *Mirror Image |

- Wall not allowed to be hacked or altered (including by way of drilling)
- Services void space (excluded from strata area)
- Rainwater downpipe shaft space (excluded from strata area)

DISCLAIMER: Area includes balcony where applicable, and excludes among others, the air-conditioner (AC) ledge and RC - Reinforced Concrete Ledge. Please refer to the key plan for orientation. All floor plans are approximate measurements only and are subject to government re-survey. The balcony shall not be enclosed unless with the approved balcony screen. The cost of screen and installation shall be borne by the Purchaser.

2 Bedroom Premium

Type BP-2
65 sqm / 700 sqft

BLK 40
#02-12 to #24-12

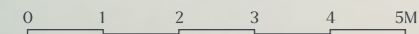
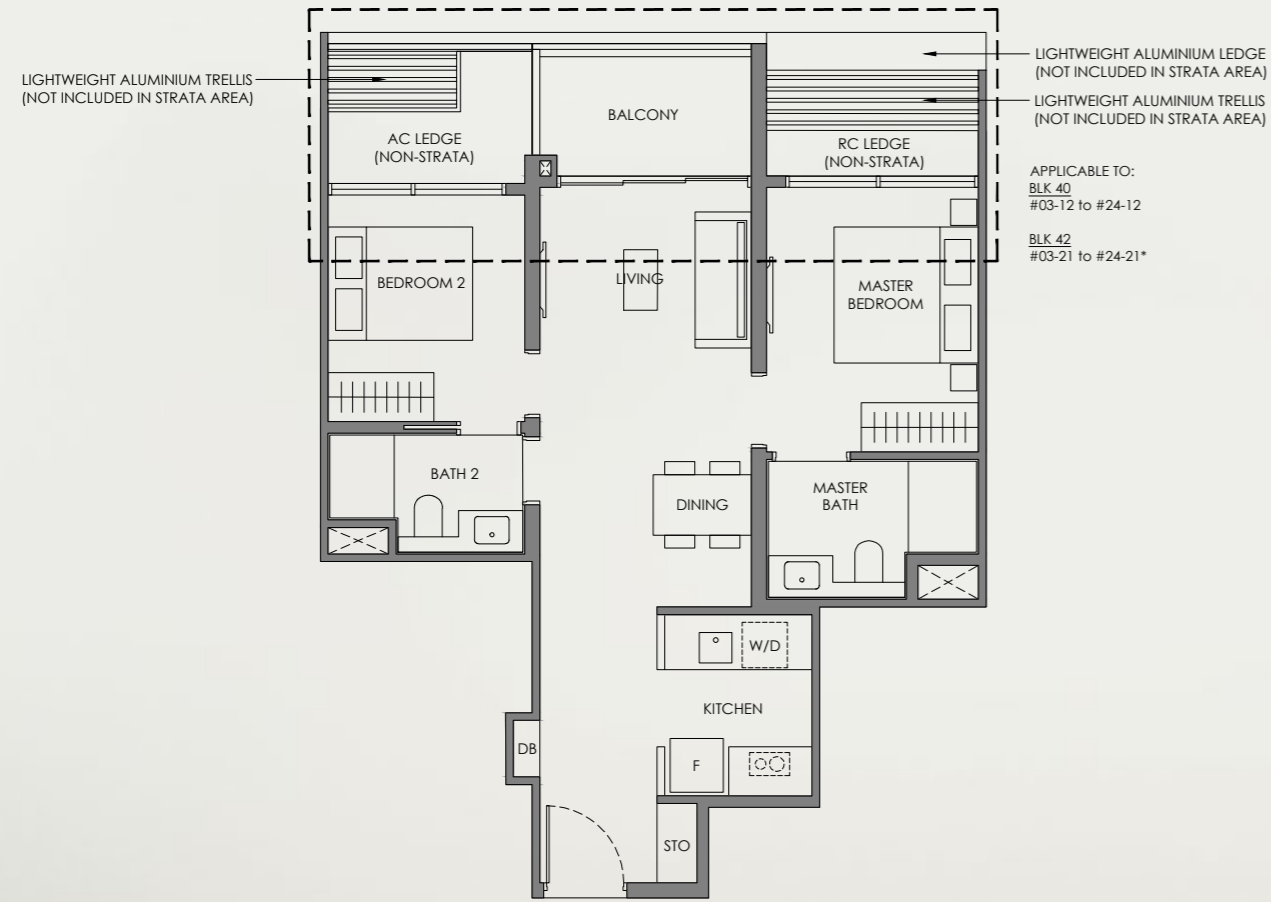
BLK 42
#02-21 to #24-21*



2 Bedroom + Study

Type BS
73 sqm / 786 sqft

BLK 38
#02-04 to #24-04
#02-05 to #24-05*

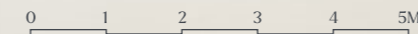
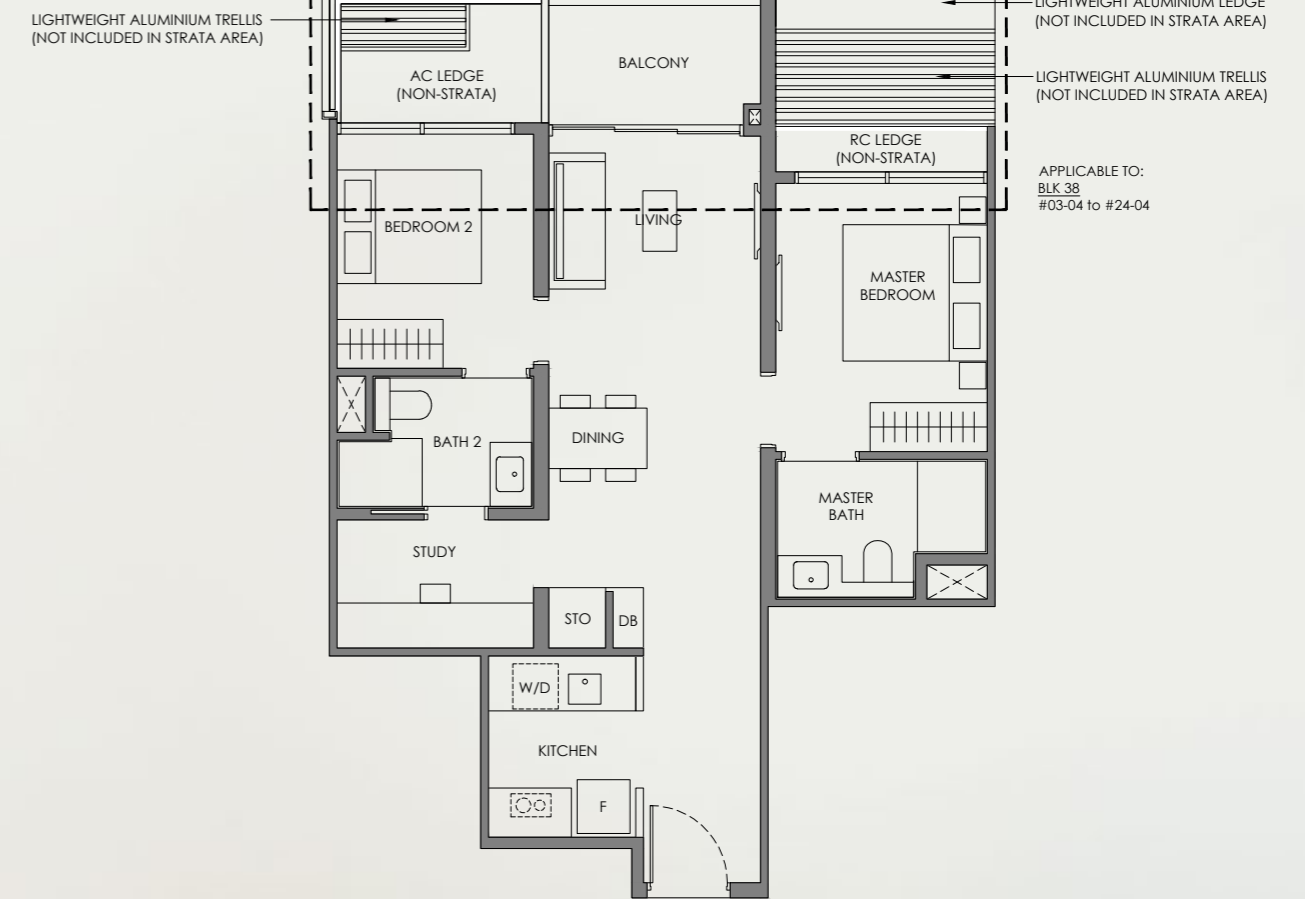


Legend (Where Applicable):

- | | |
|-------------------------|----------------------------------|
| F - Fridge | WI - Wine Chiller |
| W/D - Washer cum Dryer | STO - Store |
| DB - Distribution Board | DM - Display Module |
| WC - Water Closet | WPD - Water Purifier & Dispenser |
| HS - Household Shelter | DW - Dish Washer |
| PR - Powder Room | *Mirror Image |

- Wall not allowed to be hacked or altered (including by way of drilling)
- Services void space (excluded from strata area)
- Rainwater downpipe shaft space (excluded from strata area)

DISCLAIMER: Area includes balcony where applicable, and excludes among others, the air-conditioner (AC) ledge and RC - Reinforced Concrete Ledge. Please refer to the key plan for orientation. All floor plans are approximate measurements only and are subject to government re-survey. The balcony shall not be enclosed unless with the approved balcony screen. The cost of screen and installation shall be borne by the Purchaser.



Legend (Where Applicable):

- | | |
|-------------------------|----------------------------------|
| F - Fridge | WI - Wine Chiller |
| W/D - Washer cum Dryer | STO - Store |
| DB - Distribution Board | DM - Display Module |
| WC - Water Closet | WPD - Water Purifier & Dispenser |
| HS - Household Shelter | DW - Dish Washer |
| PR - Powder Room | *Mirror Image |

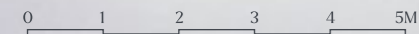
- Wall not allowed to be hacked or altered (including by way of drilling)
- Services void space (excluded from strata area)
- Rainwater downpipe shaft space (excluded from strata area)

DISCLAIMER: Area includes balcony where applicable, and excludes among others, the air-conditioner (AC) ledge and RC - Reinforced Concrete Ledge. Please refer to the key plan for orientation. All floor plans are approximate measurements only and are subject to government re-survey. The balcony shall not be enclosed unless with the approved balcony screen. The cost of screen and installation shall be borne by the Purchaser.

3 Bedroom Premium

Type CP-4
103 sqm / 1109 sqft

BLK 40
#02-10 to #24-10



Legend (Where Applicable):

- | | |
|-------------------------|----------------------------------|
| F - Fridge | WI - Wine Chiller |
| W/D - Washer cum Dryer | STO - Store |
| DB - Distribution Board | DM - Display Module |
| WC - Water Closet | WPD - Water Purifier & Dispenser |
| HS - Household Shelter | DW - Dish Washer |
| PR - Powder Room | *Mirror Image |

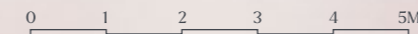
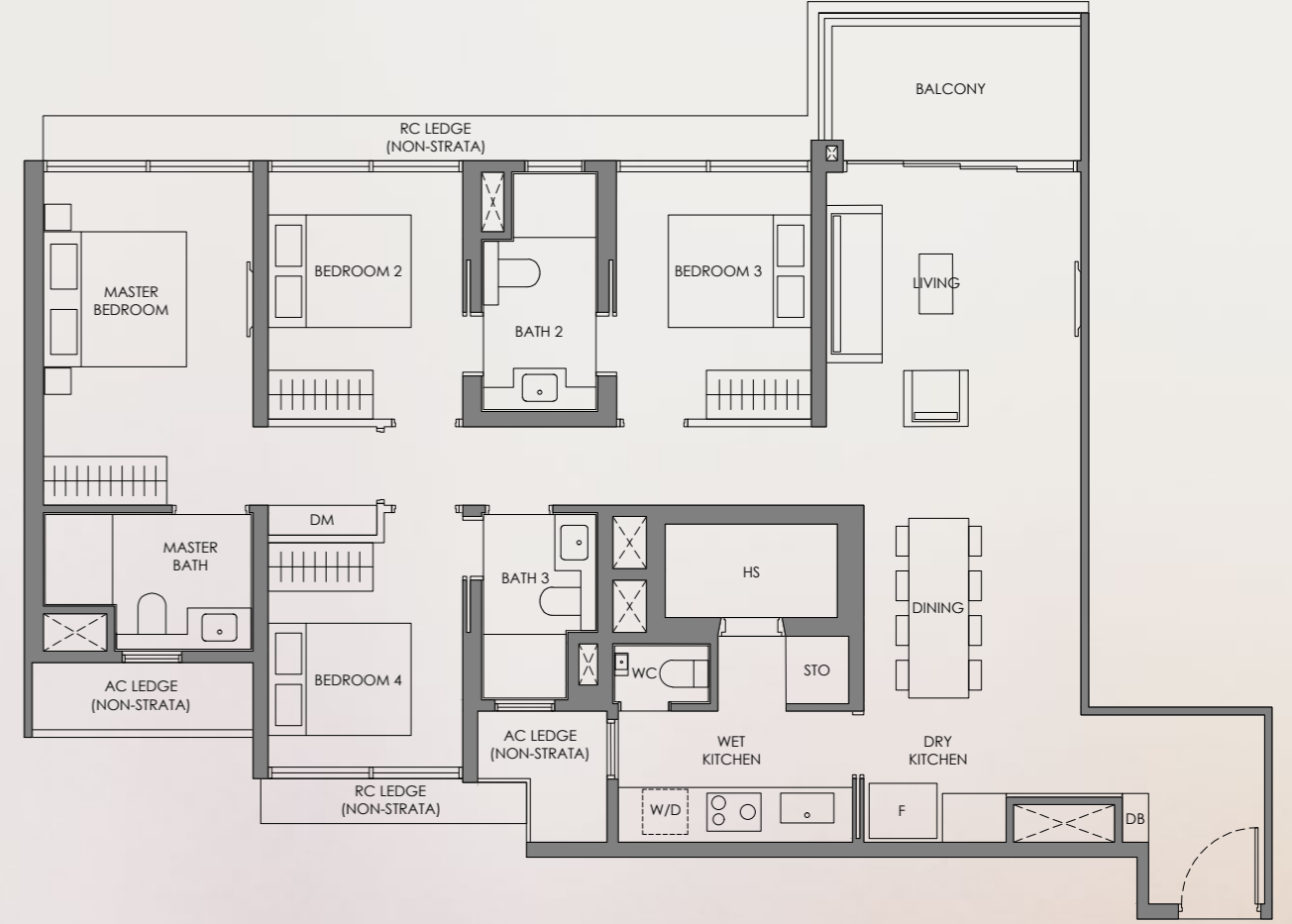
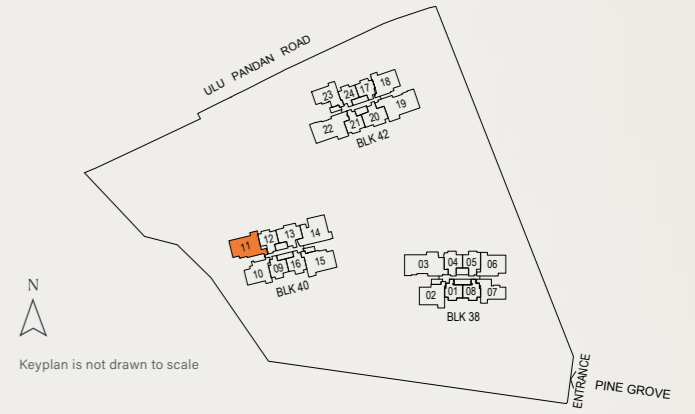
- Wall not allowed to be hacked or altered (including by way of drilling)
- Services void space (excluded from strata area)
- Rainwater downpipe shaft space (excluded from strata area)

DISCLAIMER: Area includes balcony where applicable, and excludes among others, the air-conditioner (AC) ledge and RC - Reinforced Concrete Ledge. Please refer to the key plan for orientation. All floor plans are approximate measurements only and are subject to government re-survey. The balcony shall not be enclosed unless with the approved balcony screen. The cost of screen and installation shall be borne by the Purchaser.

4 Bedroom

Type D-1
124 sqm / 1335 sqft

BLK 40
#02-11 to #24-11



Legend (Where Applicable):

- | | |
|-------------------------|----------------------------------|
| F - Fridge | WI - Wine Chiller |
| W/D - Washer cum Dryer | STO - Store |
| DB - Distribution Board | DM - Display Module |
| WC - Water Closet | WPD - Water Purifier & Dispenser |
| HS - Household Shelter | DW - Dish Washer |
| PR - Powder Room | *Mirror Image |

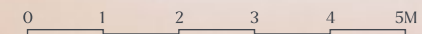
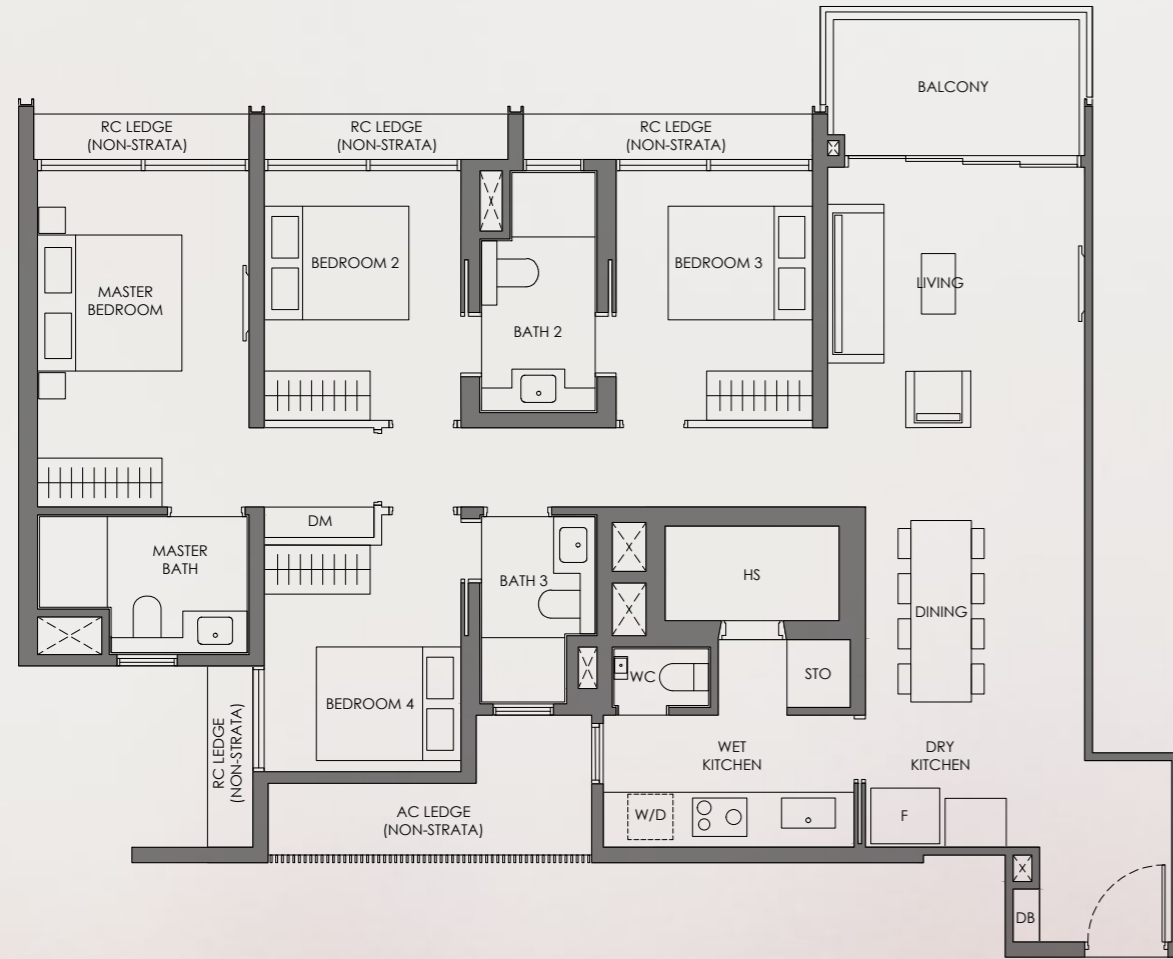
- Wall not allowed to be hacked or altered (including by way of drilling)
- Services void space (excluded from strata area)
- Rainwater downpipe shaft space (excluded from strata area)

DISCLAIMER: Area includes balcony where applicable, and excludes among others, the air-conditioner (AC) ledge and RC - Reinforced Concrete Ledge. Please refer to the key plan for orientation. All floor plans are approximate measurements only and are subject to government re-survey. The balcony shall not be enclosed unless with the approved balcony screen. The cost of screen and installation shall be borne by the Purchaser.

4 Bedroom

Type D-2
124 sqm / 1335 sqft

BLK 40
#02-15 to #24-15



- Legend (Where Applicable):**
- F - Fridge
 - W/D - Washer cum Dryer
 - DB - Distribution Board
 - WC - Water Closet
 - HS - Household Shelter
 - PR - Powder Room
 - WI - Wine Chiller
 - STO - Store
 - DM - Display Module
 - WPD - Water Purifier & Dispenser
 - DW - Dish Washer
 - *Mirror Image

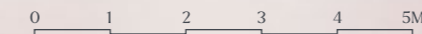
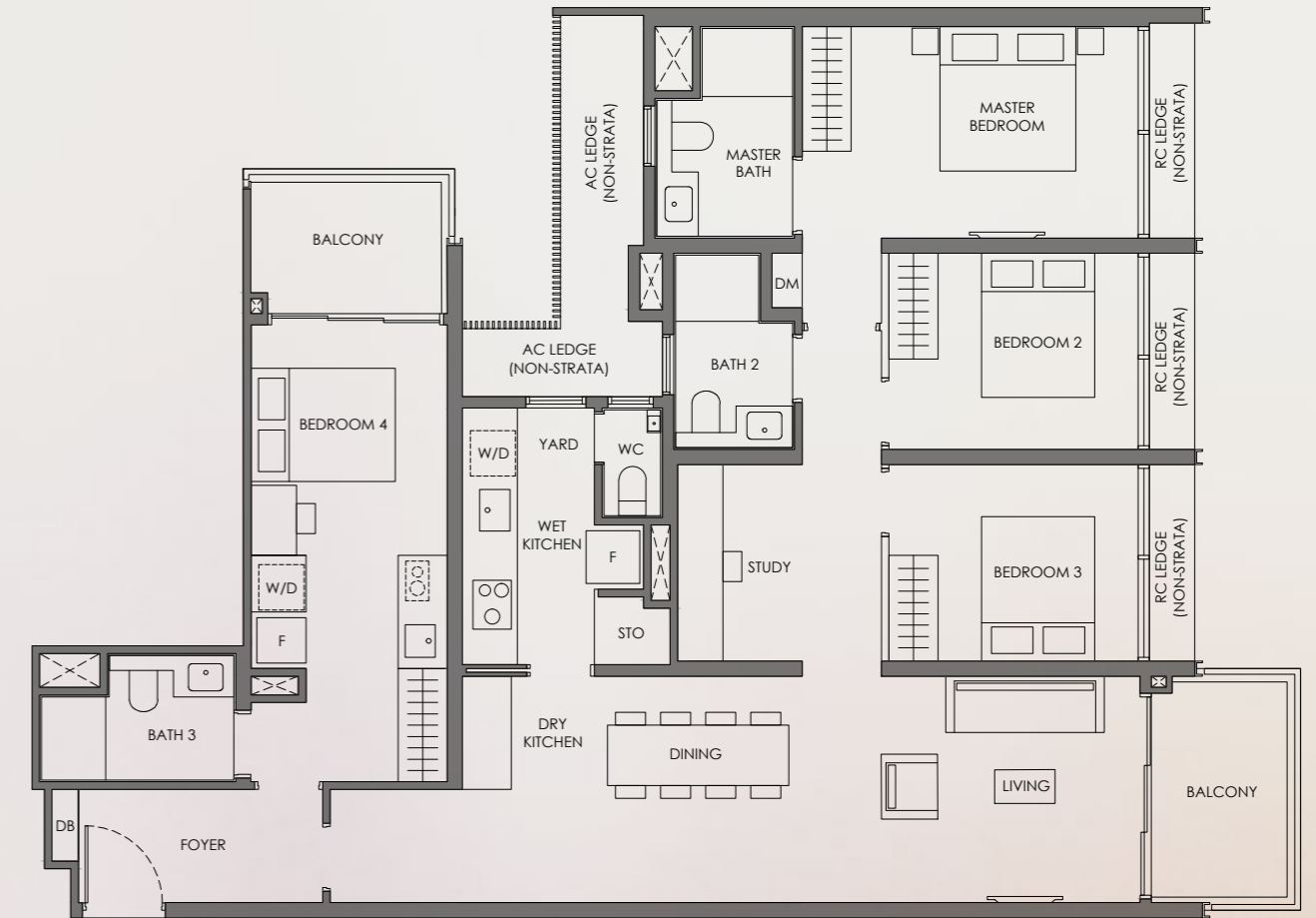
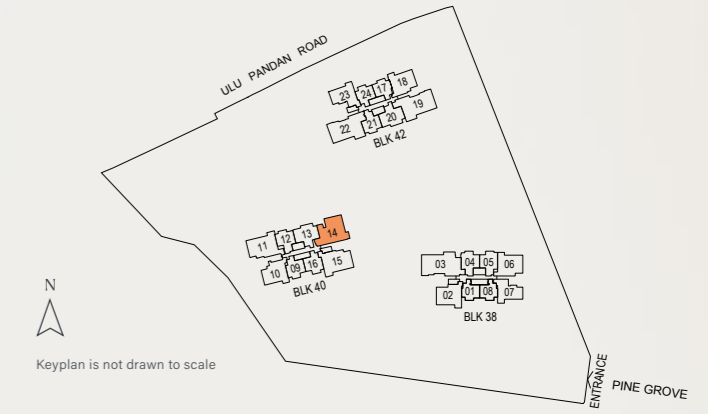
- Wall not allowed to be hacked or altered (including by way of drilling)
- Services void space (excluded from strata area)
- Rainwater downpipe shaft space (excluded from strata area)

DISCLAIMER: Area includes balcony where applicable, and excludes among others, the air-conditioner (AC) ledge and RC - Reinforced Concrete Ledge. Please refer to the key plan for orientation. All floor plans are approximate measurements only and are subject to government re-survey. The balcony shall not be enclosed unless with the approved balcony screen. The cost of screen and installation shall be borne by the Purchaser.

4 Bedroom Dual-Key

Type DK
136 sqm / 1464 sqft

BLK 40
#02-14 to #24-14



- Legend (Where Applicable):**
- F - Fridge
 - W/D - Washer cum Dryer
 - DB - Distribution Board
 - WC - Water Closet
 - HS - Household Shelter
 - PR - Powder Room
 - WI - Wine Chiller
 - STO - Store
 - DM - Display Module
 - WPD - Water Purifier & Dispenser
 - DW - Dish Washer
 - *Mirror Image

- Wall not allowed to be hacked or altered (including by way of drilling)
- Services void space (excluded from strata area)
- Rainwater downpipe shaft space (excluded from strata area)

DISCLAIMER: Area includes balcony where applicable, and excludes among others, the air-conditioner (AC) ledge and RC - Reinforced Concrete Ledge. Please refer to the key plan for orientation. All floor plans are approximate measurements only and are subject to government re-survey. The balcony shall not be enclosed unless with the approved balcony screen. The cost of screen and installation shall be borne by the Purchaser.

4 Bedroom Premium + Private Lift

Type DP-1
144 sqm / 1550 sqft

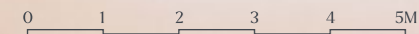
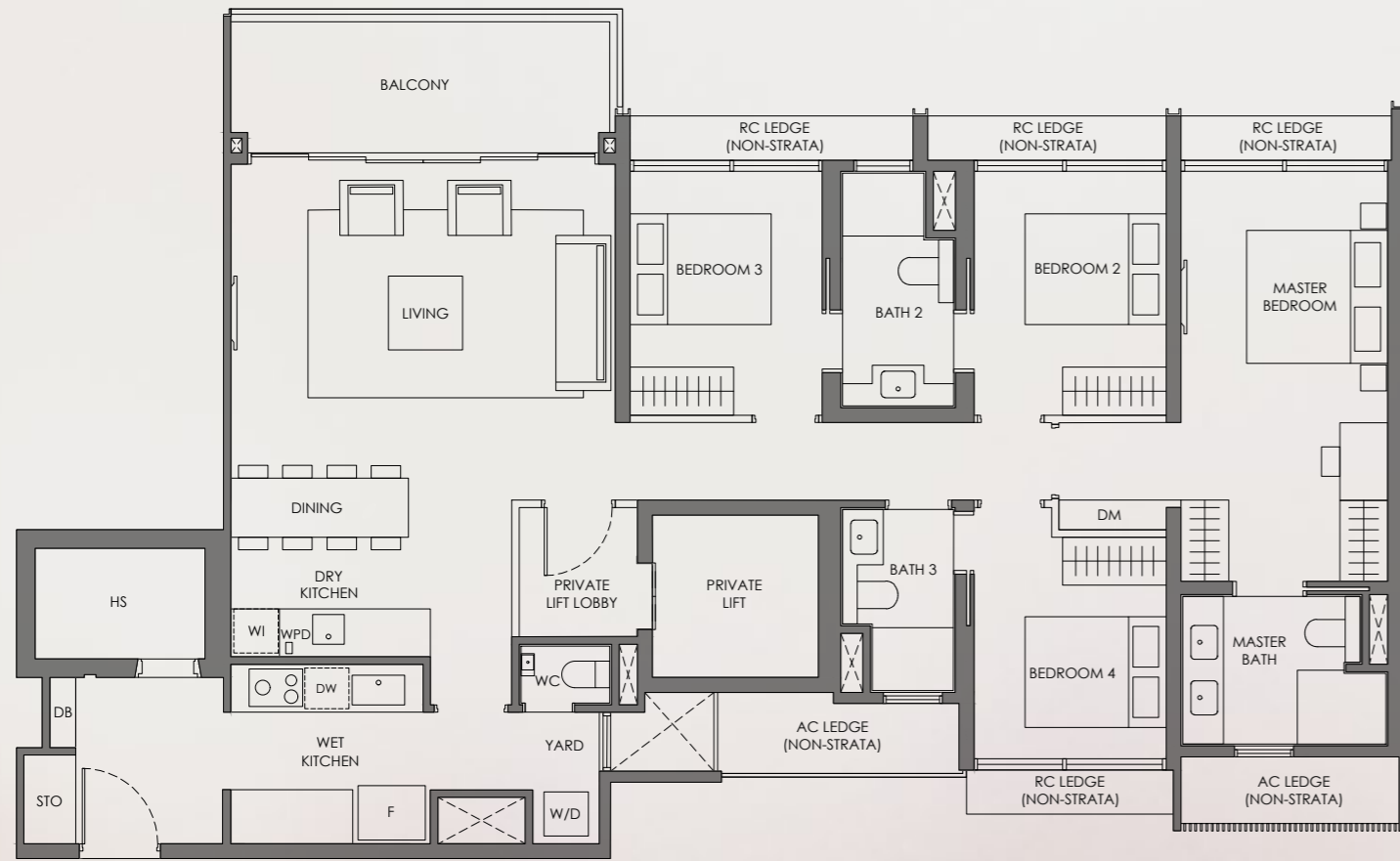
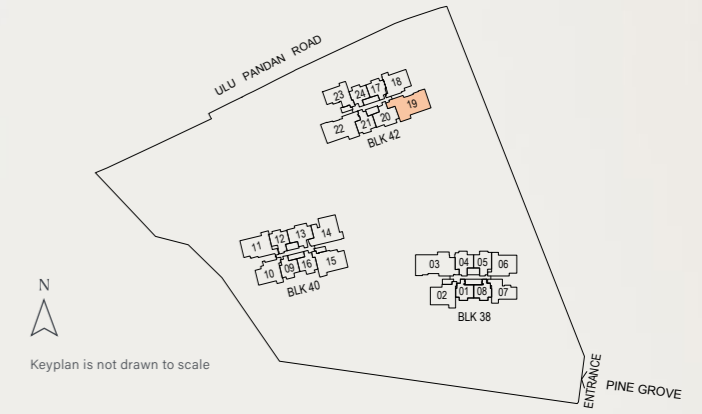
BLK 42
#02-22 to #24-22



4 Bedroom Premium + Private Lift

Type DP-2
144 sqm / 1550 sqft

BLK 42
#02-19 to #24-19

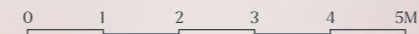
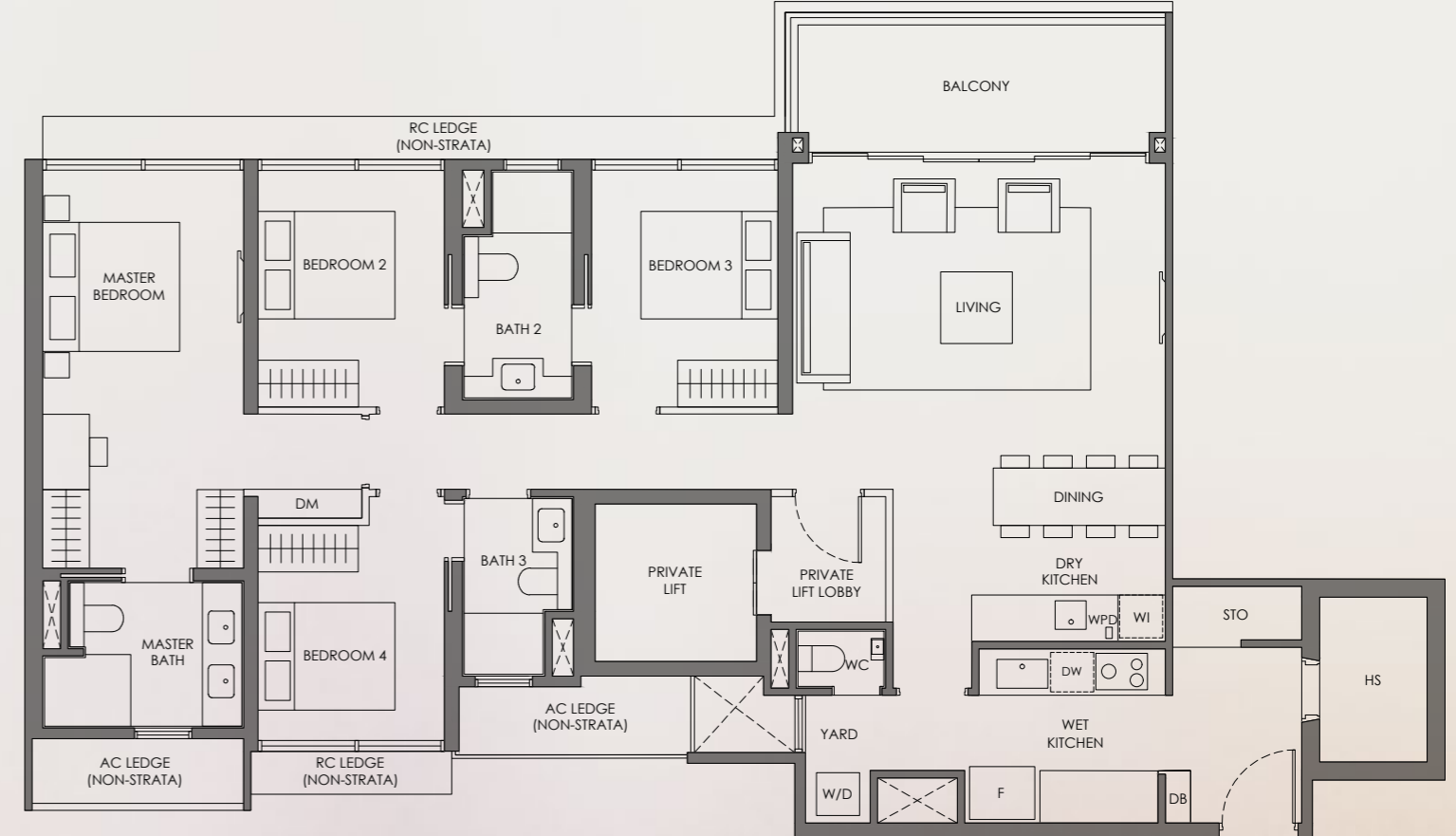


Legend (Where Applicable):

- F - Fridge
- W/D - Washer cum Dryer
- DB - Distribution Board
- WC - Water Closet
- HS - Household Shelter
- PR - Powder Room
- WI - Wine Chiller
- STO - Store
- DM - Display Module
- WPD - Water Purifier & Dispenser
- DW - Dish Washer
- *Mirror Image

- Wall not allowed to be hacked or altered (including by way of drilling)
- Services void space (excluded from strata area)
- Rainwater downpipe shaft space (excluded from strata area)

DISCLAIMER: Area includes balcony where applicable, and excludes among others, the air-conditioner (AC) ledge and RC - Reinforced Concrete Ledge. Please refer to the key plan for orientation. All floor plans are approximate measurements only and are subject to government re-survey. The balcony shall not be enclosed unless with the approved balcony screen. The cost of screen and installation shall be borne by the Purchaser.



Legend (Where Applicable):

- F - Fridge
- W/D - Washer cum Dryer
- DB - Distribution Board
- WC - Water Closet
- HS - Household Shelter
- PR - Powder Room
- WI - Wine Chiller
- STO - Store
- DM - Display Module
- WPD - Water Purifier & Dispenser
- DW - Dish Washer
- *Mirror Image

- Wall not allowed to be hacked or altered (including by way of drilling)
- Services void space (excluded from strata area)
- Rainwater downpipe shaft space (excluded from strata area)

DISCLAIMER: Area includes balcony where applicable, and excludes among others, the air-conditioner (AC) ledge and RC - Reinforced Concrete Ledge. Please refer to the key plan for orientation. All floor plans are approximate measurements only and are subject to government re-survey. The balcony shall not be enclosed unless with the approved balcony screen. The cost of screen and installation shall be borne by the Purchaser.

