

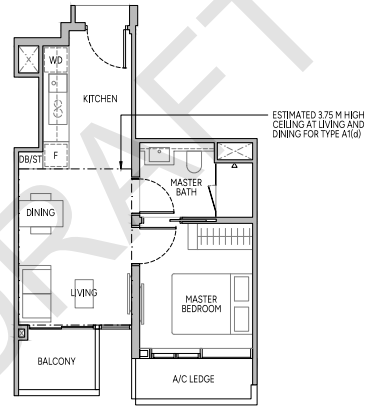
1-BEDROOM

TYPE A1
43 sq m | 463 sq ft

BLK 28
 #03-02 to #31-02

TYPE A1(d)
43 sq m | 463 sq ft

#32-02



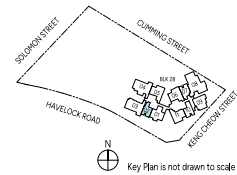
PLEASE REFER TO THE RESIDENTIAL STOREY KEY PLANS AND THE APPROVED BUILDING PLANS FOR THE POSITION OF THE LEDGES (WHICH INCLUDE BUT ARE NOT LIMITED TO ANY REINFORCED CONCRETE LEDGES, AND EXCLUDE AIR-CONDITIONER (A/C) LEDGE), WHICH DO NOT FORM PART OF THE STRATA AREA OF THE UNIT.



LEGEND (WHERE APPLICABLE)

- F Fridge DW Dishwasher CH Wine Chiller DB/ST Distribution Board/Storage
- WD Washer cum Dryer WD Washer and Dryer WC Water Closet A/C Air-Conditioner
- Wall not allowed to be hacked or altered Services void space (excluded from strata area)

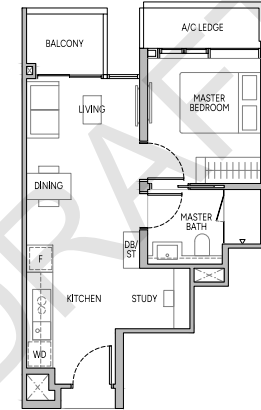
Area includes air-conditioner (A/C) ledge and balcony where applicable, and excludes among others, the ledges (as described in the approved building plans, which include but are not limited to any reinforced concrete ledges, and include air-conditioner (A/C) ledges). The plans are subject to change and may be required by relevant authorities. All floor plans are based on existing floor levels. The floor level is indicated where applicable with the approved building plans, where applicable. Refer to the approved building plans for more information. Please refer to the strata plan for the location of the ledges, including any information regarding the strata plan. The strata plan is available on the strata plan website. The Sale and Purchase Agreement contains the entire agreement between the developer and the purchaser and supersedes and cancels in all respects all previous representations, agreements, general, particular or statements of intention, whether written or oral made by the developer and/or the developer's agent, which are not enclosed in the Sale and Purchase Agreement.



1-BEDROOM + STUDY

TYPE A2S
47 sq m | 506 sq ft

BLK 28
 #03-07 to #37-07



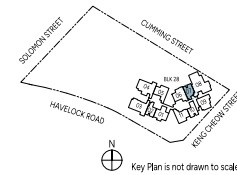
PLEASE REFER TO THE RESIDENTIAL STOREY KEY PLANS AND THE APPROVED BUILDING PLANS FOR THE POSITION OF THE LEDGES (WHICH INCLUDE BUT ARE NOT LIMITED TO ANY REINFORCED CONCRETE LEDGES, AND EXCLUDE AIR-CONDITIONER (A/C) LEDGE), WHICH DO NOT FORM PART OF THE STRATA AREA OF THE UNIT.



LEGEND (WHERE APPLICABLE)

- F Fridge DW Dishwasher CH Wine Chiller DB/ST Distribution Board/Storage
- WD Washer cum Dryer WD Washer and Dryer WC Water Closet A/C Air-Conditioner
- Wall not allowed to be hacked or altered Services void space (excluded from strata area)

Area includes air-conditioner (A/C) ledge and balcony where applicable, and excludes among others, the ledges (as described in the approved building plans, which include but are not limited to any reinforced concrete ledges, and include air-conditioner (A/C) ledges). The plans are subject to change and may be required by relevant authorities. All floor plans are based on existing floor levels. The floor level is indicated where applicable with the approved building plans, where applicable. Refer to the approved building plans for more information. Please refer to the strata plan for the location of the ledges, including any information regarding the strata plan. The strata plan is available on the strata plan website. The Sale and Purchase Agreement contains the entire agreement between the developer and the purchaser and supersedes and cancels in all respects all previous representations, agreements, general, particular or statements of intention, whether written or oral made by the developer and/or the developer's agent, which are not enclosed in the Sale and Purchase Agreement.



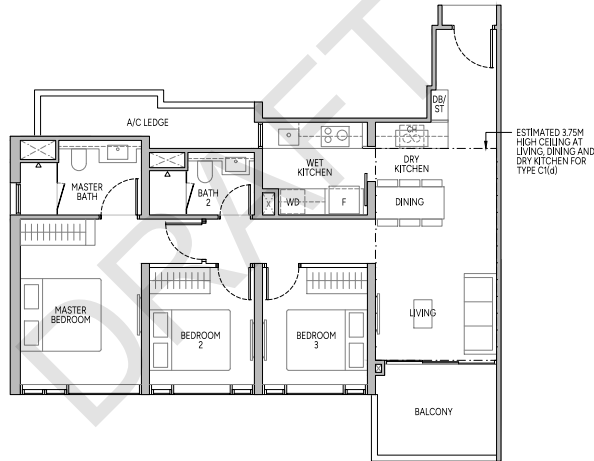
3-BEDROOM

TYPE C1
92 sq m | 990 sq ft

BLK 28
#05-03 to #31-03

TYPE C1(d)
92 sq m | 990 sq ft

#32-03



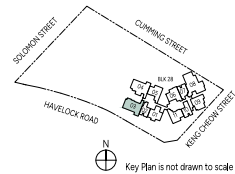
PLEASE REFER TO THE RESIDENTIAL STOREY KEY PLANS AND THE APPROVED BUILDING PLANS FOR THE POSITION OF THE LEDGES (WHICH INCLUDE BUT ARE NOT LIMITED TO ANY REINFORCED CONCRETE LEDGES, AND EXCLUDE AIR-CONDITIONER (A/C) LEDGE), WHICH DO NOT FORM PART OF THE STRATA AREA OF THE UNIT.



LEGEND (WHERE APPLICABLE)

- F Fridge
- WD Washer cum Dryer
- CH Wine Chiller
- WC Water Closet
- DB/ST Distribution Board/Storage
- DW Dishwasher
- WD Washer and Dryer
- A/C Air-Conditioner
- Services void space (excluded from strata area)

Area includes air-conditioner (A/C) ledge and balcony where applicable, and excludes among others, the ledges (as described in the approved building plans, which include but are not limited to any reinforced concrete ledges, and exclude air-conditioner (A/C) ledge). The plan is subject to change and is not intended to be used as a contract document. Please refer to the approved building plans for the position of the ledges (which include but are not limited to any reinforced concrete ledges, and exclude air-conditioner (A/C) ledge), which do not form part of the strata area of the unit. The plan is not drawn to scale. The plan and Purchase Agreement contain the entire agreement between the developer and the purchaser and supersede and cancel in all respects all previous representations, agreements, general, particular or statements of intention, whether written or oral made by the developer and/or the developer's agent, which are not enclosed in the Sale and Purchase Agreement.



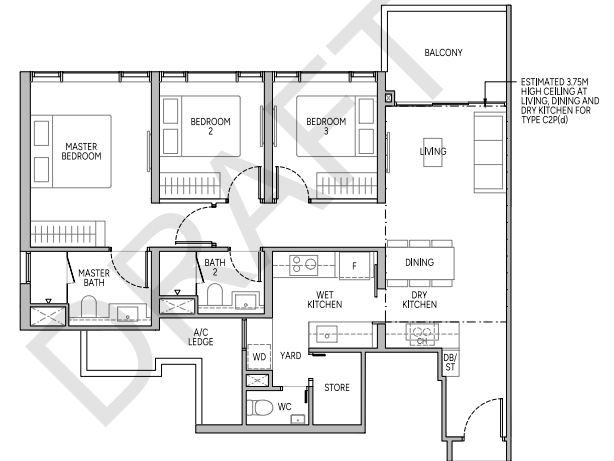
3-BEDROOM PREMIUM

TYPE C2P
99 sq m | 1066 sq ft

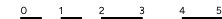
BLK 28
#04-04 to #31-04

TYPE C2P(d)
99 sq m | 1066 sq ft

#32-04



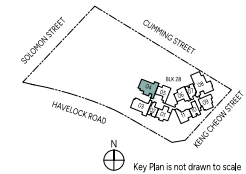
PLEASE REFER TO THE RESIDENTIAL STOREY KEY PLANS AND THE APPROVED BUILDING PLANS FOR THE POSITION OF THE LEDGES (WHICH INCLUDE BUT ARE NOT LIMITED TO ANY REINFORCED CONCRETE LEDGES, AND EXCLUDE AIR-CONDITIONER (A/C) LEDGE), WHICH DO NOT FORM PART OF THE STRATA AREA OF THE UNIT.



LEGEND (WHERE APPLICABLE)

- F Fridge
- WD Washer cum Dryer
- CH Wine Chiller
- WC Water Closet
- DB/ST Distribution Board/Storage
- DW Dishwasher
- WD Washer and Dryer
- A/C Air-Conditioner
- Services void space (excluded from strata area)

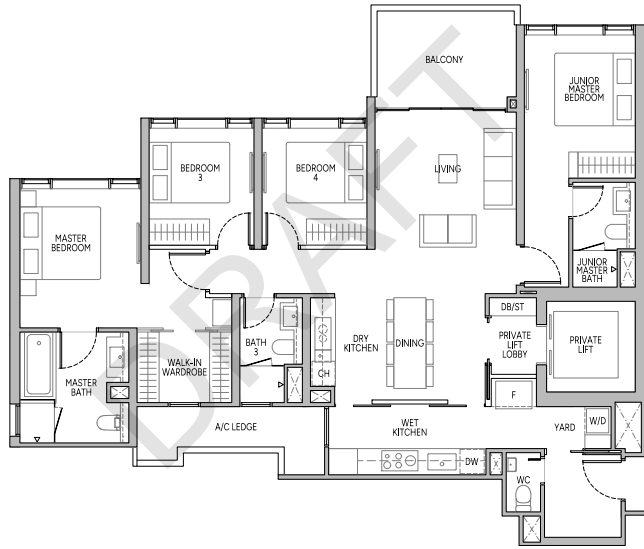
Area includes air-conditioner (A/C) ledge and balcony where applicable, and excludes among others, the ledges (as described in the approved building plans, which include but are not limited to any reinforced concrete ledges, and exclude air-conditioner (A/C) ledge). The plan is subject to change and is not intended to be used as a contract document. Please refer to the approved building plans for the position of the ledges (which include but are not limited to any reinforced concrete ledges, and exclude air-conditioner (A/C) ledge), which do not form part of the strata area of the unit. The plan is not drawn to scale. The plan and Purchase Agreement contain the entire agreement between the developer and the purchaser and supersede and cancel in all respects all previous representations, agreements, general, particular or statements of intention, whether written or oral made by the developer and/or the developer's agent, which are not enclosed in the Sale and Purchase Agreement.



4-BEDROOM PREMIUM

TYPE D1P
141 sq m | 1518 sq ft

BLK 28
#03-08 to #37-08



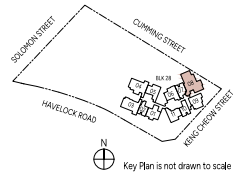
PLEASE REFER TO THE RESIDENTIAL STOREY KEY PLANS AND THE APPROVED BUILDING PLAN FOR THE POSITION OF THE LEDGES (WHICH INCLUDE BUT ARE NOT LIMITED TO ANY REINFORCED CONCRETE LEDGES, AND EXCLUDE AIR-CONDITIONER (A/C) LEDGE), WHICH DO NOT FORM PART OF THE STRATA AREA OF THE UNIT.

0 1 2 3 4 5M

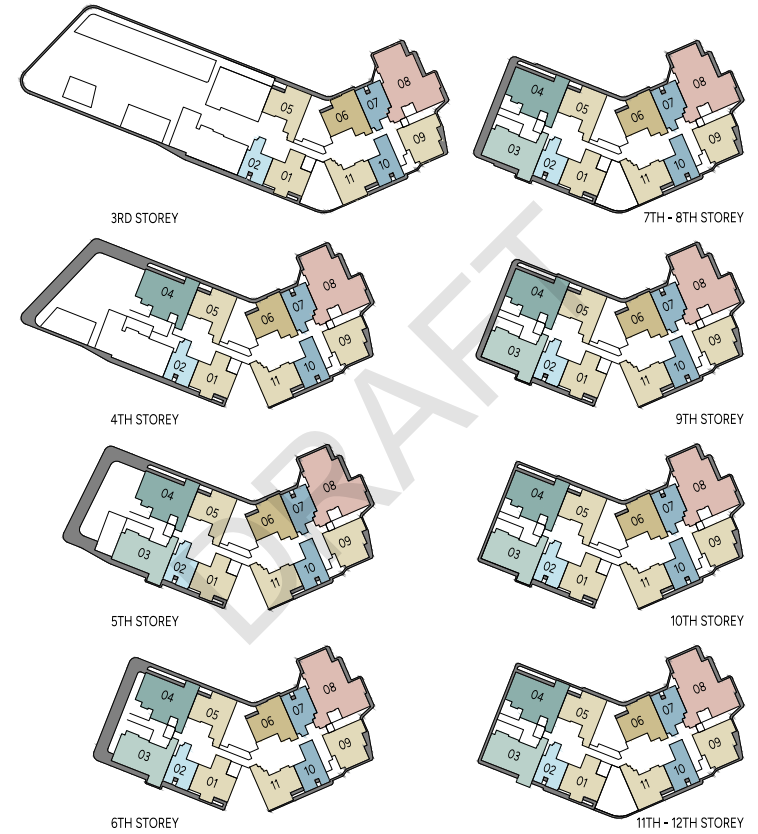
LEGEND (WHERE APPLICABLE)

- F Fridge
- WD Washer cum Dryer
- W/D Washer and Dryer
- WAI Wall not allowed to be hacked or altered
- DW Dishwasher
- WC Wine Chiller
- WC Water Closet
- DB/ST Distribution Board/Storage
- A/C Air-Conditioner
- Services void space (excluded from strata area)

Area includes air-conditioner (A/C) ledge and balcony where applicable, and excludes among others, the ledges (as described in the approved building plans, which include but are not limited to any reinforced concrete ledges, and exclude air-conditioner (A/C) ledge). The plans are subject to change, and are not to be taken as a factual representation of the actual units. All floor plans are based on the approved building plans. The floor plan is not to be used for any other purpose, and is not to be used for any other purpose. Please refer to the approved building plans for the actual unit boundaries. The floor plan is not to be used for any other purpose, and is not to be used for any other purpose. Please refer to the approved building plans for the actual unit boundaries. The floor plan is not to be used for any other purpose, and is not to be used for any other purpose. Please refer to the approved building plans for the actual unit boundaries.



RESIDENTIAL STOREY KEY PLANS

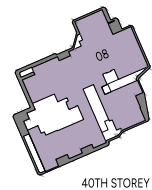
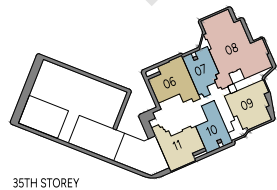
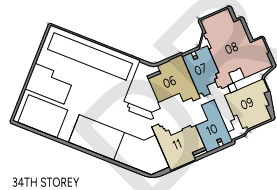
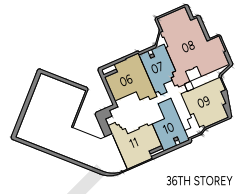
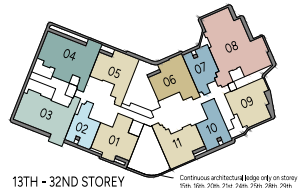


LEGEND

- 1 - BEDROOM
- 2 - BEDROOM
- 3 - BEDROOM
- 4 - BEDROOM PREMIUM
- 1 - BEDROOM + STUDY
- 2 - BEDROOM + STUDY
- 3 - BEDROOM + PREMIUM
- SKY SUITE
- PENTHOUSE
- LEDGE

Key plans are not drawn to scale. The shading and outlines of the key plans are for illustrative purposes only. The boundary lines of the units set out here are not to be taken as a factual representation of the actual units. Kindly refer to the approved building plans for the actual unit boundaries. THE LEDGES (WHICH INCLUDE BUT ARE NOT LIMITED TO ANY REINFORCED CONCRETE LEDGES, AND EXCLUDE AIR-CONDITIONER (A/C) LEDGE), DO NOT FORM PART OF THE STRATA AREA OF THE UNIT.

RESIDENTIAL STOREY KEY PLANS



LEGEND

- 1 - BEDROOM
- 2 - BEDROOM
- 3 - BEDROOM
- 4 - BEDROOM PREMIUM
- PENTHOUSE
- 1 - BEDROOM + STUDY
- 2 - BEDROOM + STUDY
- 3 - BEDROOM + PREMIUM
- SKY SUITE
- LEDGE

Key plans are not drawn to scale. The shading and outlines of the key plans are for illustrative purposes only. The boundary lines of the units set out here are not to be taken as a factual representation of the actual units. Kindly refer to the approved building plans for the actual unit outline/boundary lines. THE LEDGES (WHICH INCLUDE BUT ARE NOT LIMITED TO ANY REINFORCED CONCRETE LEDGES, AND EXCLUDE AIR-CONDITIONER (A/C) LEDGE), DO NOT FORM PART OF THE STRATA AREA OF THE UNIT.